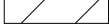


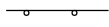
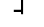

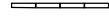

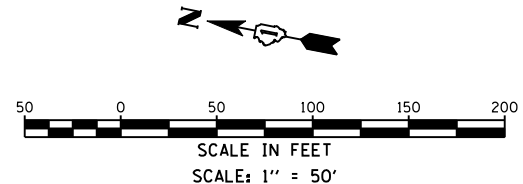
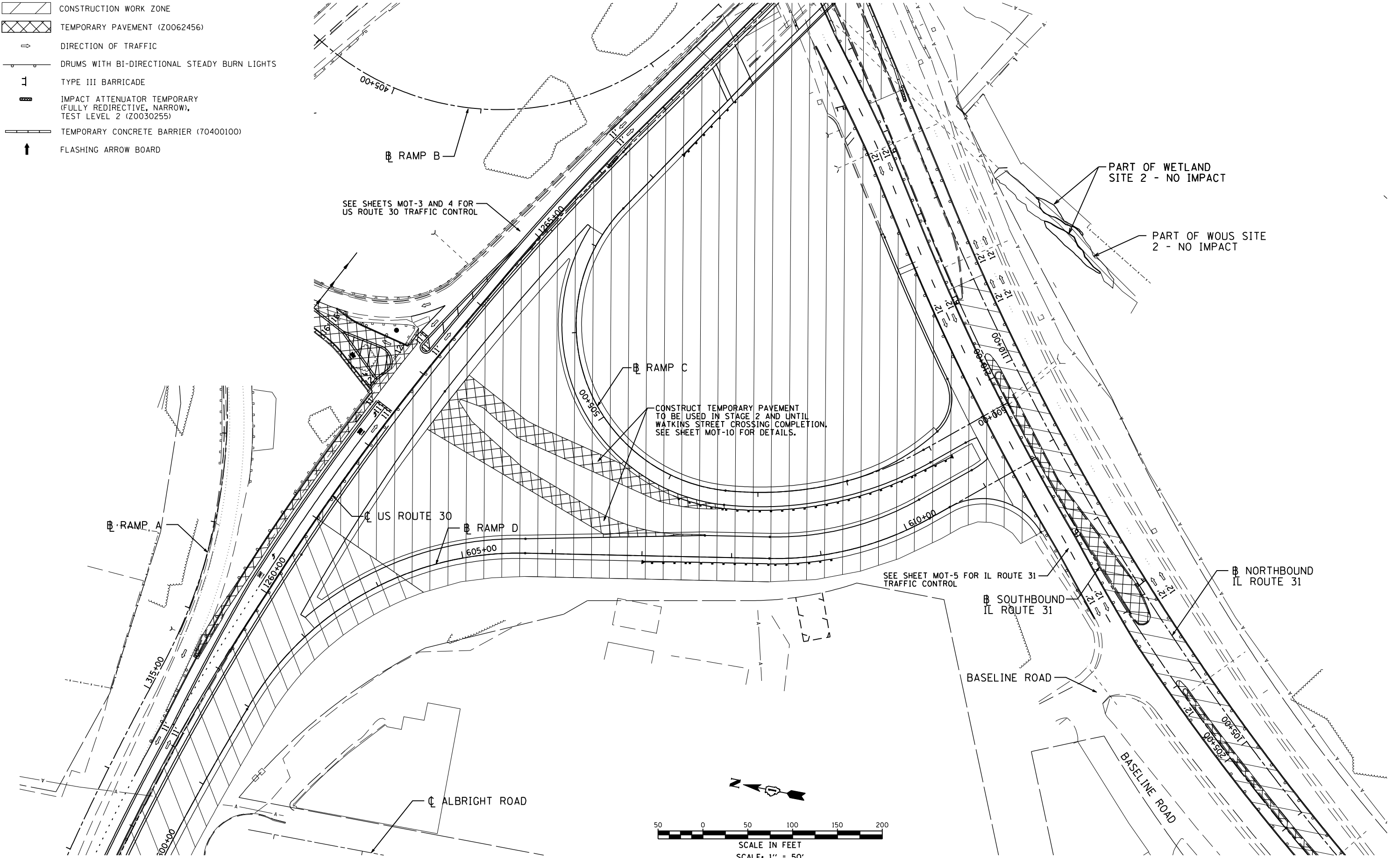


LEGEND

-  CONSTRUCTION WORK ZONE
-  TEMPORARY PAVEMENT (Z0062456)
-  DIRECTION OF TRAFFIC
-  DRUMS WITH BI-DIRECTIONAL STEADY BURN LIGHTS
-  TYPE III BARRICADE
-  IMPACT ATTENUATOR TEMPORARY (FULLY REDIRECTIVE, NARROW), TEST LEVEL 2 (Z0030255)
-  TEMPORARY CONCRETE BARRIER (70400100)
-  FLASHING ARROW BOARD

STAGE I



P:\jobs\2010\201030033\cd\site\vgd\00\0160133-sht+stt-mot+sl-05.dgn
 8/8/2012 2:02:22 PM

| | | |
|------------------------------|-------------------|-----------|
| USER NAME = 1654 | DESIGNED - JWB | REVISED - |
| | DRAWN - JWB | REVISED - |
| PLOT SCALE = 100.0000' / IN. | CHECKED - RS | REVISED - |
| PLOT DATE = 8/8/2012 | DATE - 06/15/2012 | REVISED - |

**STATE OF ILLINOIS
DEPARTMENT OF TRANSPORTATION**

**U.S. ROUTE 30 AT IL ROUTE 31
SUGGESTED STAGING AND TRAFFIC CONTROL - STAGE 1
RAMP C AND RAMP D**

SCALE: 1"=50' SHEET NO. MOT-7 OF 27

(RAMP C) STA. 500+00 TO STA. 507+52
(RAMP D) STA. 600+00 TO STA. 609+96

| F.A.P. RTE. | SECTION | COUNTY | TOTAL SHEETS | SHEET NO. |
|---------------------------|------------------|--------|--------------------|-----------|
| 349 | (10 & 11 VB) R-3 | * | 507 | 99 |
| * KANE AND KENDALL | | | CONTRACT NO. 60133 | |
| ILLINOIS FED. AID PROJECT | | | | |