


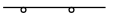






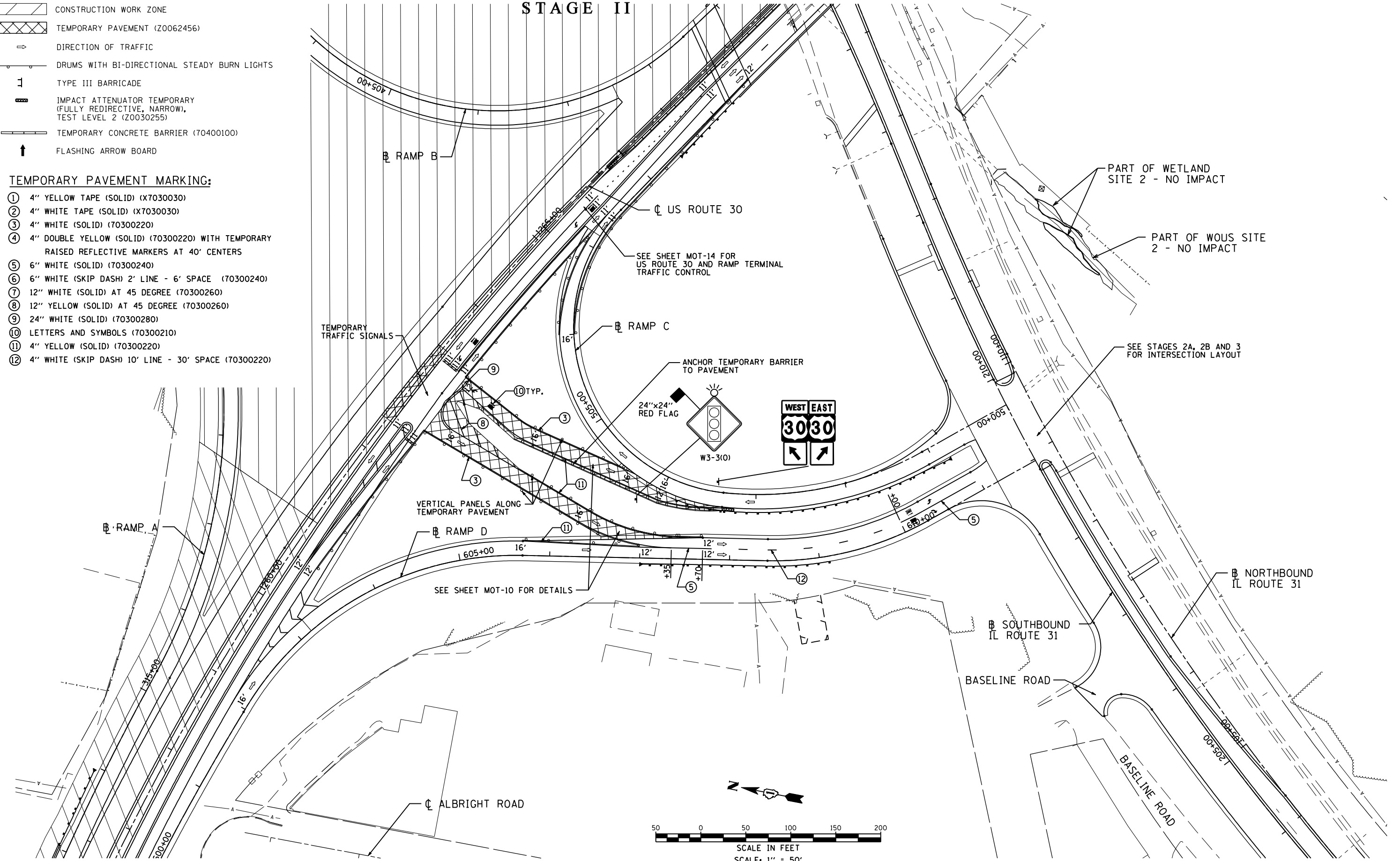
LEGEND

-  CONSTRUCTION WORK ZONE
-  TEMPORARY PAVEMENT (Z0062456)
-  DIRECTION OF TRAFFIC
-  DRUMS WITH BI-DIRECTIONAL STEADY BURN LIGHTS
-  TYPE III BARRICADE
-  IMPACT ATTENUATOR TEMPORARY (FULLY REDIRECTIVE, NARROW), TEST LEVEL 2 (Z0030255)
-  TEMPORARY CONCRETE BARRIER (70400100)
-  FLASHING ARROW BOARD

TEMPORARY PAVEMENT MARKING:

- ① 4" YELLOW TAPE (SOLID) (X7030030)
- ② 4" WHITE TAPE (SOLID) (X7030030)
- ③ 4" WHITE (SOLID) (70300220)
- ④ 4" DOUBLE YELLOW (SOLID) (70300220) WITH TEMPORARY RAISED REFLECTIVE MARKERS AT 40' CENTERS
- ⑤ 6" WHITE (SOLID) (70300240)
- ⑥ 6" WHITE (SKIP DASH) 2' LINE - 6' SPACE (70300240)
- ⑦ 12" WHITE (SOLID) AT 45 DEGREE (70300260)
- ⑧ 12" YELLOW (SOLID) AT 45 DEGREE (70300260)
- ⑨ 24" WHITE (SOLID) (70300280)
- ⑩ LETTERS AND SYMBOLS (70300210)
- ⑪ 4" YELLOW (SOLID) (70300220)
- ⑫ 4" WHITE (SKIP DASH) 10' LINE - 30' SPACE (70300220)

STAGE II



P:\jobs\2010\201030033\cd\site\vgd\00\060133-sht+mot+52-04.dgn
 8/8/2012 2:02:52 PM

USER NAME = 1654	DESIGNED - JWB	REVISED -
	DRAWN - JWB	REVISED -
PLOT SCALE = 100.0000' / IN.	CHECKED - RS	REVISED -
PLOT DATE = 8/8/2012	DATE - 06/15/2012	REVISED -

**STATE OF ILLINOIS
DEPARTMENT OF TRANSPORTATION**

**U.S. ROUTE 30 AT IL ROUTE 31
SUGGESTED STAGING AND TRAFFIC CONTROL - STAGE 2
RAMP C AND RAMP D**

SCALE: 1"=50' SHEET NO. MOT-16 OF 27 (RAMP C) STA. 500+00 TO STA. 507+52 (RAMP D) STA. 600+00 TO STA. 609+96

F.A.P. RTE. 349	SECTION (10 & 11 VB) R-3	COUNTY *	TOTAL SHEETS 507	SHEET NO. 103
* KANE AND KENDALL			CONTRACT NO. 60133	
ILLINOIS FED. AID PROJECT				