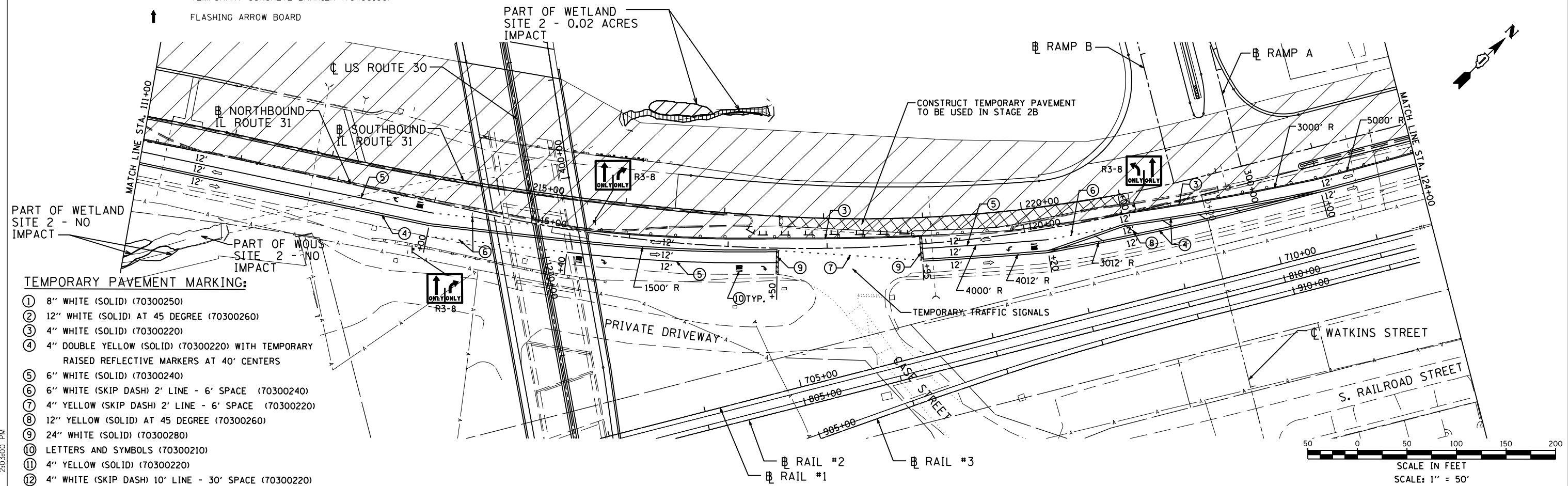
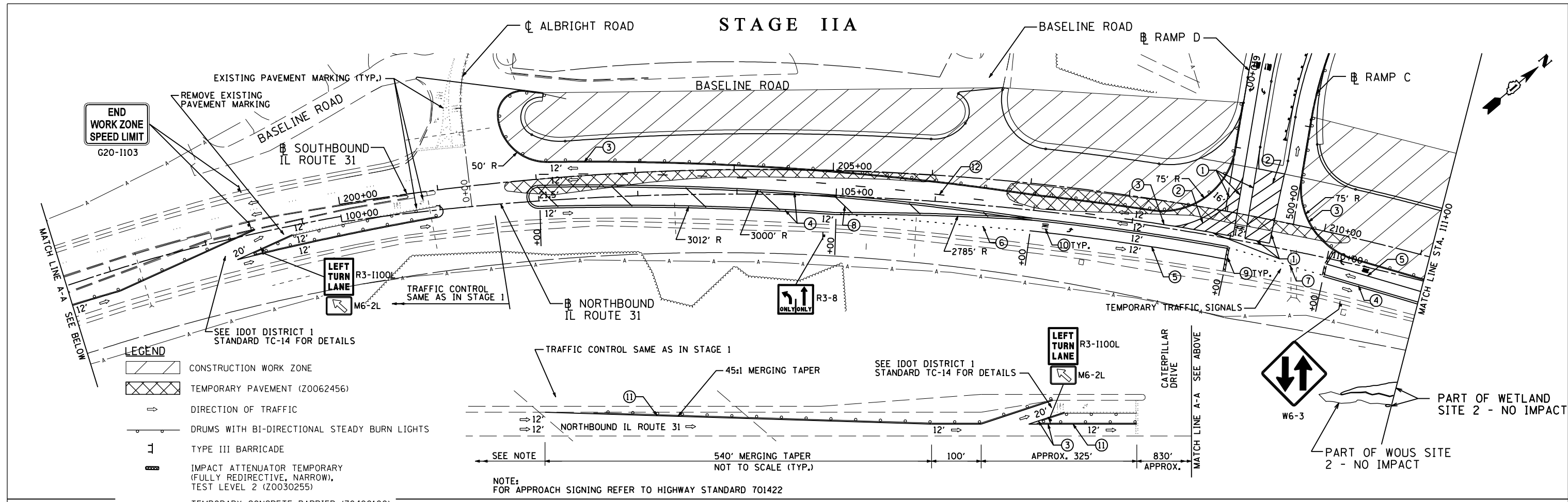


STAGE IIA



**STATE OF ILLINOIS
DEPARTMENT OF TRANSPORTATION**

**U.S. ROUTE 30 AT IL ROUTE 31
SUGGESTED STAGING AND TRAFFIC CONTROL - STAGE 2A
IL ROUTE 31**

F.A.P. RTE.	SECTION	COUNTY	TOTAL SHEETS	SHEET NO.
349	(10 & 11 VB) R-3		507	105
KANE AND KENDALL			CONTRACT NO. 60133	
ILLINOIS FED. AID PROJECT				

USER NAME = 1654	DESIGNED - JWB	REVISED -
	DRAWN - JWB	REVISED -
PLOT SCALE = 100.0000' / IN.	CHECKED - RS	REVISED -
PLOT DATE = 8/8/2012	DATE - 06/15/2012	REVISED -

SCALE: 1"=50' SHEET NO. MOT-18 OF 27 STA. 100+00 TO STA. 124+00

P:\Jobs\2010\201030033\cd\site\ogm\00\060133-sht+mot+sta-01.dgn
 8/8/2012 2:03:00 PM