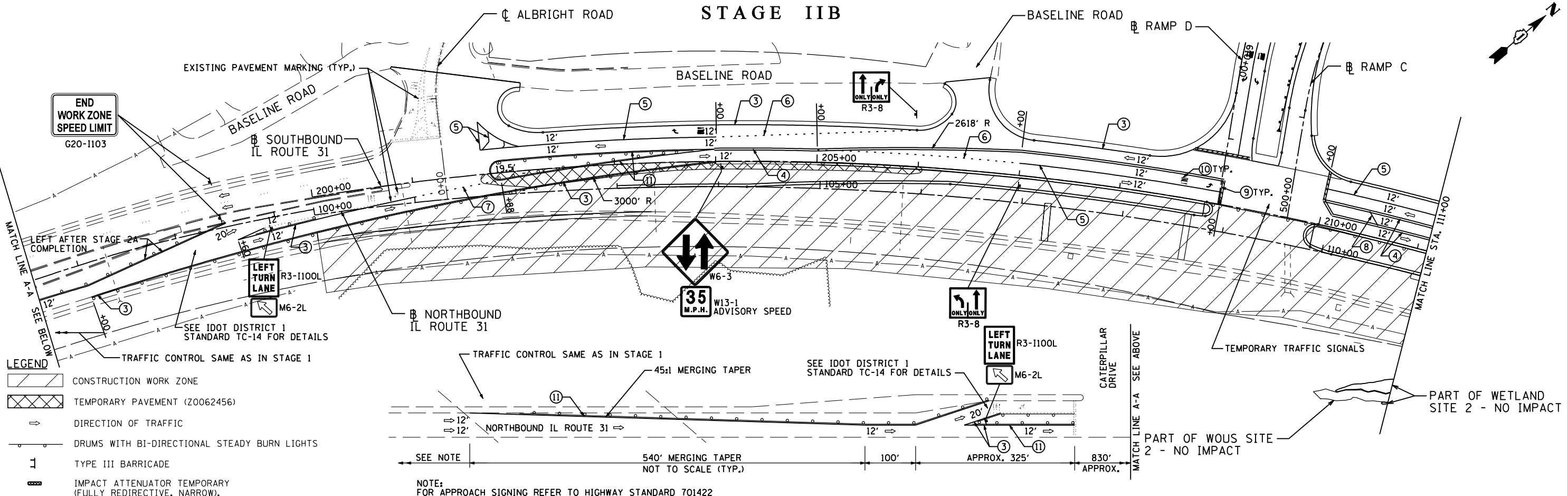
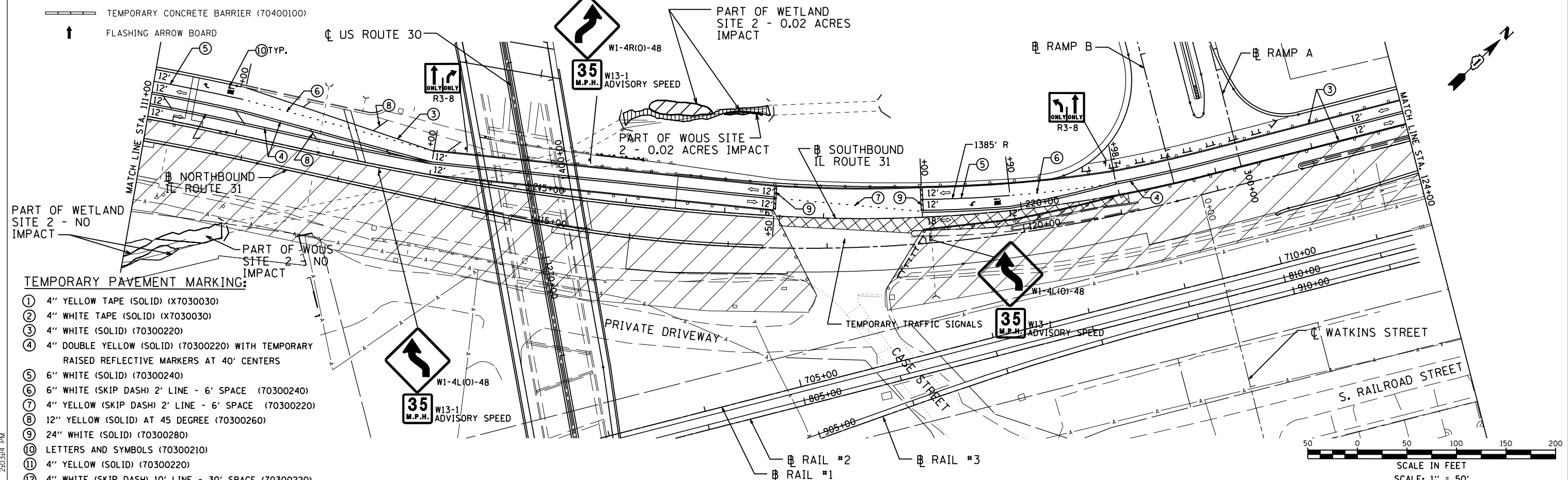


# STAGE IIB



- LEGEND**
- CONSTRUCTION WORK ZONE
  - TEMPORARY PAVEMENT (Z0062456)
  - DIRECTION OF TRAFFIC
  - DRUMS WITH BI-DIRECTIONAL STEADY BURN LIGHTS
  - TYPE III BARRICADE
  - IMPACT ATTENUATOR TEMPORARY (FULLY REDIRECTIVE, NARROW), TEST LEVEL 2 (Z0030255)
  - TEMPORARY CONCRETE BARRIER (70400100)
  - FLASHING ARROW BOARD

NOTE:  
FOR APPROACH SIGNING REFER TO HIGHWAY STANDARD 701422



- TEMPORARY PAVEMENT MARKING:**
- ① 4" YELLOW TAPE (SOLID) (X7030030)
  - ② 4" WHITE TAPE (SOLID) (X7030030)
  - ③ 4" WHITE (SOLID) (70300220)
  - ④ 4" DOUBLE YELLOW (SOLID) (70300220) WITH TEMPORARY RAISED REFLECTIVE MARKERS AT 40' CENTERS
  - ⑤ 6" WHITE (SOLID) (70300240)
  - ⑥ 6" WHITE (SKIP DASH) 2' LINE - 6' SPACE (70300240)
  - ⑦ 4" YELLOW (SKIP DASH) 2' LINE - 6' SPACE (70300220)
  - ⑧ 12" YELLOW (SOLID) AT 45 DEGREE (70300260)
  - ⑨ 24" WHITE (SOLID) (70300280)
  - ⑩ LETTERS AND SYMBOLS (70300210)
  - ⑪ 4" YELLOW (SOLID) (70300220)
  - ⑫ 4" WHITE (SKIP DASH) 10' LINE - 30' SPACE (70300220)

**STATE OF ILLINOIS  
DEPARTMENT OF TRANSPORTATION**

**U.S. ROUTE 30 AT IL ROUTE 31  
SUGGESTED STAGING AND TRAFFIC CONTROL - STAGE 2B  
IL ROUTE 31**

F.A.P. RTE.	SECTION	COUNTY	TOTAL SHEETS	SHEET NO.
349	(10 & 11 VB) R-3		507	107
KANE AND KENDALL			CONTRACT NO. 60133	
ILLINOIS FED. AID PROJECT				

USER NAME = 1654	DESIGNED - JWB	REVISED -
	DRAWN - JWB	REVISED -
PLOT SCALE = 100.0000' / IN.	CHECKED - RS	REVISED -
PLOT DATE = 8/8/2012	DATE - 06/15/2012	REVISED -

SCALE: 1"=50' SHEET NO. MOT-20 OF 27 STA. 100+00 TO STA. 124+00

SCALE IN FEET  
SCALE: 1" = 50'

P:\Jobs\2010\201030033\cadd\site\dmr\00\060133-sht+mot+2B-01.dgn  
 8/8/2012 2:03:44 PM