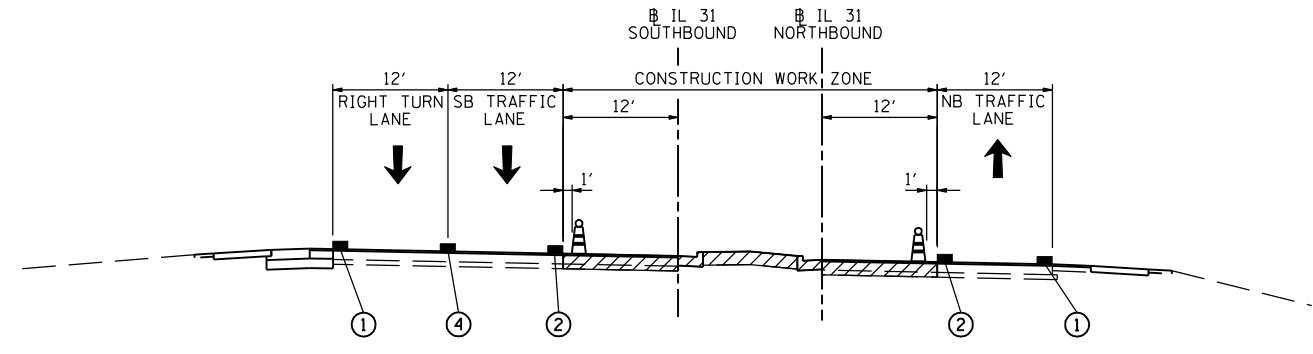


MAINTENANCE OF TRAFFIC - STAGE 3
US 30






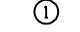

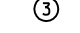

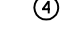
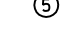
STA. 1250+00
(LOOKING EAST)

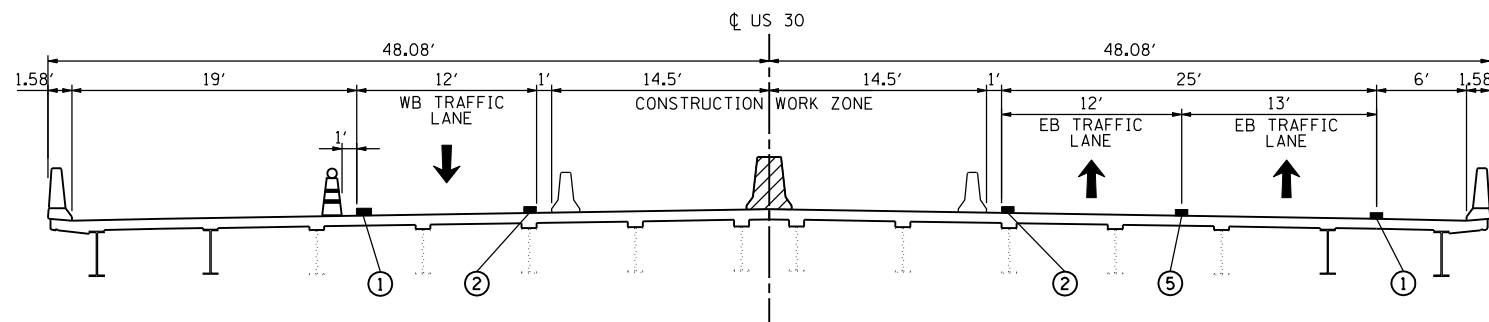


MAINTENANCE OF TRAFFIC - STAGE 3
IL 31

STA. 104+00
(LOOKING NORTH)

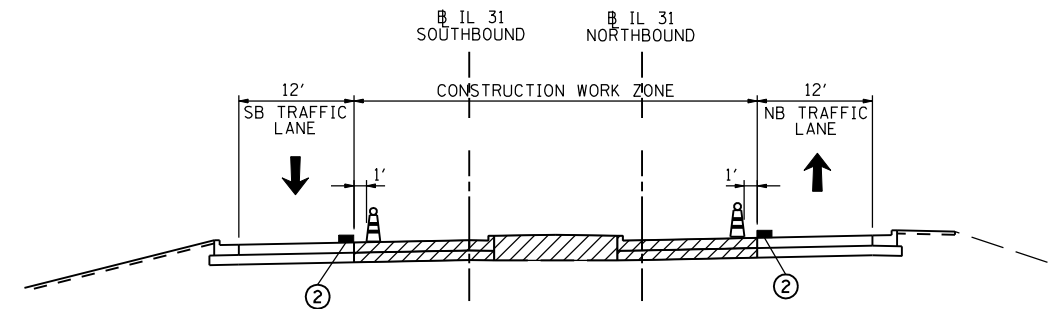
LEGEND:

-  AREA OF PROPOSED CONSTRUCTION
-  DRUM WITH BIDIRECTIONAL STEADY BURN LIGHT ON 2-LANE ROADWAYS AND MONODIRECTIONAL ON MULTILANE ROADWAYS
-  DOUBLE VERTICAL PANEL (ONE PANEL ON EACH SIDE OF POST) WITH BIDIRECTIONAL STEADY BURN LIGHT
-  TEMPORARY CONCRETE BARRIER WITH TYPE C MARKERS PER STANDARD 704001
-  PAVEMENT MARKING:
-  4" SOLID WHITE LINE
-  4" SOLID YELLOW LINE
-  2-4" SOLID YELLOW LINE @ 11" C-C WITH YELLOW TEMPORARY RAISED REFLECTIVE PAVEMENT MARKERS AT 40' CENTERS (TYP.)
-  6" SOLID WHITE LINE
-  4" WHITE (SKIP DASH) 10' LINE - 30' SPACE
-  EXISTING PAVEMENT MARKING



MAINTENANCE OF TRAFFIC - STAGE 3
US 30

STA. 1271+00
(LOOKING EAST)



MAINTENANCE OF TRAFFIC - STAGE 3
IL 31

STA. 128+00
(LOOKING NORTH)

F:\Jobs\2010\20103003\cd\site\vdgn\00\0160133-sht-mot-typicat-04.dgn 8/8/2012 2:03:38 PM

USER NAME = 1654	DESIGNED - JWB	REVISED -
PLOT SCALE = 20.0000' / IN.	DRAWN - JWB	REVISED -
PLOT DATE = 8/8/2012	CHECKED - RS	REVISED -
	DATE - 06/15/2012	REVISED -

F.A.P. RTE.	SECTION	COUNTY	TOTAL SHEETS	SHEET NO.
349	(10 & 11 VB) R-3	*	507	110
* KANE AND KENDALL			CONTRACT NO. 60133	
ILLINOIS FED. AID PROJECT				