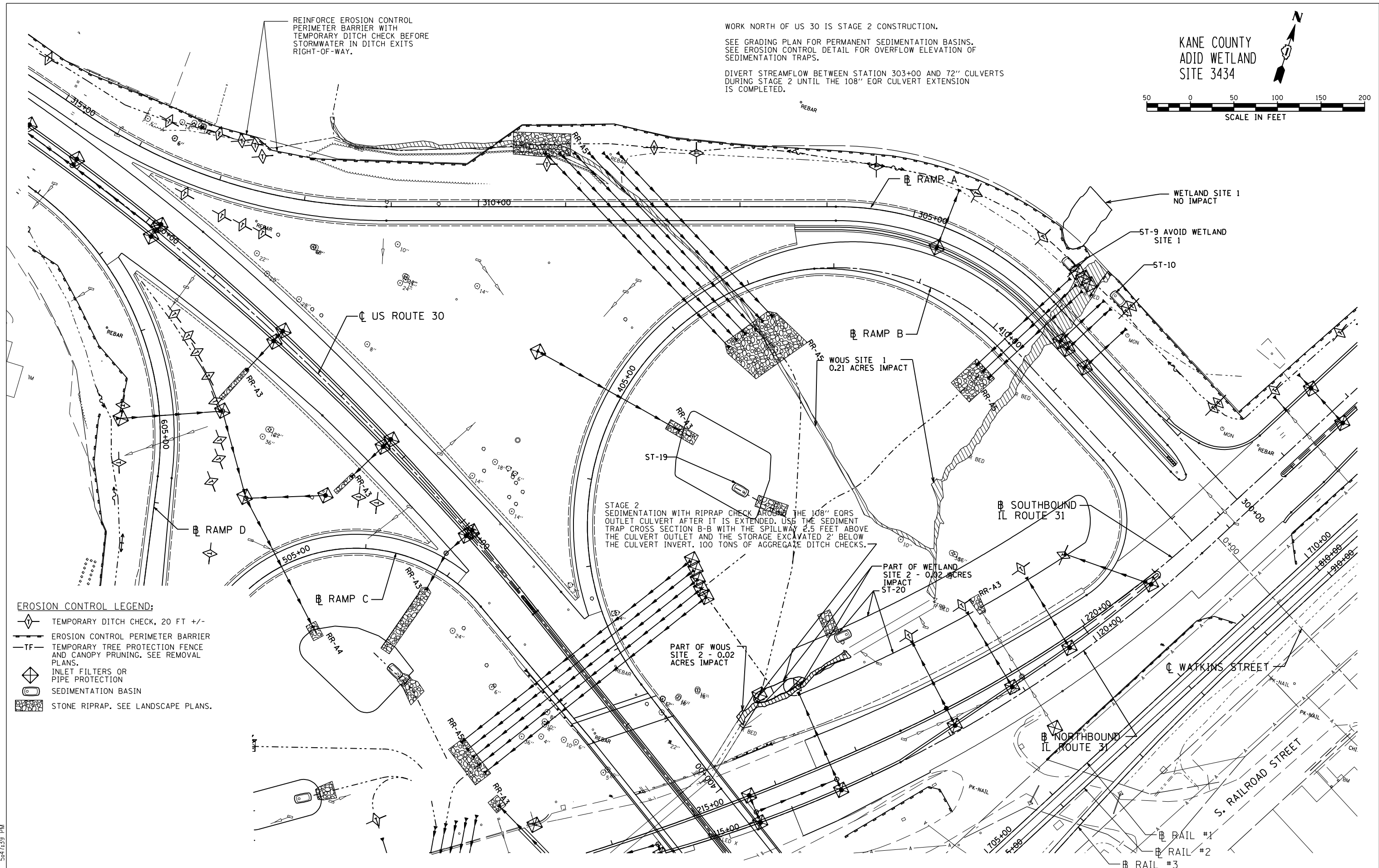


KANE COUNTY
ADID WETLAND
SITE 3434



WORK NORTH OF US 30 IS STAGE 2 CONSTRUCTION.
SEE GRADING PLAN FOR PERMANENT SEDIMENTATION BASINS.
SEE EROSION CONTROL DETAIL FOR OVERFLOW ELEVATION OF
SEDIMENTATION TRAPS.
DIVERT STREAMFLOW BETWEEN STATION 303+00 AND 72" CULVERTS
DURING STAGE 2 UNTIL THE 108" EOR CULVERT EXTENSION
IS COMPLETED.

REINFORCE EROSION CONTROL
PERIMETER BARRIER WITH
TEMPORARY DITCH CHECK BEFORE
STORMWATER IN DITCH EXITS
RIGHT-OF-WAY.



- EROSION CONTROL LEGEND:**
- TEMPORARY DITCH CHECK, 20 FT +/-
 - EROSION CONTROL PERIMETER BARRIER
 - TEMPORARY TREE PROTECTION FENCE AND CANOPY PRUNING. SEE REMOVAL PLANS.
 - INLET FILTERS OR PIPE PROTECTION
 - SEDIMENTATION BASIN
 - STONE RIPRAP. SEE LANDSCAPE PLANS.

P:\Jobs\2010\201030033\cadd\site\vdgn\00\0160133-sht+eros-05.dgn
 6/15/2012 5:47:39 PM

USER NAME = 1654	DESIGNED - JWB	REVISED -
	DRAWN - JWB	REVISED -
PLOT SCALE = 100.0000' / IN.	CHECKED - RS	REVISED -
PLOT DATE = 6/15/2012	DATE - 06/15/2012	REVISED -

**STATE OF ILLINOIS
DEPARTMENT OF TRANSPORTATION**

**U.S. ROUTE 30 AT IL ROUTE 31
EROSION AND SEDIMENT CONTROL PLAN - RAMP A AND RAMP B**

SCALE: 1"=50' SHEET NO. --

(RAMP A) STA. 300+00 TO STA. 314+75
(RAMP B) STA. 400+00 TO STA. 413+34

F.A.P. RTE.	SECTION	COUNTY	TOTAL SHEETS	SHEET NO.
349	(10 & 11 VB) R-3	-	507	119
KANE AND KENDALL			CONTRACT NO. 60133	
ILLINOIS FED. AID PROJECT				