

EROSION AND SEDIMENT CONTROL NOTES

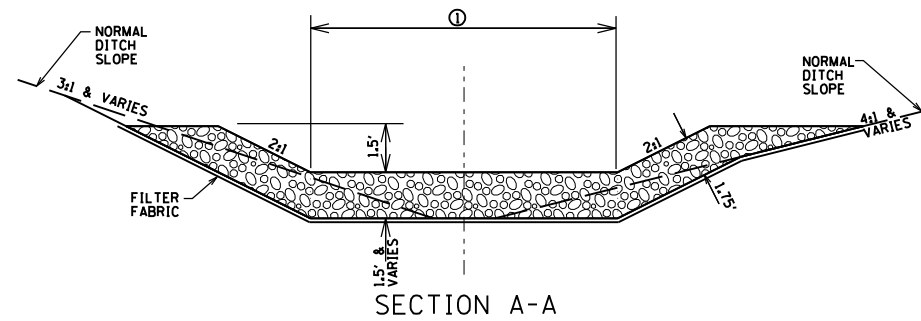
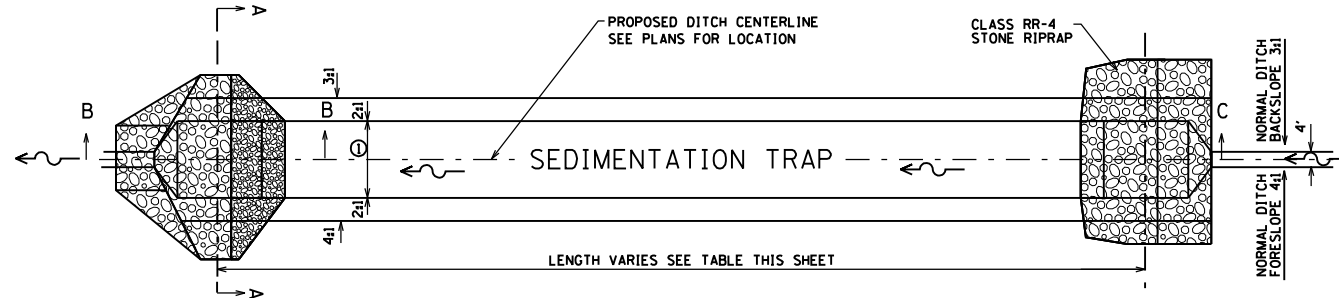
1. EROSION CONTROL ITEMS ARE CONSIDERED TO BE HIGH PRIORITY ITEMS ON THIS CONTRACT. THE ENGINEER WILL IMPLEMENT ALL PROVISIONS OF THE SPECIFICATION NECESSARY TO ASSURE THAT EROSION CONTROL ITEMS ARE CONSTRUCTED AND MAINTAINED IN A TIMELY WAY. ALL EROSION CONTROL MEASURES SHALL BE INSTALLED PRIOR TO BEGINNING ANY CONSTRUCTION ACTIVITIES WHICH WILL POTENTIALLY CREATE ERODABLE CONDITIONS.
2. THE EROSION CONTROL MEASURES SHOWN ARE BUT A GRAPHICAL REPRESENTATION OF SUGGESTED MEASURES. DEVIATIONS FROM THIS PLAN ARE TO BE EXPECTED PENDING A JOBSITE INSPECTION BETWEEN THE CONTRACTOR AND THE DEPARTMENT.
3. TEMPORARY SEEDING IS PROVIDED FOR ALL DISTURBED AREA THAT IS NOT PAVED OR GRAVELED. THE CONTRACTOR SHALL STABILIZE ALL DISTURBED AREAS WITHIN 14 DAYS OF INITIAL DISTURBANCE WITH TEMPORARY OR PERMANENT SEEDING.

SEDIMENT TRAP INSPECTION/MAINTENANCE:

1. SEDIMENT TRAPS ARE TO BE INSPECTED BY THE RESIDENT ENGINEER AND CONTRACTOR EVERY 7 CALENDAR DAYS AND AFTER A STORM EVENT OF 0.5" OR GREATER (INCLUDING SNOWFALL) ON A TEMPORARY BASIS. ON A PERMANENT BASIS, TRAPS SHOULD BE CHECKED AT LEAST ONCE EVERY 2 YEARS.
2. THE TRAP SHOULD BE CLEANED OF SILT WHEN THE TRAP BECOMES 50% FILLED. THE MATERIAL REMOVED MUST BE DISPOSED OF IN ACCORDANCE WITH GOOD HOUSEKEEPING PRACTICES, INCORPORATED INTO THE FILL MATERIAL, OR DISPOSED OF IN ACCORDANCE WITH IEPA REGULATIONS.
3. INSPECT THE OUTLET FOR EROSION AND ANY NEEDED STABILIZATION.
4. INSPECT THE OUTLET FOR ANY SEDIMENT DISCHARGE AND DISCOLORED WATER.
5. IF SEDIMENT IS DISCHARGED OR OTHER POLLUTANTS ARE IDENTIFIED AT THE DISCHARGE POINT, OTHER BMPS, SUCH AS SAND FILTERS, MAY BE REQUIRED TO FILTER POLLUTANTS.
6. NOTE THAT THE FIRST DITCH CHECK IS PRIMARILY USED TO SLOW THE WATER, WHILE THE SECOND IS PRIMARILY USED TO CATCH REMAINING SEDIMENT. INSPECTION OF THE FIRST DITCH CHECK, THEREFORE, IS PRIMARILY A STRUCTURAL INSPECTION, WHILE THE SECOND IS PRIMARILY A CHECK FOR SEDIMENT CLOGGING.

The drainage structure inlet filter assembly bag shall be constructed of polypropylene geotextile fabric with a minimum weight of 4 ounces per square yard, minimum flow rate of 145 gallons per minute per square foot, and designed for minimum silt and debris capacity of 2 cubic feet. The filter bag shall be reinforced with an outer layer of polyester mesh fabric with a minimum weight of 4 ounces per square yard. The filter bag shall be suspended from the steel frame with a stainless steel band and locking cap. The inlet filter assembly frame shall not cause the drainage structure grate to extend higher than 1/8-inch above the drainage structure frame.

BASIS OF PAYMENT: The work will be paid for at the contract unit price per EACH for INLET FILTER, which price shall include all cost of labor, materials, equipment, and incidental items necessary to perform the work.

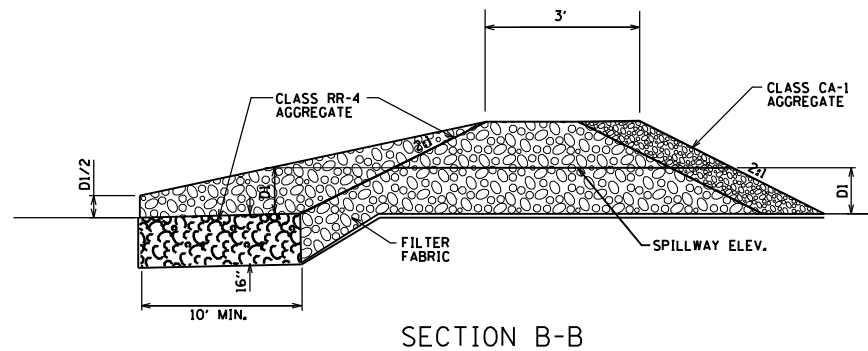


① SEE CROSS SECTION FOR WIDTH AND INVERT ELEVATION

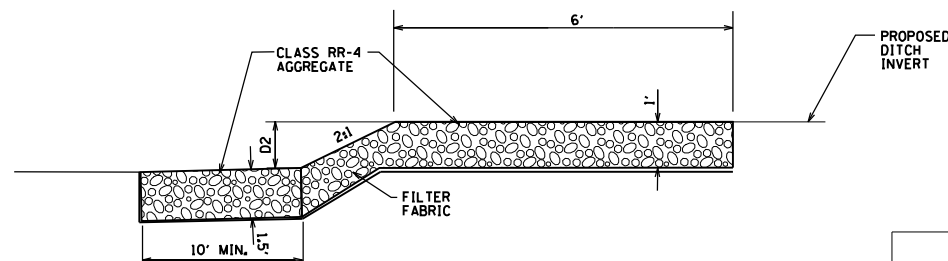
THE UNIT WEIGHT USED TO CALCULATE RR-4 STONE IS 110 LBS/CU FT.

THE UNIT WEIGHT USED TO CALCULATE CA-2 AGGREGATE IS 125 LBS/CU FT.

THE DITCH CHECKS SECTION B-B AND C-C WILL BE PAID FOR AS AGGREGATE DITCH CHECKS IN TONS AND FILTER FABRIC IN SQ. YDS.



SECTION B-B



SECTION C-C

SEDIMENT TRAP NO.	LOCATION			LENGTH (FT)	WIDTH ①	DEPTH (FT)		SPILLWAY	
	FROM	TO				D1	D2	ELEV.	WIDTH (FT)
ST-1	1240+20	1242+20	RT	200	varies	2.0	2.0	654.66	8
ST-2	1250+00	1252+85	RT	300	varies	2.0	2.4	648.70	10
ST-3	1253+15	1253+50	RT	50	varies	2.0	2.0	648.00	9.5
ST-4	1258+00	1259+00	RT	100	18'	2.0	1.1	646.89	18
ST-9	303+25	304+25	RT	100	10'	2.3	1.2	634.20	10
ST-10	300+50	302+00	RT	150	varies	2.0	1.8	634.20	24
ST-11	124+75	126+05	LT	130	varies	2.0	1.0	636.10	10
ST-15	108+70	110+70	RT	200	varies	1.0	1.6	634.80	4
ST-17	SEE GRADING PLAN					2.0	0.0	633.00	-
ST-18	SEE GRADING PLAN					2.0	0.0	633.00	-
ST-19	SEE GRADING PLAN					3.0	0.0	633.00	-
ST-20	SEE GRADING PLAN					2.0	0.0	631.00	-

FROM	TO	20101000	28000250	28000305	28000315	28000400	28000500	28000510	28100105	28100107	28100109	28200200											
		TEMPORARY FENCE	TEMPORARY EROSION CONTROL SEEDING	TEMPORARY DITCH CHECK	AGGREGATE DITCH CHECKS	PERIMETER EROSION BARRIER	INLET AND PIPE PROTECTION	INLET FILTERS	STONE RIPRAP, CLASS A3	STONE RIPRAP, CLASS A4	STONE RIPRAP, CLASS A5	FILTER FABRIC											
		FOOT	POUND	FOOT	TON	FOOT	EACH	EACH	SQ YD	SQ YD	SQ YD	SQ YD											
STATION	STATION	STAGE 1	STAGE 2	STAGE 1	STAGE 2	STAGE 1	STAGE 2	STAGE 1	STAGE 2	STAGE 1	STAGE 2	STAGE 1	STAGE 2	STAGE 1	STAGE 2	STAGE 1	STAGE 2	STAGE 1	STAGE 2	STAGE 1	STAGE 2		
ILLINOIS 31																							
100+00	109+00	0	0	0	45	0	120	0	0	0	1580	0	0	0	6	0	32	0	0	0	0	0	
109+00	122+00	390	0	0	19	0	100	0	72.4	0	1000	0	0	0	16	0	22	0	0	0	397	0	574
122+00	235+00	0	0	0	104	0	200	0	74.5	0	1950	0	0	0	21	0	47	0	0	0	0	0	164
US 30 AND RAMPS																							
1237+75	1261+00	0	110	168	146	480	480	294.6	0	2200	2350	2	1	7	12	57	70	0	57	0	0	504	150
1261+00	1280+00	0	45	196	763	200	200	277.9	520.1	1385	1900	0	5	2	9	480	73	98	0	112	772	1152	1680
SUB TOTAL		390	155	364	1,077	680	1,100	573	667	3,585	8,780	2	6	9	64	536	244	98	57	112	1,168	1,656	2,568
TOTAL		545		1,441		1,780		1,240		12,365		8		73		780		155		1,280		4,224	

H:\Jobs\2010\20100303\CAD\Site\erodn\00\0160133-sht+erodn-Detail-01.dgn 6/15/2012 5:53:45 PM

USER NAME = 1654	DESIGNED - JWB	REVISED -
	DRAWN - JWB	REVISED -
PLOT SCALE = 25.0000' / IN.	CHECKED - RS	REVISED -
PLOT DATE = 6/15/2012	DATE - 06/15/2012	REVISED -

**STATE OF ILLINOIS
DEPARTMENT OF TRANSPORTATION**

**U.S. ROUTE 30 AT IL ROUTE 31
EROSION CONTROL DETAILS AND NOTES**

F.A.P. RTE.	SECTION	COUNTY	TOTAL SHEETS	SHEET NO.
349	(10 & 11 VB) R-3	-	507	121
KANE AND KENDALL			CONTRACT NO. 60133	
ILLINOIS FED. AID PROJECT				