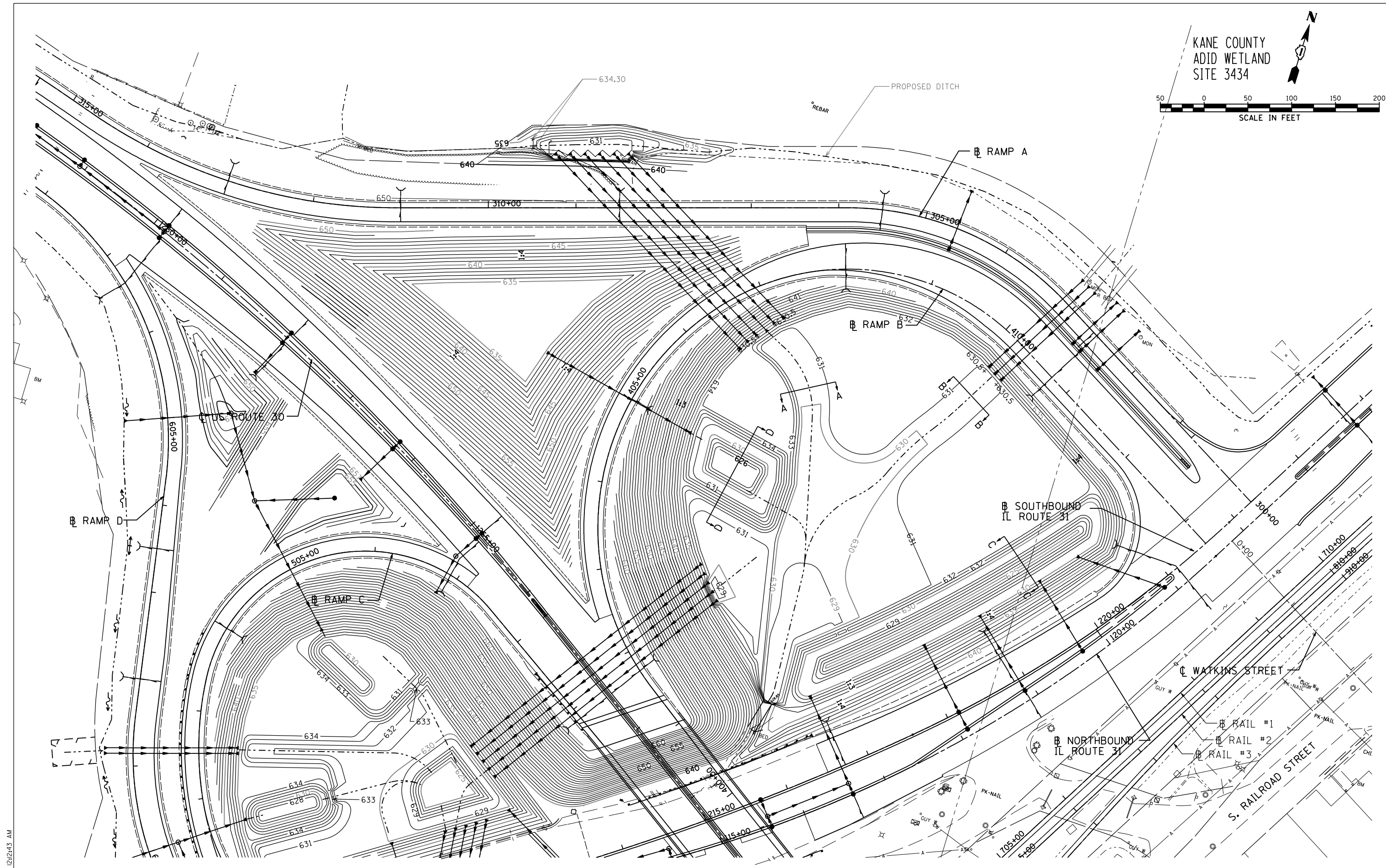


KANE COUNTY
ADID WETLAND
SITE 3434



5/16/2012 12:42:43 AM

USER NAME = 1654	DESIGNED - JWB	REVISED -
PLOT SCALE = 100.0000' / IN.	DRAWN - JWB	REVISED -
PLOT DATE = 5/16/2012	CHECKED - RS	REVISED -
	DATE - 05/11/2012	REVISED -

**STATE OF ILLINOIS
DEPARTMENT OF TRANSPORTATION**

U.S. ROUTE 30 AT IL ROUTE 31 GRADING PLAN - RAMP A AND RAMP B	
SCALE: 1"=50'	SHEET NO. --
(RAMP A) STA. 300+00 TO STA. 314+75	(RAMP B) STA. 400+00 TO STA. 413+34

F.A.P. RTE. 349	SECTION (10 & 11 VB) R-3	COUNTY *	TOTAL SHEETS 507	SHEET NO. 149
* KANE AND KENDALL			CONTRACT NO. 60133	
ILLINOIS FED. AID PROJECT				