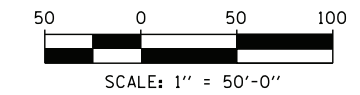
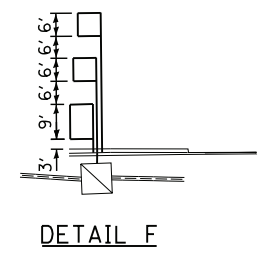
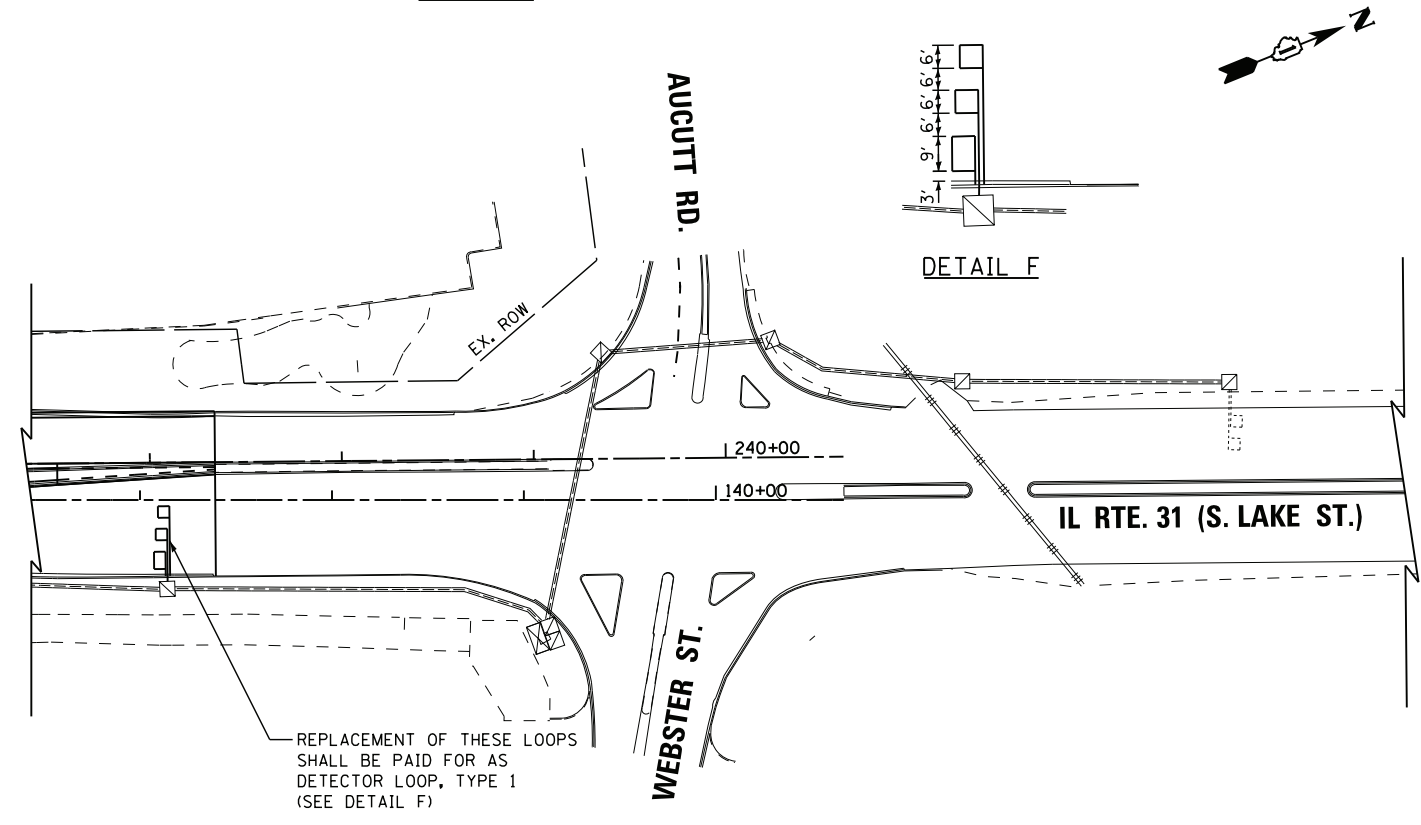


SCHEDULE OF QUANTITIES

| ITEM | UNIT | QUANTITY |
|-----------------------|------|----------|
| DETECTOR LOOP, TYPE I | FOOT | 914 |



| | | | |
|---|-----------------------|------------------|-----------|
| FILE NAME = | USER NAME = *USER* | DESIGNED - KMM | REVISED - |
| K:\Projects\090064\Design\Sheet Files\DI60133rwa31LoopDet.dgn | | DRAWN - LV | REVISED - |
| | PLOT SCALE = *SCALE* | CHECKED - JDH | REVISED - |
| | PLOT DATE = 6/20/2012 | DATE - 6/15/2012 | REVISED - |

**STATE OF ILLINOIS
 DEPARTMENT OF TRANSPORTATION**

**REPLACEMENT DETECTOR LOOP DETAIL
 AT CATERPILLAR DRIVE AND AT AUCUTT ROAD /WEBSTER STREET**
 SCALE: 1"=50' SHEET NO. 1 OF 1 SHEETS STA. 185+00 TO STA. 215+00

| F.A. RTE. | SECTION | COUNTY | TOTAL SHEETS | SHEET NO. |
|---------------------------|------------------|--------|--------------------|-----------|
| 349 | (10 & 11 VB) R-3 | | 507 | 187 |
| KANE AND KENDALL | | | CONTRACT NO. 60133 | |
| ILLINOIS FED. AID PROJECT | | | | |

TS-23