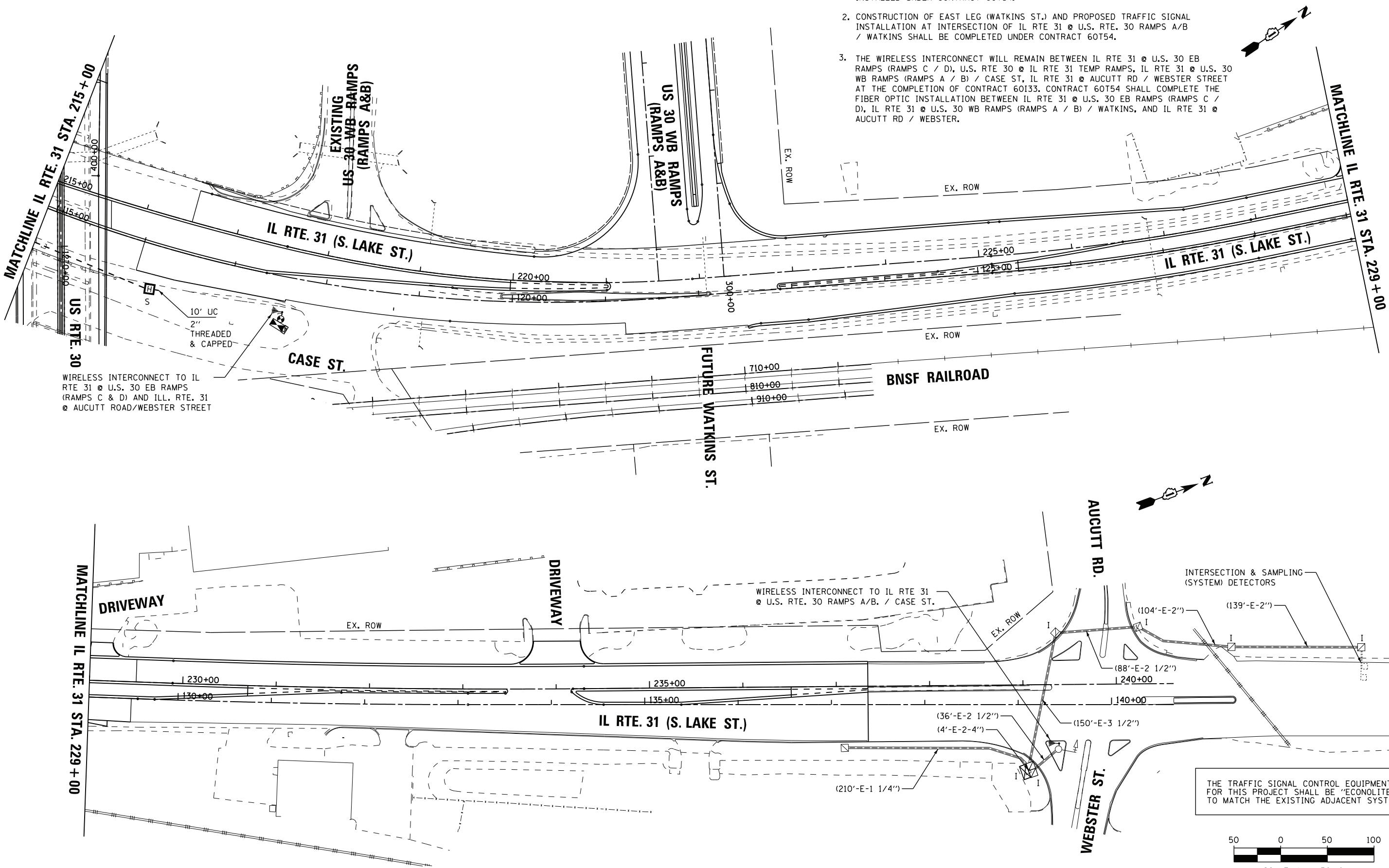


NOTES:

- ALL FIBER OPTIC NORTH OF THE IL31/ RAMP C/D CONTROLLER SHALL BE INSTALLED UNDER CONTRACT 60T54.
- CONSTRUCTION OF EAST LEG (WATKINS ST.) AND PROPOSED TRAFFIC SIGNAL INSTALLATION AT INTERSECTION OF IL RTE 31 @ U.S. RTE. 30 RAMP A/B / WATKINS SHALL BE COMPLETED UNDER CONTRACT 60T54.
- THE WIRELESS INTERCONNECT WILL REMAIN BETWEEN IL RTE 31 @ U.S. 30 EB RAMP (RAMP C / D), U.S. RTE 30 @ IL RTE 31 TEMP RAMP, IL RTE 31 @ U.S. 30 WB RAMP (RAMP A / B) / CASE ST, IL RTE 31 @ AUCUTT RD / WEBSTER STREET AT THE COMPLETION OF CONTRACT 60I33. CONTRACT 60T54 SHALL COMPLETE THE FIBER OPTIC INSTALLATION BETWEEN IL RTE 31 @ U.S. 30 EB RAMP (RAMP C / D), IL RTE 31 @ U.S. 30 WB RAMP (RAMP A / B) / WATKINS, AND IL RTE 31 @ AUCUTT RD / WEBSTER.

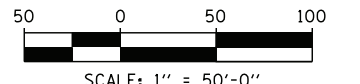


WIRELESS INTERCONNECT TO IL RTE 31 @ U.S. 30 EB RAMP (RAMP C & D) AND ILL. RTE. 31 @ AUCUTT ROAD/WEBSTER STREET

WIRELESS INTERCONNECT TO IL RTE 31 @ U.S. RTE. 30 RAMP A/B. / CASE ST.

INTERSECTION & SAMPLING (SYSTEM) DETECTORS

THE TRAFFIC SIGNAL CONTROL EQUIPMENT FOR THIS PROJECT SHALL BE "ECONOLITE" TO MATCH THE EXISTING ADJACENT SYSTEM



FILE NAME =	USER NAME = \$USER\$	DESIGNED - KMM	REVISED -	<b>STATE OF ILLINOIS DEPARTMENT OF TRANSPORTATION</b>	<b>INTERCONNECT PLAN IL ROUTE 31 FROM CATERPILLAR DRIVE TO AUCUTT ROAD /WEBSTER STREET</b>			F.A. RTE.	SECTION	COUNTY	TOTAL SHEETS	SHEET NO.
K:\Projects\090064\Design\Sheet Files\DI60I33rwa31int2.dgn		DRAWN - LV	REVISED -		SCALE: 1"=50'	SHEET NO. 2 OF 2 SHEETS	STA. 215+00 TO STA. 241+50	349	(10 & 11 VB) R-3		507	192
		CHECKED - JDH	REVISED -					KANE AND KENDALL		CONTRACT NO. 60I33		
		DATE - 6/15/2012	REVISED -					ILLINOIS FED. AID PROJECT				