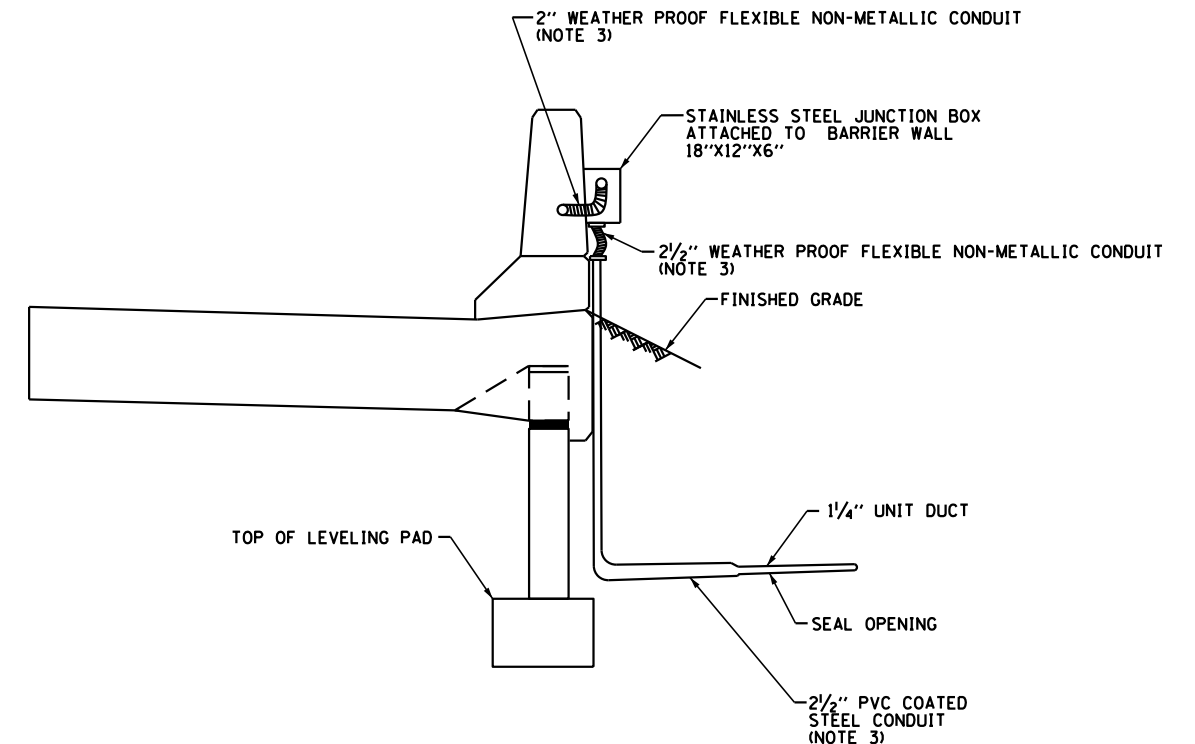


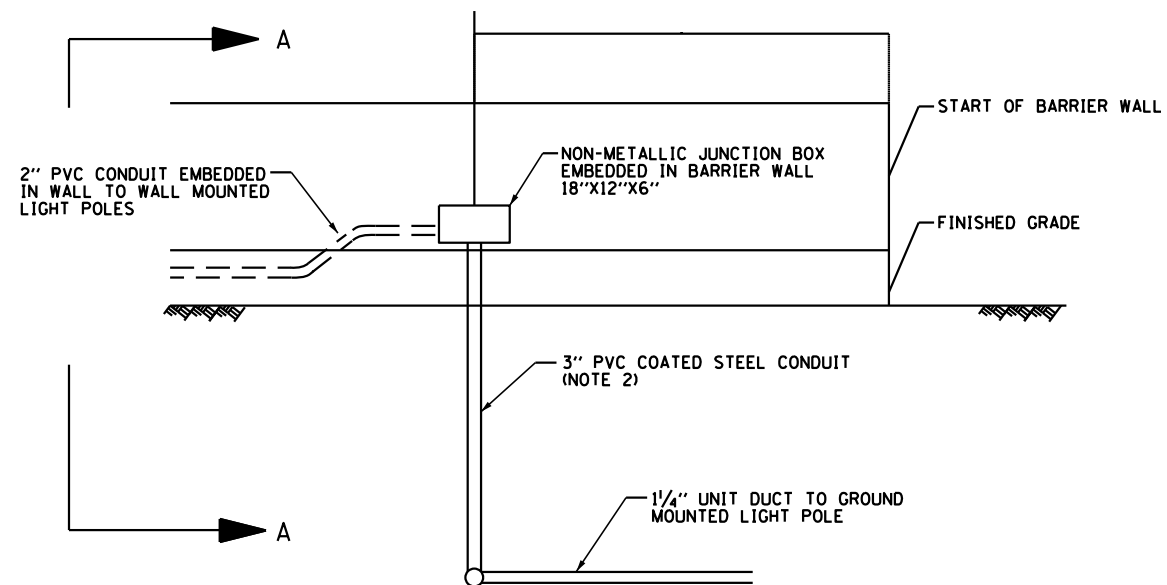
SECTION A-A



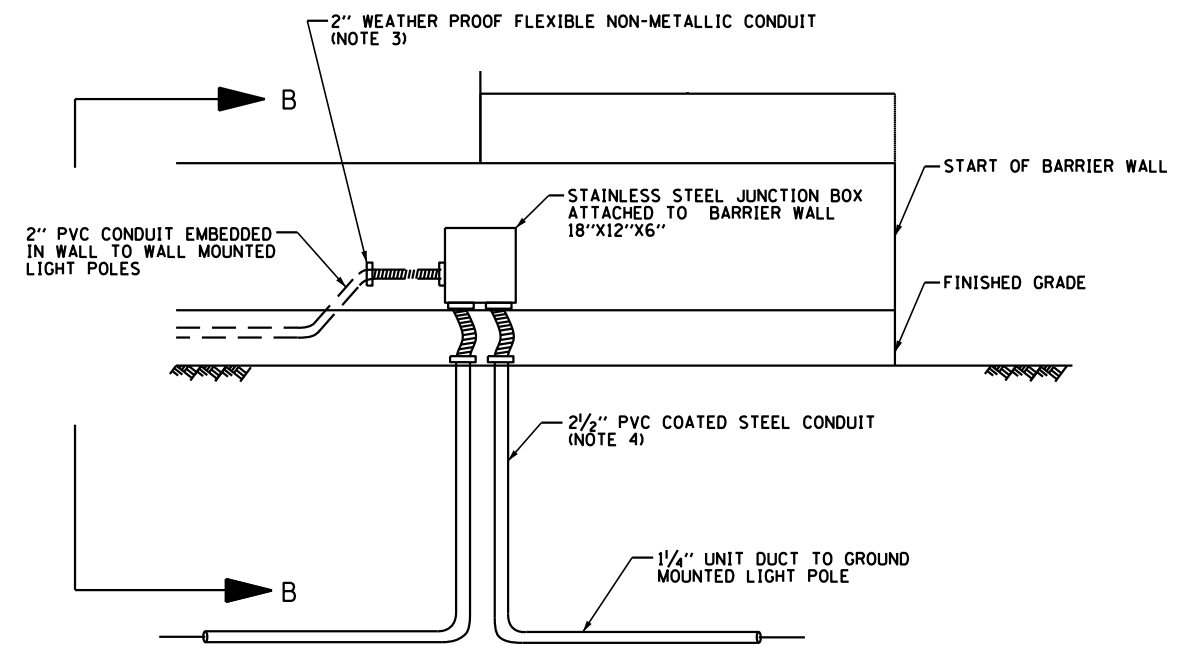
SECTION B-B

NOTES:

1. SEE SHEET L-1 FOR ELECTRICAL SYMBOLS, CALL-OUT SAMPLES, AND ABBREVIATIONS.
2. THE 3" COATED CONDUIT SLEEVE SHALL NOT BE MEASURED FOR PAYMENT BUT SHALL BE INCLUDED IN THE COST OF EACH JUNCTION BOX, EMBEDDED IN STRUCTURE, 18"X12"X6".
3. ALL CONDUITS WITH THEIR FITTING INCLUDING WEATHER PROOF FLEXIBLE NON-METALLIC CONDUIT PIECE SHALL BE INCIDENTAL ASSOCIATED CONDUIT PAY ITEMS.
4. CONTRACTOR SHALL COORDINATE WITH RETAINING WALL CONSTRUCTION FOR EXACT LOCATION OF CONDUIT TRANSITION.



JUNCTION BOX EMBEDDED IN BARRIER WALL
DETAIL-A



JUNCTION BOX ATTACHED TO BARRIER WALL
DETAIL-B

J:\265\dgn\Sheets\160133-sht-light-12.dgn
 6/26/2012 11:26:45 AM

SINGH
CONSULTING ENGINEERS
www.singhinc.com

USER NAME = kprejapati	DESIGNED - KP	REVISED -
	DRAWN - WC/RP	REVISED -
PLOT SCALE = 100.0000' / 1" =	CHECKED - GR	REVISED -
PLOT DATE = 6/26/2012	DATE - 06/15/2012	REVISED -

**STATE OF ILLINOIS
DEPARTMENT OF TRANSPORTATION**

**U.S. ROUTE 30 AT IL ROUTE 31
CONDUIT TRANSITION DETAILS**

SCALE: N.T.S. SHEET NO. 12 OF 27 SHEETS STA. ----- TO STA. -----

F.A.P. RTE.	SECTION	COUNTY	TOTAL SHEETS	SHEET NO.
349	(10 & 11 VB) R-3	*	507	206
* KANE AND KENDALL			CONTRACT NO. 60133	
ILLINOIS FED. AID PROJECT				