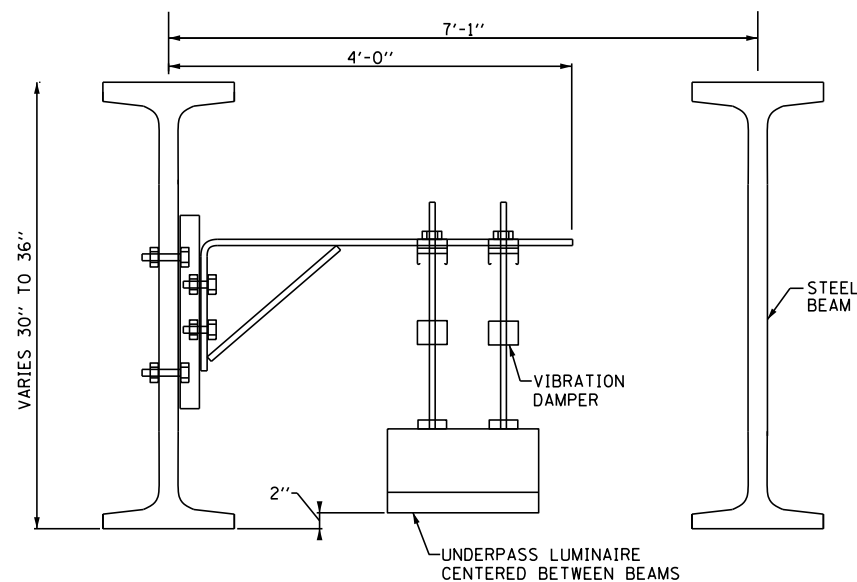


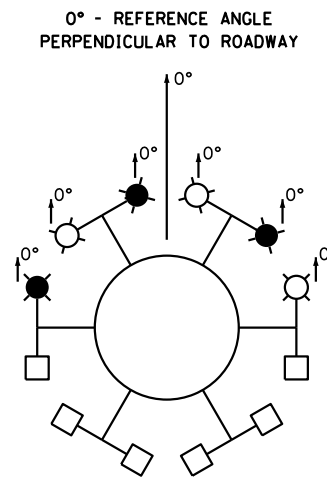
**UNDERPASS LUMINAIRE MOUNTING DETAILS**

**NOTES:**

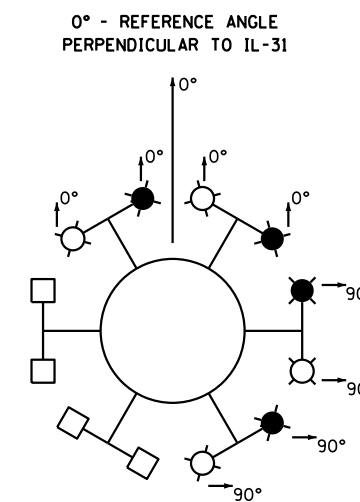
1. LIQUID TIGHT FLEXIBLE CONDUIT PIECE WITH THEIR FITTING SHALL BE INCIDENTAL TO UNDERPASS LUMINAIRE PAY ITEMS.
2. UNISTRUT CHANNEL SHALL BE CENTERED VERTICALLY ON BEAM AND DRILL HOLES AT 9" EQUAL SPACING FROM CENTER LINE AS SHOWN.



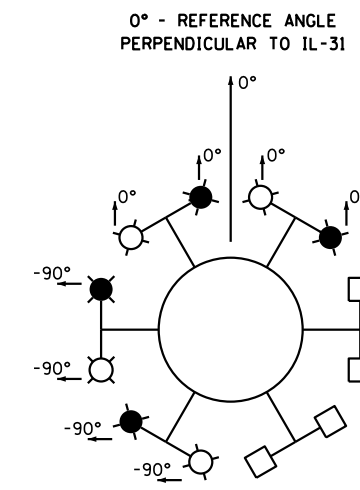
**UNDERPASS LUMINAIRE MOUNTING DETAILS - SECTION VIEW**



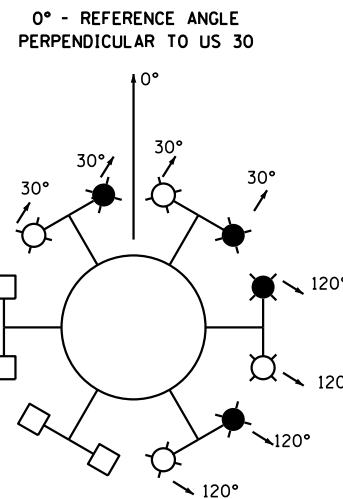
**LIGHT TOWER LAYOUT DETAIL  
TOWERS KFCD3, KFCD4, KFAB1,  
KFEF6, & KFGH3**



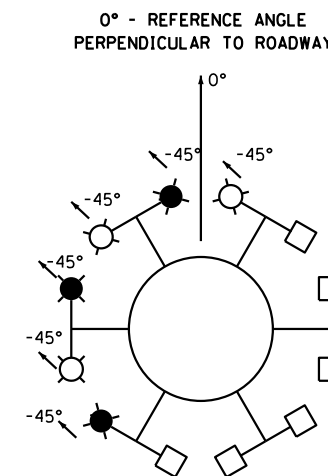
**LIGHT TOWER LAYOUT DETAIL  
TOWER KFAB2**



**LIGHT TOWER LAYOUT DETAIL  
TOWER KFGH4**



**LIGHT TOWER LAYOUT DETAIL  
TOWERS KFCD5**



**LIGHT TOWER LAYOUT DETAIL  
TOWERS KFEF5**

- ☉ LUMINAIRE RED PHASE
- LUMINAIRE BLACK PHASE
- COUNTER WEIGHT
- ◎ CCTV CAMERA

**NOTES:**

1. ARROWS AT THE LUMINAIRES REPRESENT THE ORIENTATION OF THE LUMINAIRE OPTICS.
2. ALL GIVEN ANGLES ARE WITH RESPECT TO THE REFERENCE ANGLE PERPENDICULAR TO THE ROADWAY AT THE LOCATION SHOWN ON THE PLANS.

**HIGH MAST LUMINAIRE ORIENTATION DETAILS**

**STATE OF ILLINOIS  
DEPARTMENT OF TRANSPORTATION**

**U.S. ROUTE 30 AT IL ROUTE 31  
UNDERPASS LUMINAIRE MOUNTING AND  
HIGH MAST LUMINAIRE ORIENTATION DETAIL**

SCALE: N.T.S. SHEET NO. 13 OF 27 SHEETS STA. ----- TO STA. -----

F.A.P. RTE.	SECTION	COUNTY	TOTAL SHEETS	SHEET NO.
349	(10 & 11 VB) R-3	*	507	207
* KANE AND KENDALL			CONTRACT NO. 60133	
ILLINOIS FED. AID PROJECT				

USER NAME = kprejapati	DESIGNED - KP	REVISED -
PLOT SCALE = 200.0000' / in.	DRAWN - WC/RP	REVISED -
PLOT DATE = 6/26/2012	CHECKED - GR	REVISED -
	DATE - 06/15/2012	REVISED -