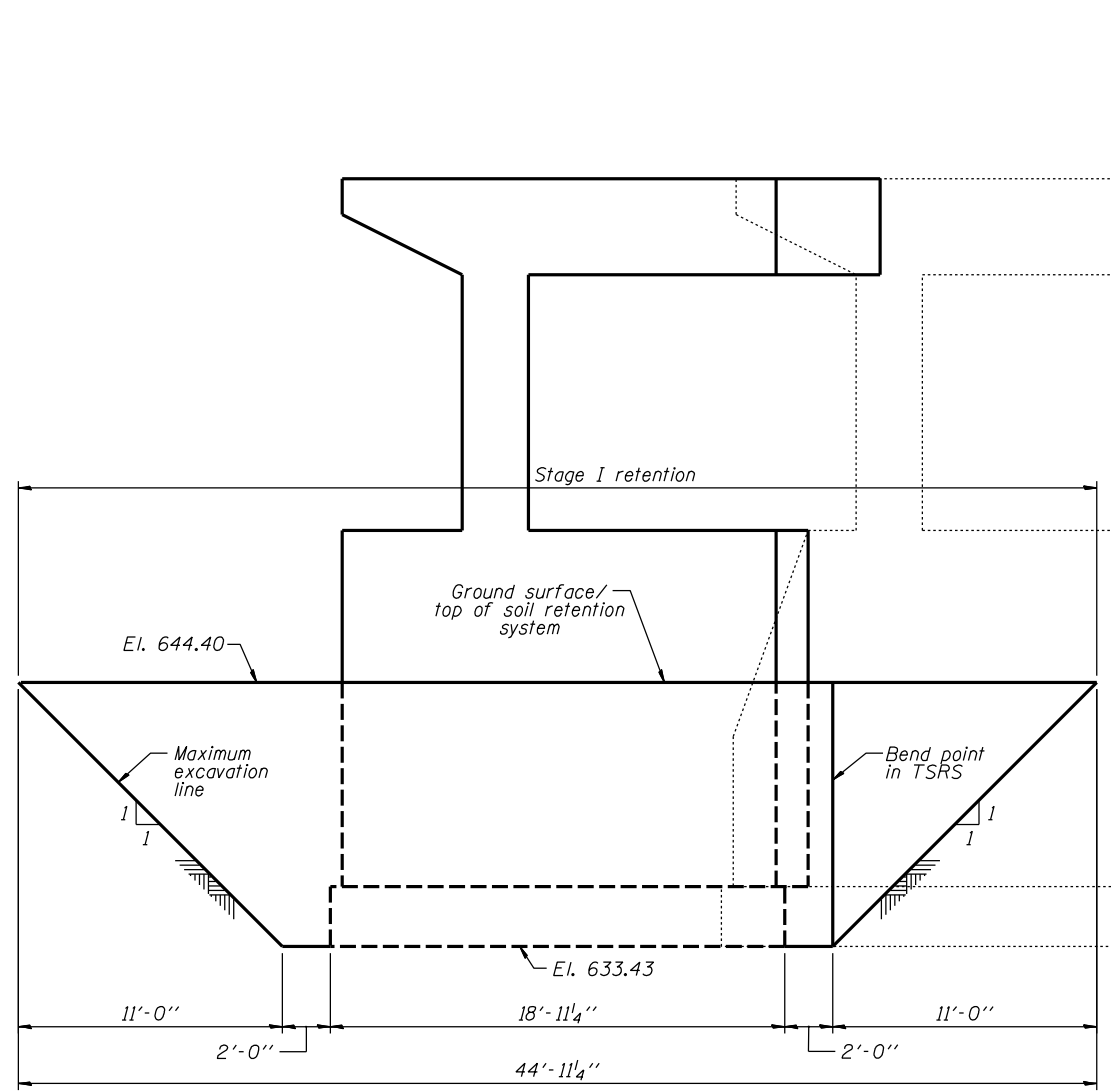
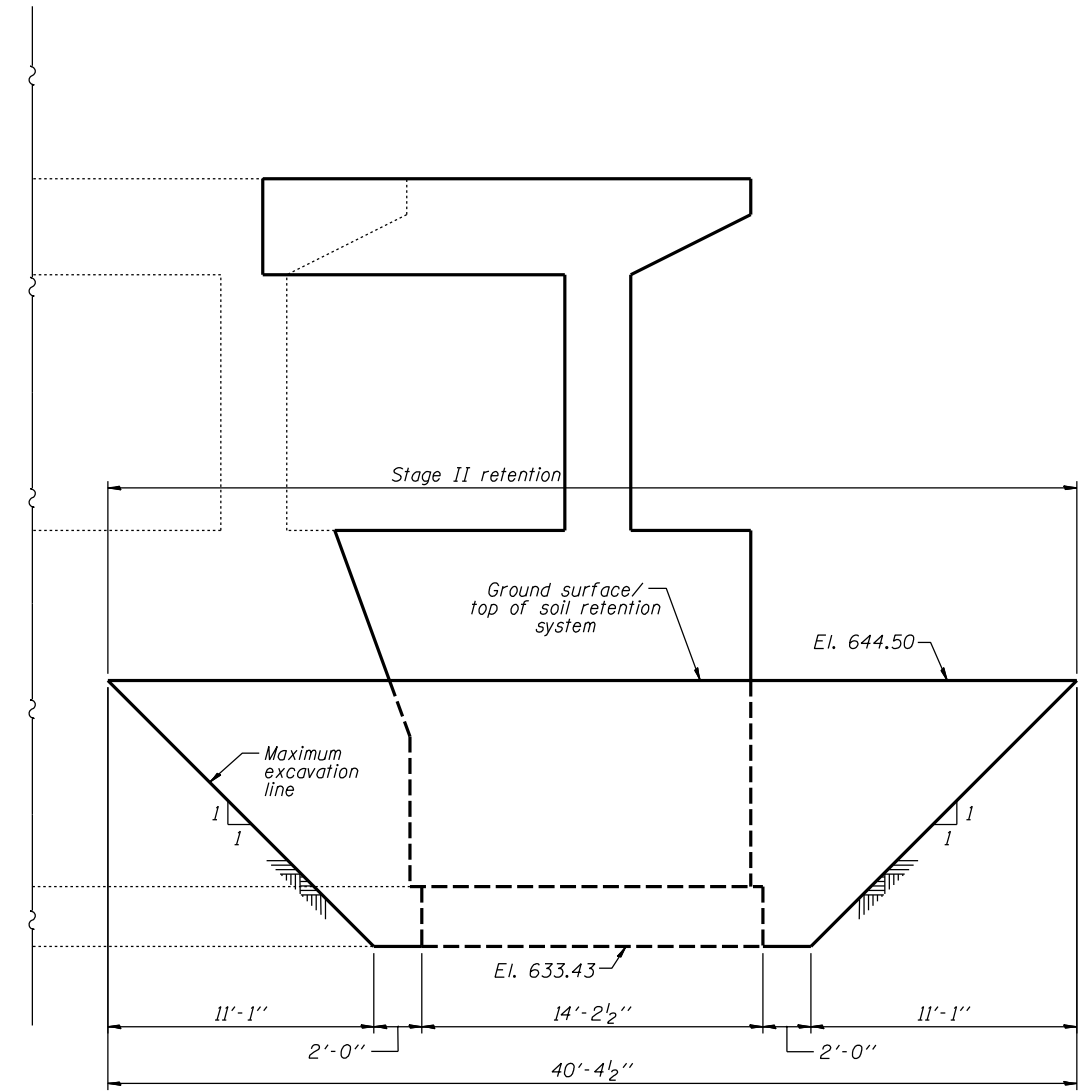


NOTES

1. A cantilevered sheet piling design does not appear feasible to temporarily support existing BNSF RR Track #1. Additional members or other retention systems may be necessary. The Contractor shall submit a temporary soil retention system design including plan details and calculations for review and acceptance by the Engineer.



**ELEVATION VIEW OF TEMPORARY SOIL RETENTION SYSTEM (TSRS)
LOOKING WEST AT PIER 6, SOUTH END**



**ELEVATION VIEW OF TEMPORARY SOIL RETENTION SYSTEM (TSRS)
LOOKING WEST AT PIER 6, NORTH END**

BILL OF MATERIAL

ITEM	UNIT	QUANTITY
Temporary Soil Retention System	Sq. Ft.	697

P:\10522010\20103003\cad\structural\dgn\045-0039_find\00\106033-e008-temp-soil-ret.dgn
 6/14/2012 6:04:49 PM

USER NAME =	DESIGNED - S.D.H. 6/15/2012	REVISED -
	CHECKED - J.J.G. 6/15/2012	REVISED -
PLOT SCALE =	DRAWN - S.R.K. 6/15/2012	REVISED -
PLOT DATE =	CHECKED - S.D.H. 6/15/2012	REVISED -

F.A.P. RTE.	SECTION	COUNTY	TOTAL SHEETS	SHEET NO.
349	(10 & 11VB) R-3	KANE	507	229
CONTRACT NO. 60133				