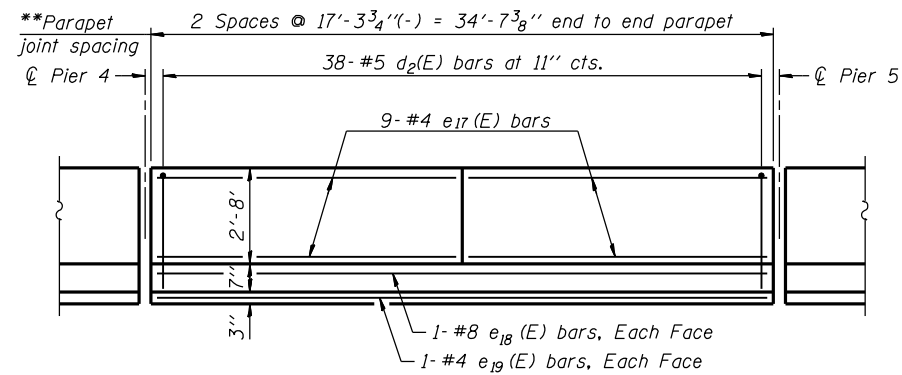
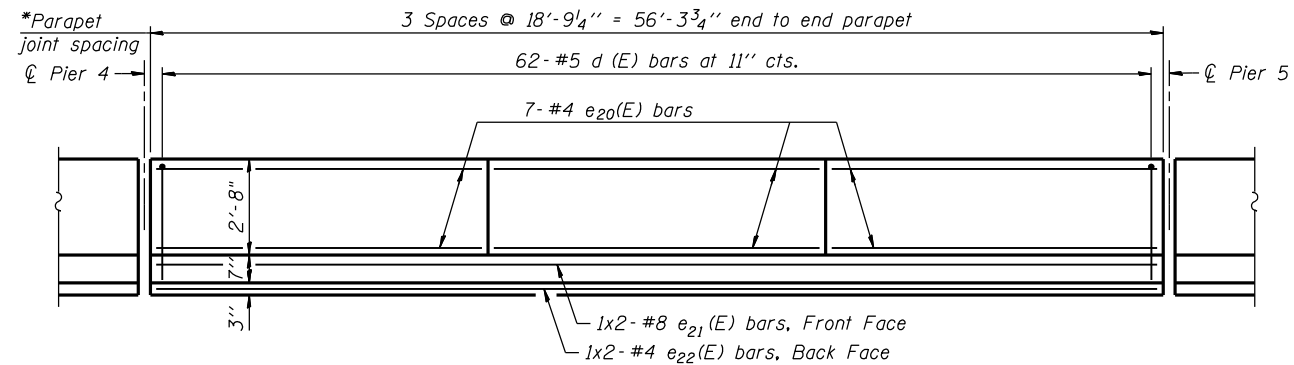


INSIDE ELEVATION OF NORTH PARAPET



ELEVATION OF MEDIAN BARRIER
(South face of Barrier shown, looking North)



REFLECTED INSIDE ELEVATION OF SOUTH PARAPET

MINIMUM BAR LAP
(Parapet)
#4 bar = 2'-11"
#8 bar = 7'-8"

NOTES

- * Longitudinal parapet dimensions taken along gutter line.
- ** Longitudinal barrier median dimensions taken along median centerline.

P:\1052200\20103003\cad\structural\045-0039_fina\00\1060133-e032-pp12.dgn
 6/14/2012 6:06:39 PM

USER NAME =	DESIGNED - R.K.-Z. 6/15/2012	REVISED -
	CHECKED - E.E.J. 6/15/2012	REVISED -
PLOT SCALE =	DRAWN - R.K.-Z. 6/15/2012	REVISED -
PLOT DATE =	CHECKED - E.E.J. 6/15/2012	REVISED -

F.A.P. RTE.	SECTION	COUNTY	TOTAL SHEETS	SHEET NO.
349	(10 & 11VB) R-3	KANE	507	253
ILLINOIS FED. AID PROJECT			CONTRACT NO. 60133	