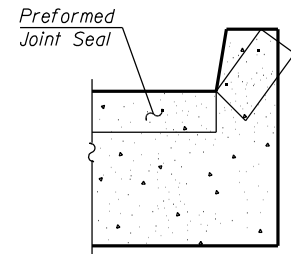
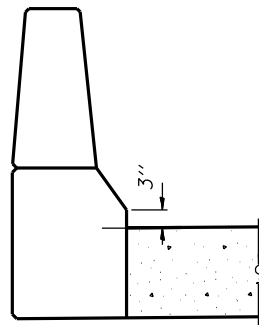


**TWO APPROACHES
BILL OF MATERIAL**

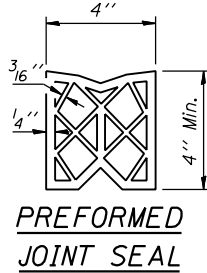
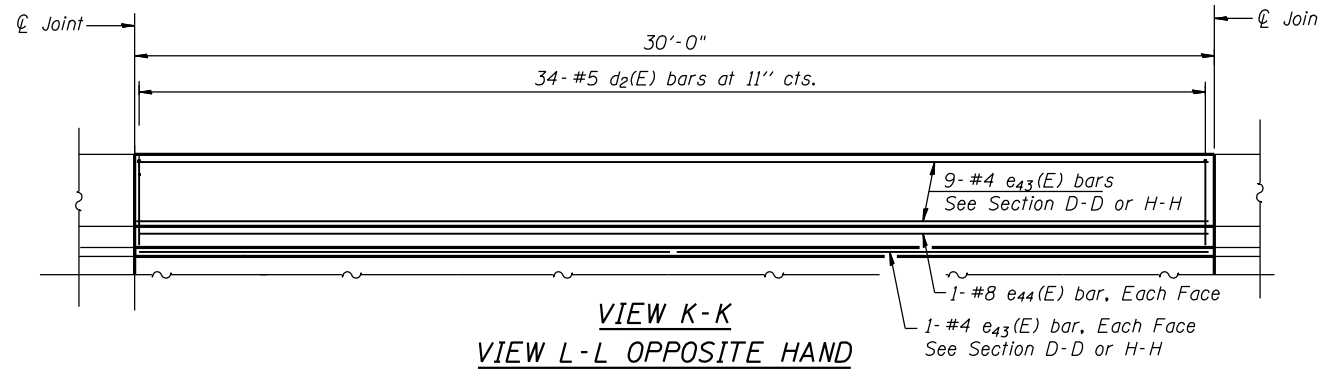
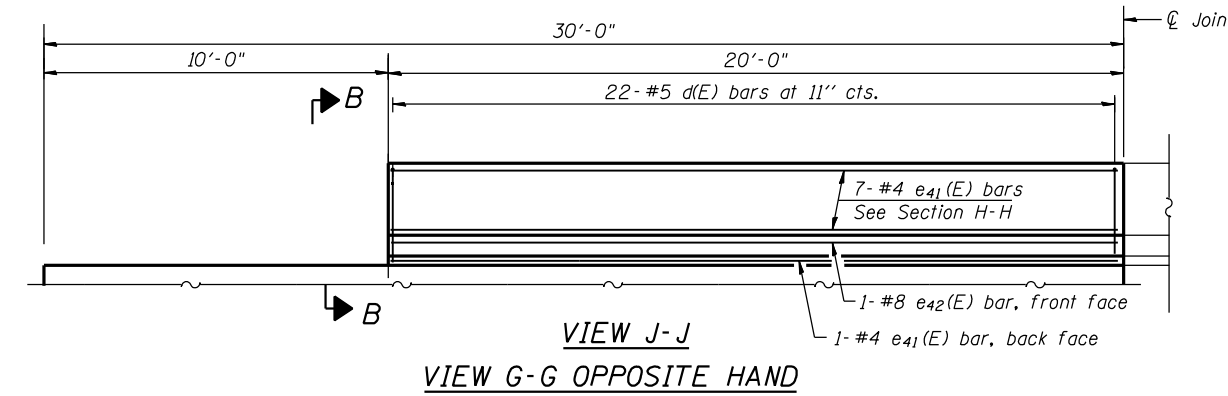
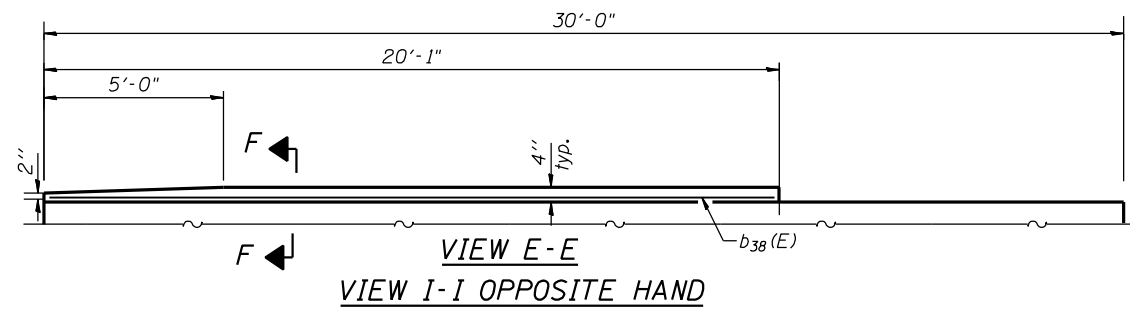
Bar	No.			Size	Length	Shape
	West	East	Total			
a55(E)	17	-	17	#4	20'-0"	
a56(E)	34	-	34	#4	19'-7"	
a57(E)	62	-	62	#5	28'-4"	
a58(E)	24	-	24	#4	19'-3"	
a59(E)	30	-	30	#5	27'-11"	
a60(E)	34	-	34	#4	18'-10"	
a61(E)	62	-	62	#5	27'-3"	
a62(E)	17	-	17	#4	19'-3"	
a63(E)	24	-	24	#4	18'-7"	
a64(E)	30	-	30	#5	26'-10"	
a65(E)	-	8	8	#4	34'-8"	
a66(E)	-	15	15	#5	34'-8"	
a67(E)	-	17	17	#4	36'-3"	
a68(E)	-	31	31	#5	36'-3"	
a69(E)	-	25	25	#4	31'-6"	
a70(E)	-	46	46	#5	31'-10"	
a71(E)	-	17	17	#4	19'-5"	
a72(E)	-	31	31	#5	19'-5"	
a73(E)	-	8	8	#4	17'-7"	
a74(E)	-	15	15	#5	17'-11"	
a75(E)	-	34	34	#6	6'-6"	
b35(E)	77	66	143	#4	29'-8"	
b36(E)	231	192	423	#9	29'-9"	
b37(E)	6	6	12	#9	19'-9"	
b38(E)	8	8	16	#4	19'-8"	
d(E)	-	44	44	#5	6'-10"	
d2(E)	33	33	66	#5	8'-5"	
d6(E)	-	44	44	#5	7'-11"	
d7(E)	33	33	66	#5	5'-6"	
e41(E)	-	16	16	#4	19'-8"	
e42(E)	-	2	2	#8	19'-8"	
e43(E)	11	11	22	#4	29'-8"	
e44(E)	2	2	4	#8	29'-8"	
t(E)	196	-	196	#4	10'-4"	
t1(E)	-	136	136	#4	9'-10"	
t2(E)	-	38	38	#4	9'-8"	
w(E)	40	-	40	#5	32'-0"	
w1(E)	80	-	80	#5	24'-8"	
w2(E)	40	-	40	#5	29'-10"	
w3(E)	-	40	40	#5	36'-3"	
w4(E)	-	40	40	#5	31'-10"	
w5(E)	-	40	40	#5	19'-8"	
Concrete Superstructure				Cu. Yd.	290.1	
Concrete Structures				Cu. Yd.	59.0	
Reinforcement Bars, Epoxy Coated				Pound	73,290	



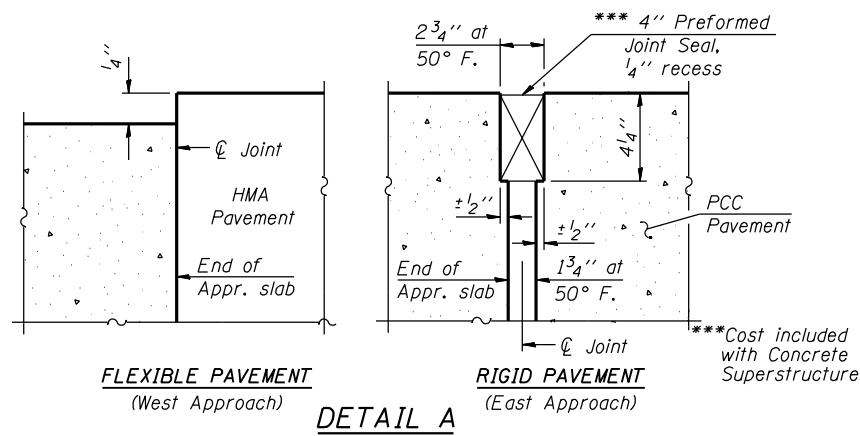
VIEW F-F
Angle Preformed Joint Seal at 45° at curbs when req'd for drainage.



VIEW B-B



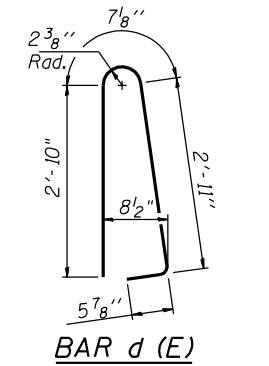
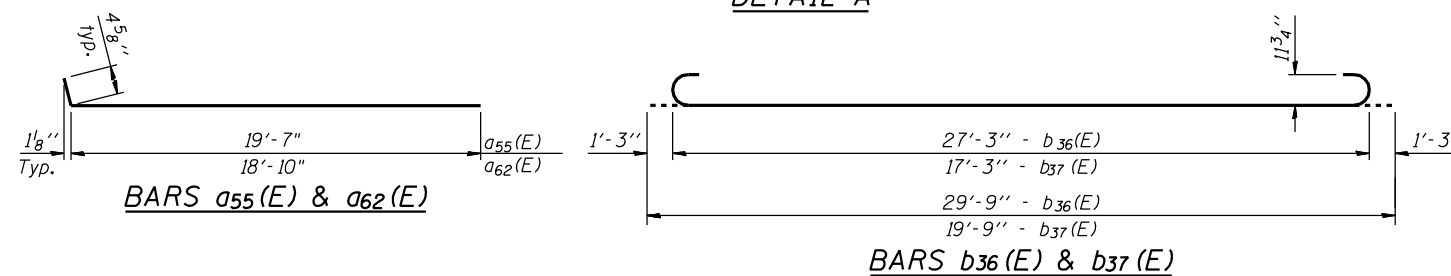
PREFORMED JOINT SEAL



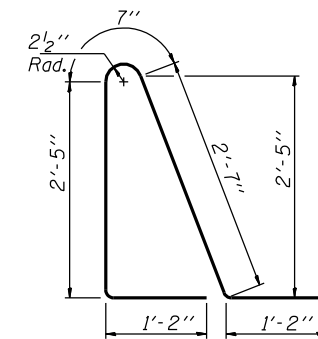
FLEXIBLE PAVEMENT
(West Approach)

RIGID PAVEMENT
(East Approach)

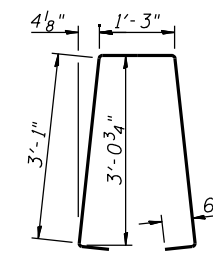
***Cost included with Concrete Superstructure.



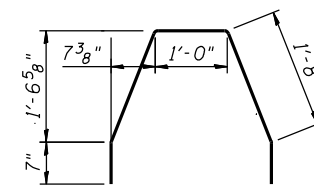
BAR d(E)



BAR d6(E)



BAR d2(E)



BAR d7(E)

NOTES:

- See Sheets S39 for Views E-E, I-I, J-J, G-G, K-K and L-L.
- Approach slab and parapet concrete shall be paid for as Concrete Superstructure.
- Approach footing concrete shall be paid for as Concrete Structures.
- Reinforcement shall be paid for as Reinforcement Bars, Epoxy Coated.
- The approach footing maximum applied service bearing pressure (Qmax) = 2.0 ksf.
- For bar splicer details, see Sheet S86.
- Cost of excavation for approach footing included with Concrete Structures.
- For Porous Granular Embankment (Special) and drainage treatment details, see Sheet S62.
- For additional parapet details, see Sheet S40.

P:\10522010\20103003\cadd\structure\adgn\045-0039_find\00.D160133-e041-appr-det2.dgn
 6/14/2012 6:07:20 PM

USER NAME =	DESIGNED - R.K.-Z. 6/15/2012	REVISED -
CHECKED - E.E.J. 6/15/2012	REVISED -	
PLOT SCALE =	DRAWN - R.K.-Z. 6/15/2012	REVISED -
PLOT DATE =	CHECKED - E.E.J. 6/15/2012	REVISED -

F.A.P. RTE. 349	SECTION (10 & 11VB) R-3	COUNTY KANE	TOTAL SHEETS 507	SHEET NO. 262
CONTRACT NO. 60133			ILLINOIS FED. AID PROJECT	