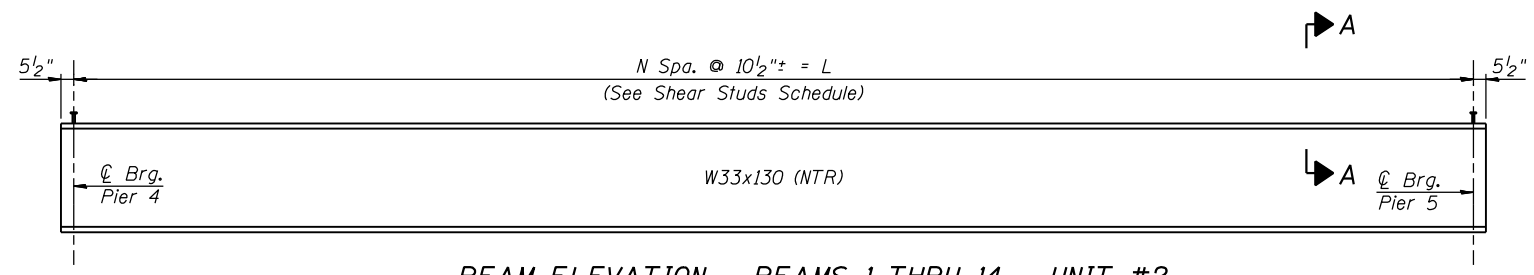


BEAM ELEVATION - BEAMS 11 THRU 14 AT UNIT #1



BEAM ELEVATION - BEAMS 1 THRU 14 - UNIT #2

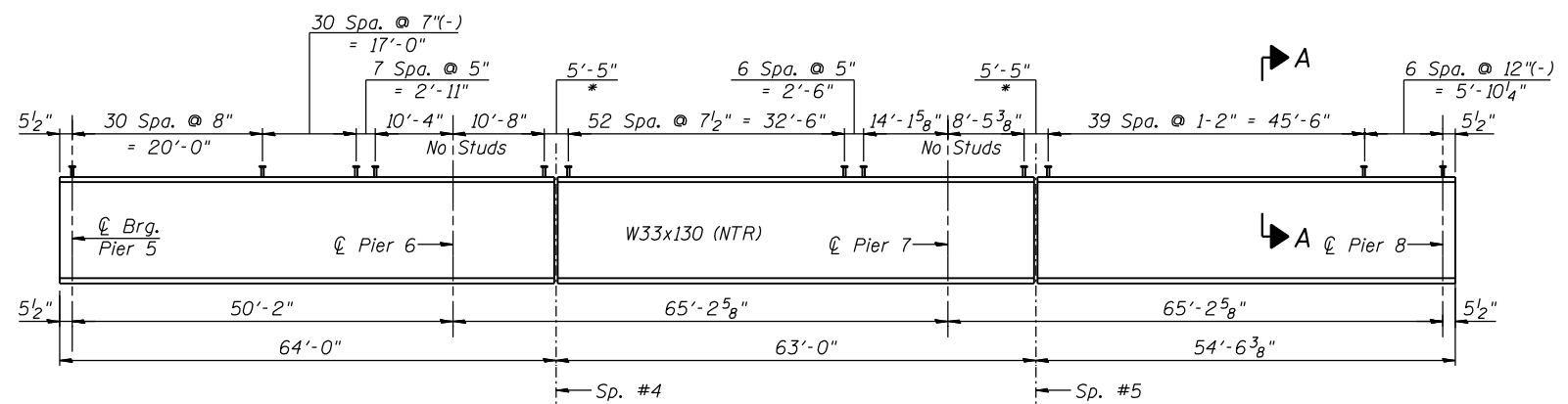
SHEAR STUDS SCHEDULE - UNIT #2

Beam Line	L	N
11	10'-1"	12
12	14'-0 1/2"	17
1	17'-8 7/8"	21
2	21'-5 1/4"	25
3	25'-1 3/4"	29
4	28'-10 7/8"	33
5	32'-6 1/2"	38
6	34'-5 1/2"	40
7	38'-1 7/8"	44
8	41'-10 3/8"	48
9	45'-6 5/8"	53
10	49'-3 3/8"	57
13	51'-10"	60
14	54'-7 7/8"	63

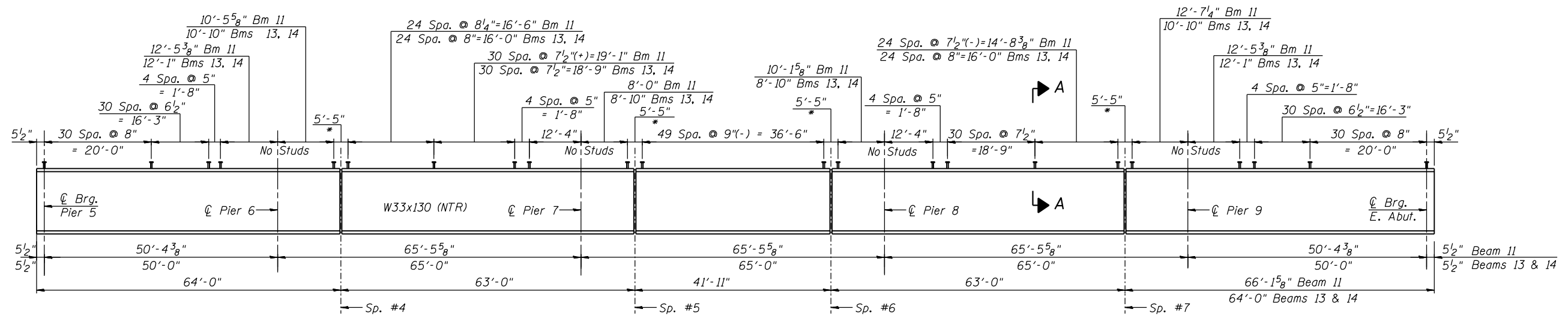
- NOTES**
1. Work this sheet with Sheets S42 thru S45 and S47 thru S50.
 2. Load carrying components designated "NTR" shall conform to the Impact Testing Requirement, Zone 2.
 3. *For studs at field splices see Splice Details on Sheet S47.

BILL OF MATERIAL

Item	Unit	Total
Stud Shear Connectors	Each	24,185



BEAM ELEVATION - BEAM 12 - UNIT #3



BEAM ELEVATION - BEAMS 11, 13, & 14 AT UNIT #3

P:\105200\20103033\cadd\structural\dm\045-0039.fina\00.D160133-s046-new-bm-elev.dgn
 6/14/2012 6:07:37 PM



USER NAME =	DESIGNED - J.Z. 6/15/2012	REVISED -
PLOT SCALE =	CHECKED - E.E.J. 6/15/2012	REVISED -
PLOT DATE =	DRAWN - E.E.J. 6/15/2012	REVISED -
	CHECKED - J.Z. 6/15/2012	REVISED -

STATE OF ILLINOIS
DEPARTMENT OF TRANSPORTATION

NEW BEAM ELEVATIONS
STRUCTURE NO. 045-0039
SHEET NO. S46 OF 116 SHEETS

F.A.P. RTE. 349	SECTION (10 & 11VB) R-3	COUNTY KANE	TOTAL SHEETS 507	SHEET NO. 267
CONTRACT NO. 60133			ILLINOIS FED. AID PROJECT	