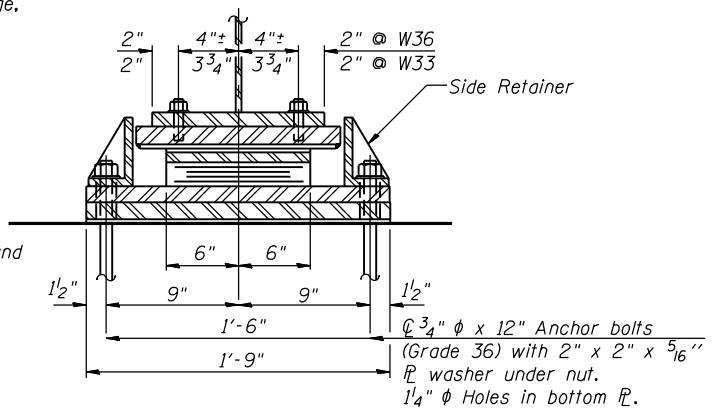
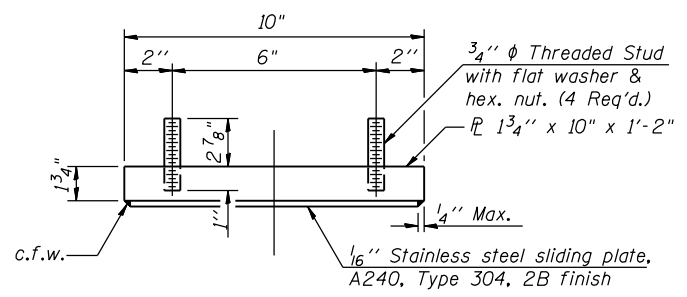


ELEVATION

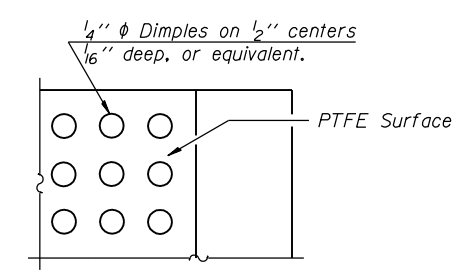


SECTION A-A

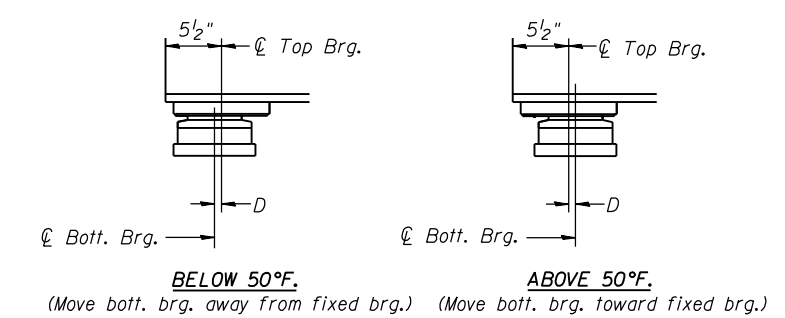
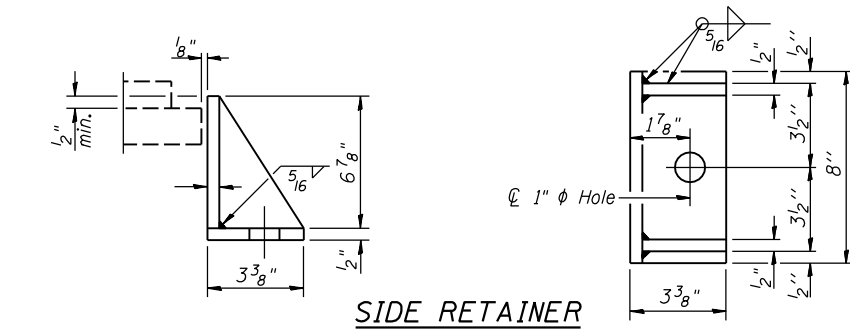
TYPE 'C' BEARING (TYPE II ELASTOMERIC EXP. BRG.)
(21 Required)



TOP BEARING ASSEMBLY

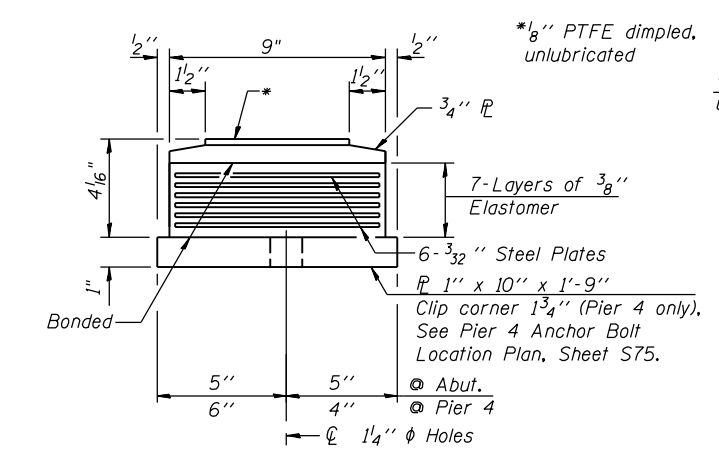


PLAN-PTFE SURFACE

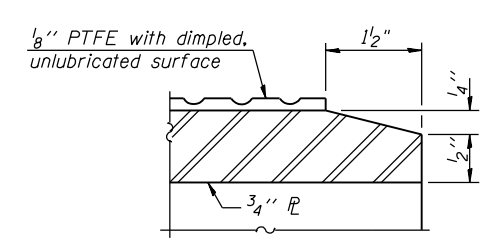


SETTING ANCHOR BOLTS AT EXP. BRG.

D=1/8" per each 100' of expansion for every 15° temp. change from the normal temp. of 50°F.



BOTTOM BEARING ASSEMBLY



SECTION THRU PTFE

BILL OF MATERIAL

Item	Unit	Total
Elastomeric Bearing Assembly, Type II	Each	21
Anchor Bolts, 3/4"	Each	42

NOTES

- Anchor bolts shall be ASTM F1554 all-thread (or an Engineer-approved alternate material) of the grade(s) and diameter(s) specified. ASTM A307 Grade C anchor bolts may be used in lieu of ASTM F1554 Grade 36 (Fy=36ksi). The corresponding specified grade of AASHTO M314 anchor bolts may be used in lieu of ASTM F1554.
- Anchor bolts for Type II bearings shall be placed in holes drilled in the concrete through holes in the bottom bearing plate after members are in place. Side retainers shall be placed after bolts are installed.
- Drilled and set anchor bolts shall be installed according to Article 521.06 of the Standard Specifications.
- Side retainers and other steel members required for the elastomeric bearing assembly shall be included in the cost of Elastomeric Bearing Assembly, Type II.
- The 1/8" PTFE sheet shall be bonded directly to the top steel plate with a two-component, medium viscosity epoxy resin, conforming to the requirements of the Federal Specification MMM-A-134, Type I. The bond agent shall be applied on the full area of the contact surfaces.
- Bonding of 1/8" PTFE sheet during vulcanizing process will be permitted provided the process and method of adjusting assembly height is approved by the Engineer.
- The existing type II elastomeric bearings at Pier 4 are to be removed completely from the bottom flange of the existing beams using air-arc method without damaging the flanges and grind smooth all weld material remaining on the existing bottom flange, and to be replaced with Type II Elastomeric Bearing using bolt connections.
- The structural steel plates of the Bearing Assembly shall conform to the requirements of AASHTO M 270 Grade 50.
- Two 1/8 in. adjusting shims shall be provided for each bearing in addition to all other plates or shims and placed as shown on bearing details.
- See Key Bridge Bearing Types on Sheet S51 for locations of Types 'C' bearing.

H:\jbs2010\20103003\CAD\Structural\dgn\045-0039.Find\00.D160333-e052-el-brg-type2.dgn 11/21/21 AM 6/26/2012