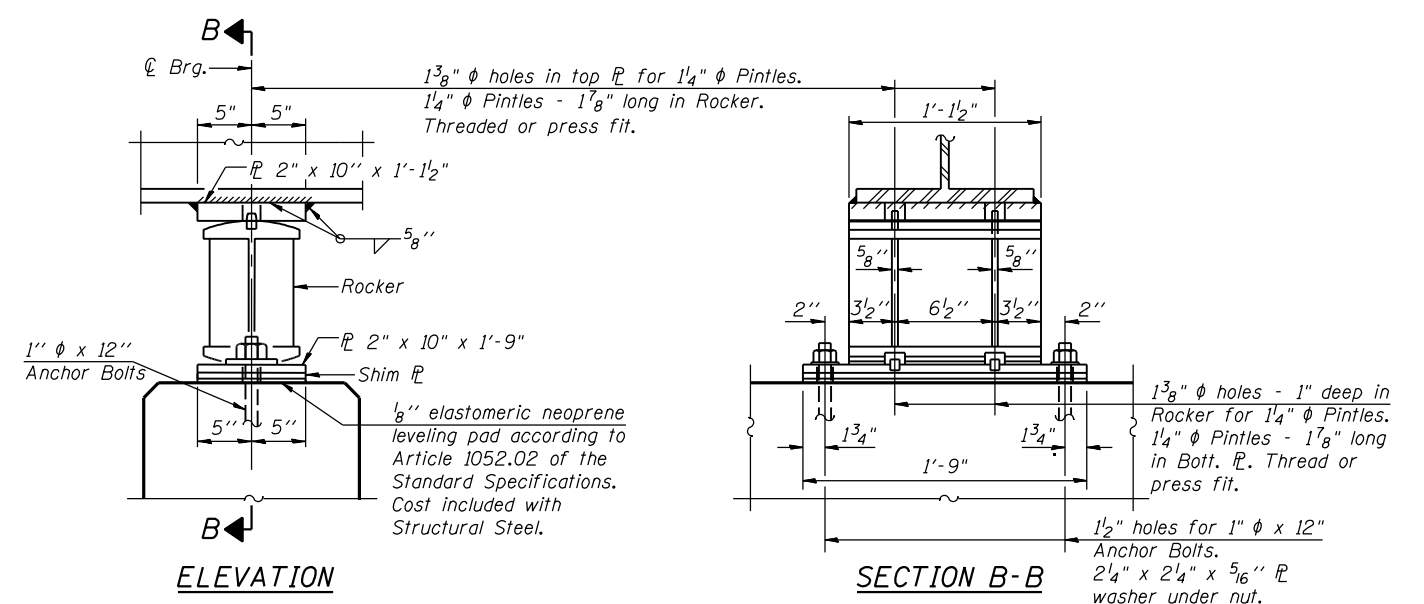


ELEVATION

SECTION A-A

**TYPE 'F-X' BEARINGS AT EXISTING BEAMS 1 & 10
(STEEL ROCKER EXPANSION BEARING)**

(4 Required)

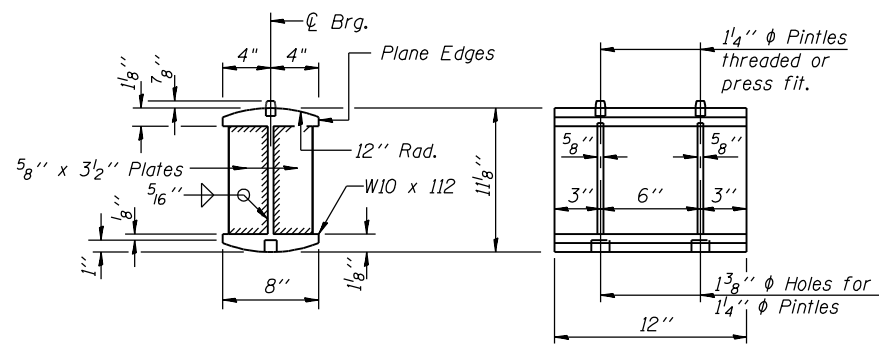


ELEVATION

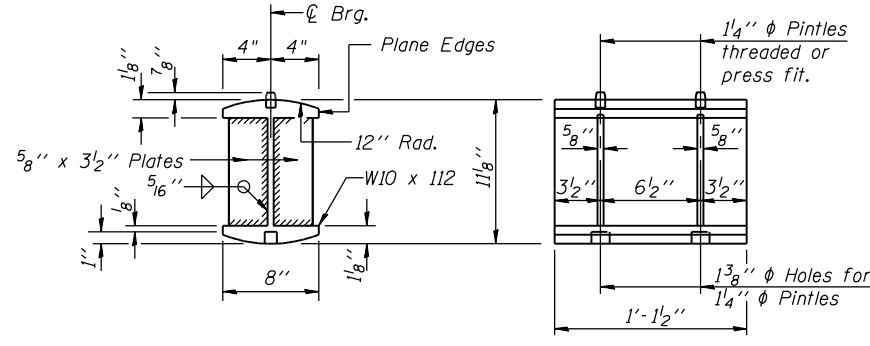
SECTION B-B

**TYPE 'F-N' BEARINGS AT NEW BEAMS 11 THRU 14
(STEEL ROCKER EXPANSION BEARING)**

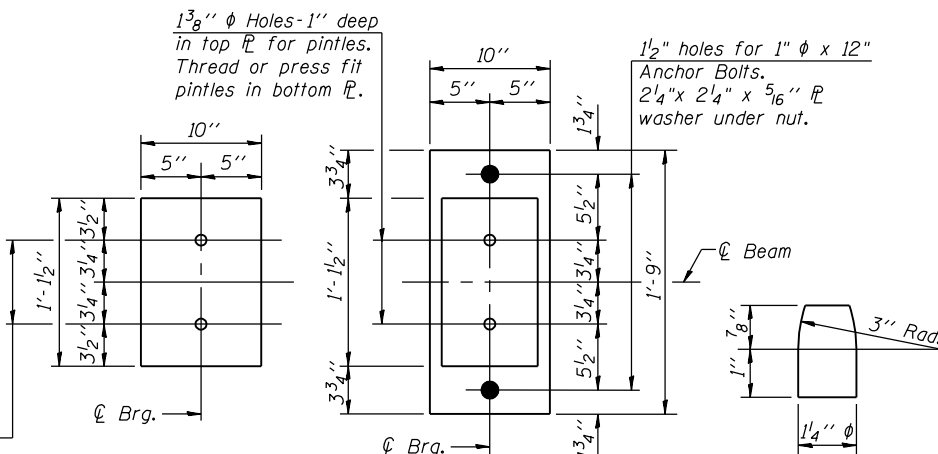
(8 Required)



DETAIL OF ROCKER



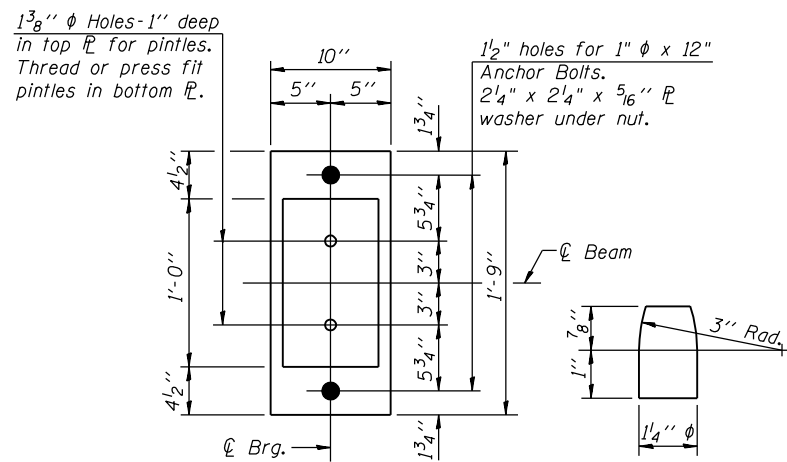
DETAIL OF ROCKER



TOP PLATE

BOTTOM PLATE

DETAIL OF PINTLE



BOTTOM PLATE

DETAIL OF PINTLE

BILL OF MATERIAL

Item	Unit	Total
Anchor Bolts, 1"	Each	24

NOTES

- Anchor bolts shall be ASTM F1554 all-thread (or an Engineer-approved alternate material) of the grade(s) and diameter(s) specified. ASTM A307 Grade C anchor bolts may be used in lieu of ASTM F1554 Grade 36 (Fy=36ksi). The corresponding specified grade of AASHTO M314 anchor bolts may be used in lieu of ASTM F1554.
- Drilled and set anchor bolts shall be installed according to Article 521.06 of the Standard Specifications.
- The structural steel plates of the Bearing Assembly shall conform to the requirements of AASHTO M 270 Grade 50.
- Replace the existing rocker bearings at Beams 1 & 10 except for the top plates of the existing assemblies.
- Two 1/8 in. adjusting shims shall be provided for each bearing in addition to all other plates or shims and placed as shown on bearing details.
- Type '-X' refers to rocker bearings at existing beams, while Type '-N' refers to rocker bearings at new beams. See Key Bridge Bearing Types on Sheet S51 for Locations of Bearing Type 'F'.
- * One additional 1/4" fill plate required at Pier 3, Beam 1, and one additional 1/4" fill plate required at Pier 3, Beam 10.

H:\Jobs\2010\201030303\CAD\Structural\dwg\045-0039.Final\001\060133-e0564-ctr-brg-f.dgn
 6/26/2012 11:21:50 AM

USER NAME =	DESIGNED - J.Z. 6/25/2012	REVISED -
PLOT SCALE =	CHECKED - E.E.J. 6/25/2012	REVISED -
PLOT DATE =	DRAWN - E.U.B. 6/25/2012	REVISED -
	CHECKED - J.Z. 6/25/2012	REVISED -

F.A.P. RTE.	SECTION	COUNTY	TOTAL SHEETS	SHEET NO.
349	(10 & 11VB) R-3	KANE	507	275
CONTRACT NO. 60133				