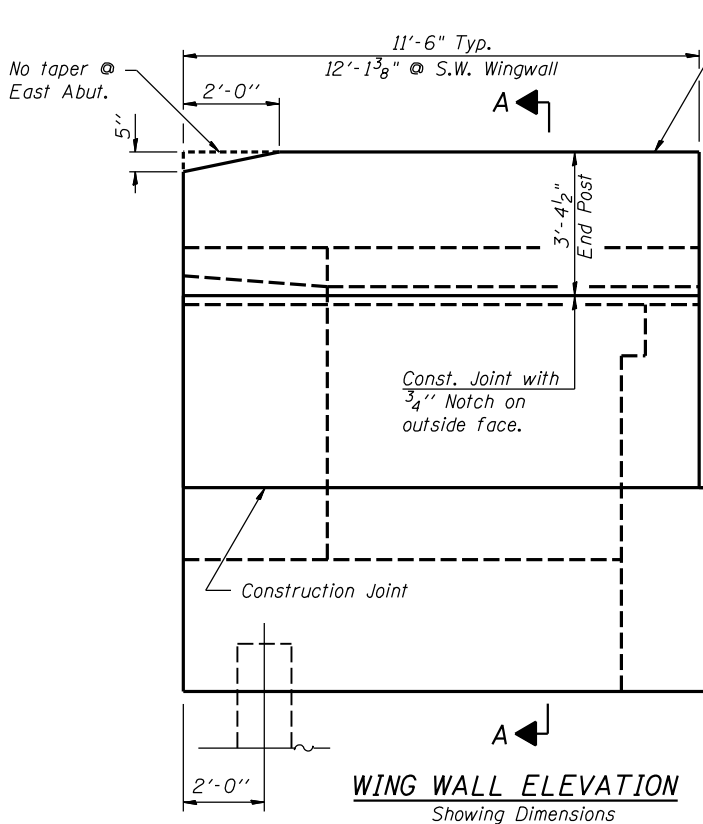
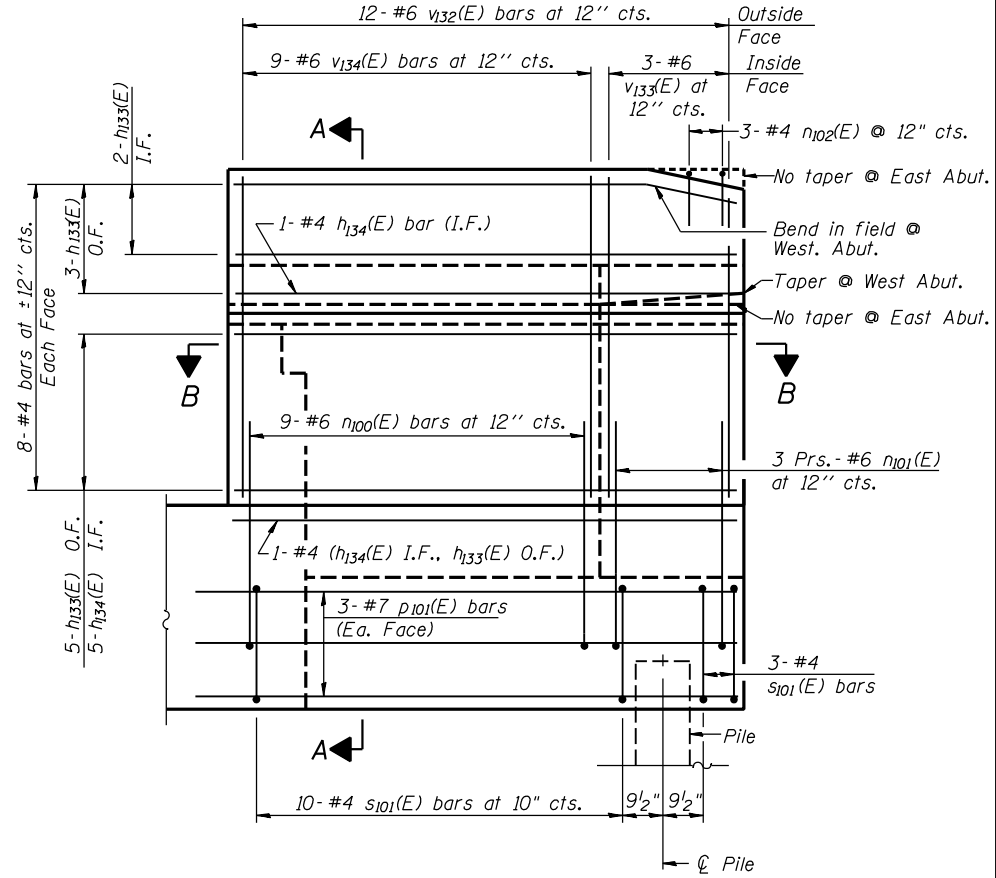


SECTION A-A

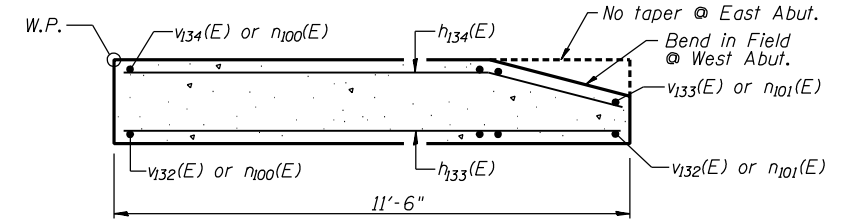


WING WALL ELEVATION
Showing Dimensions

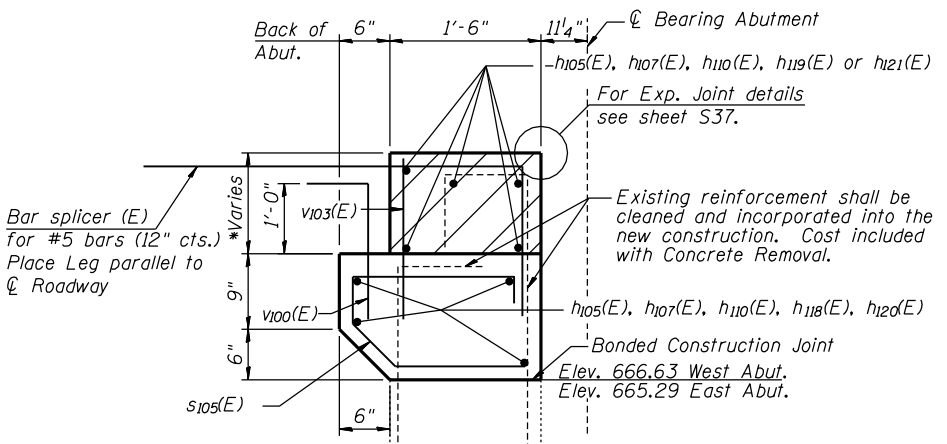
	X	Y	Z
N.W. Wingwall	4'-4 3/4"	4'-4 3/8"	8'-9 7/8"
S.W. Wingwall	4'-1"	4'-5 7/8"	8'-6 7/8"
N.E. Wingwall	4'-8 1/4"	4'-1 3/8"	8'-9 5/8"
S.E. Wingwall	4'-3 7/8"	4'-1 5/8"	8'-5 1/2"



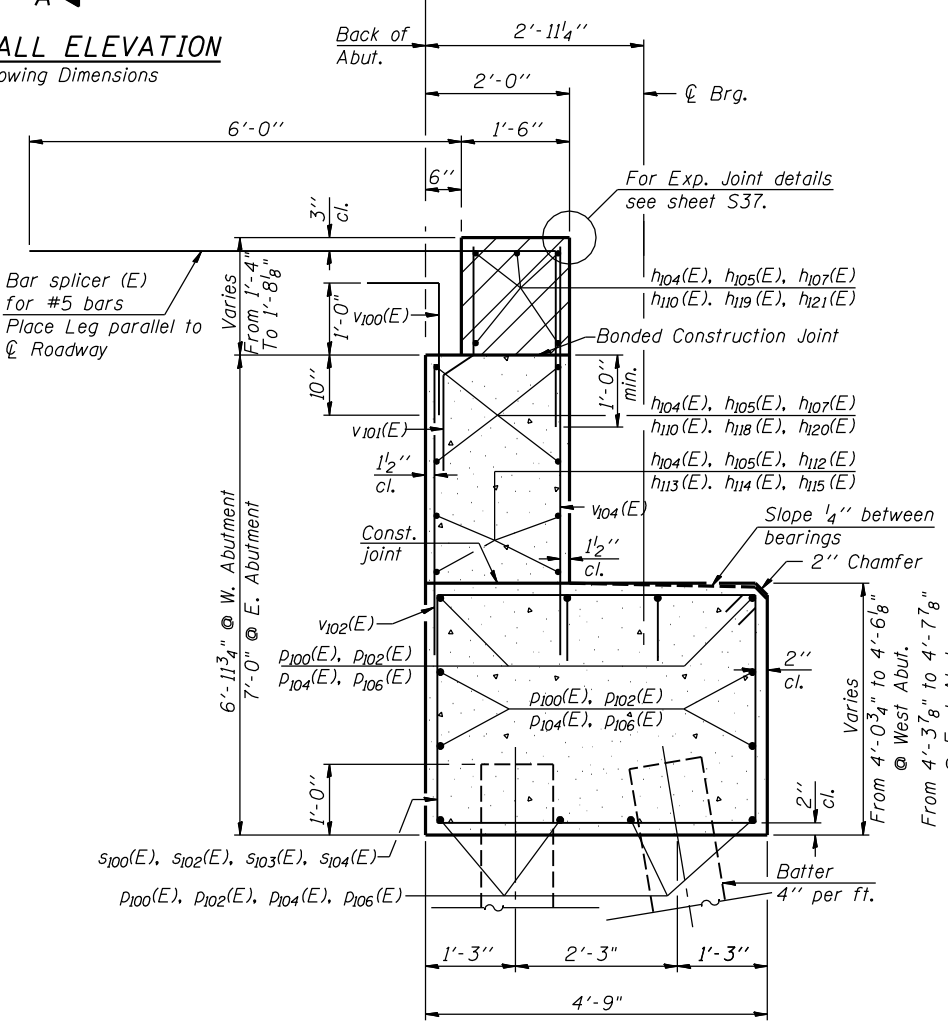
WING WALL ELEVATION
Showing Reinforcement



SECTION B-B



SECTION THRU MODIFIED EXISTING ABUTMENT



SECTION THRU ABUTMENT EXTENSIONS
(Showing Reinforcement)

NOTES:

1. Reinforcement bars designated (E) shall be epoxy coated
2. Quantity of concrete in end post included with Concrete Superstructure on sheet S36.
3. For Concrete Encasement details, see sheet S85.
4. Hatched area to be poured after superstructure false work has been removed. Quantity of concrete included with Concrete Superstructure.

PILE DATA

Pile Type and Size: Metal Shell 14" dia. x 1/4" Walls
 Nominal Required Bearing: 297 kips @ East Abut., 328 kips @ West Abut.
 Allowable Resistance Available: 138 kips
 Estimated Pile Length: 24 Ft. @ East Abut.
 13 Ft. @ West Abut.
 Number Required: 8 + 2 Test Piles @ East Abutment
 14 + 2 Test Piles @ West Abutment

H:\jbs2010\20103033\CAD\Structure\dwg\045-0039-Find\00.D16033-s060-abut-dt.dgn
 6/26/2012 11:23:03 AM

USER NAME	DESIGNED	REVISION
M.A.D.	6/25/2012	
D.F.W.	6/25/2012	
E.E.J.	6/25/2012	
J.A.Z.	6/25/2012	

F.A.P. RTE.	SECTION	COUNTY	TOTAL SHEETS	SHEET NO.
349	(10 & 11VB) R-3	KANE	507	281
				CONTRACT NO. 60133