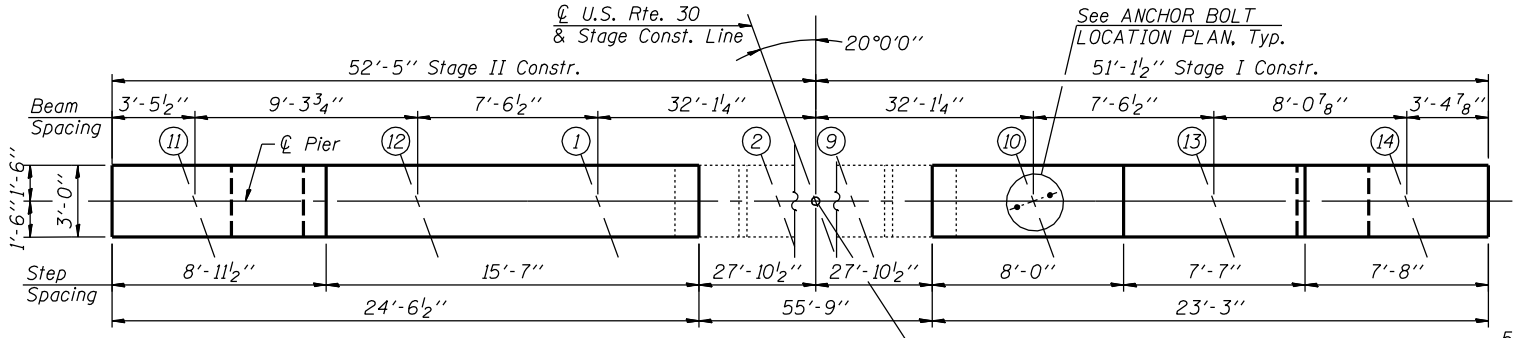
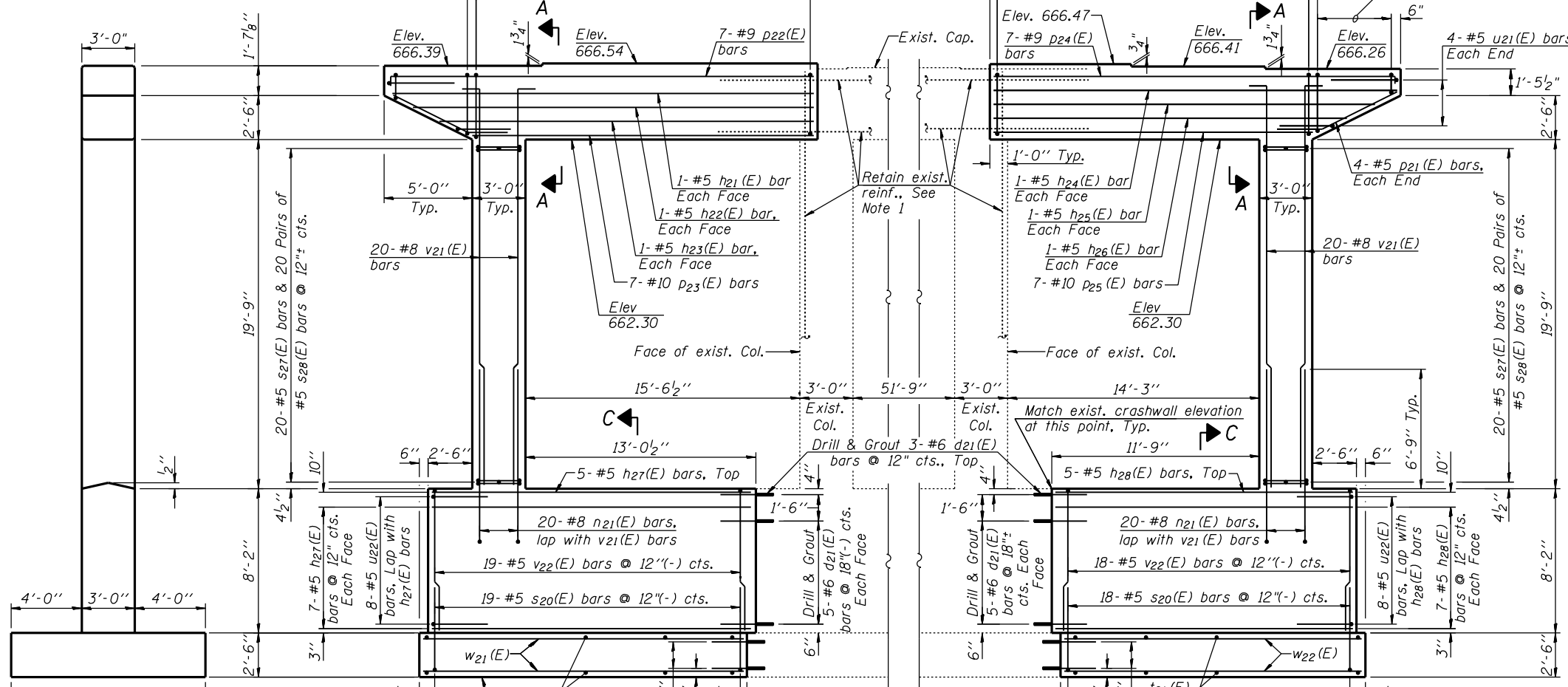


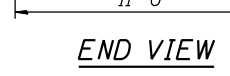
ANCHOR BOLT LOCATION PLAN
(Beams 11, 12, 1, 10, 13 & 14)



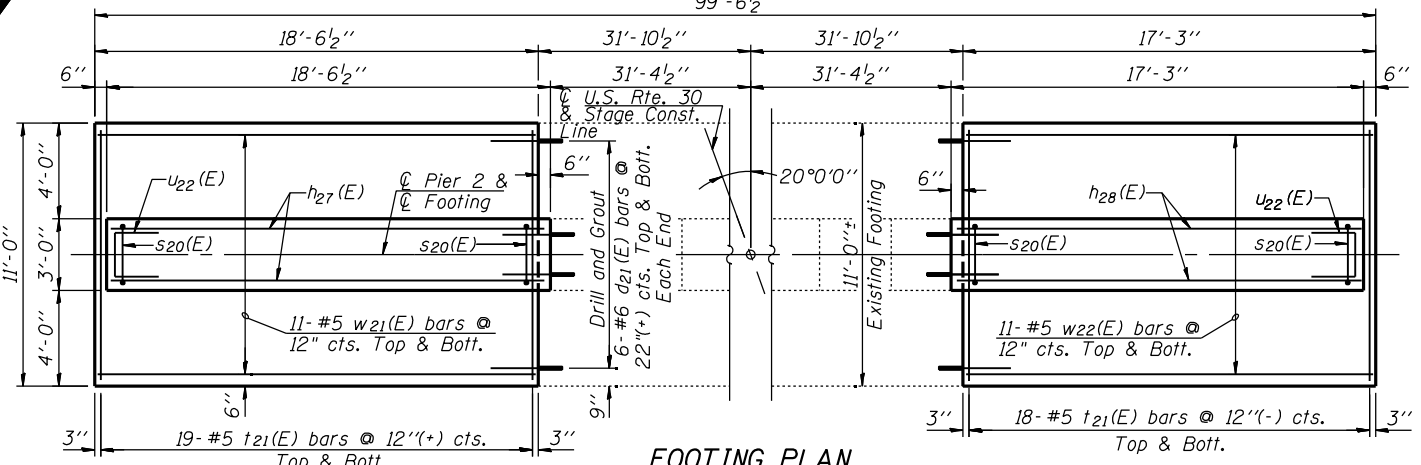
TOP PLAN



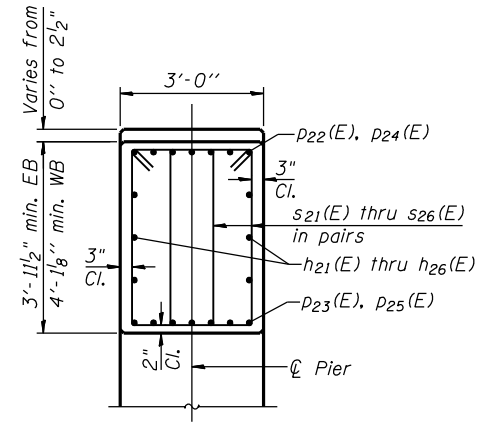
PIER 2 ELEVATION
(Looking East)



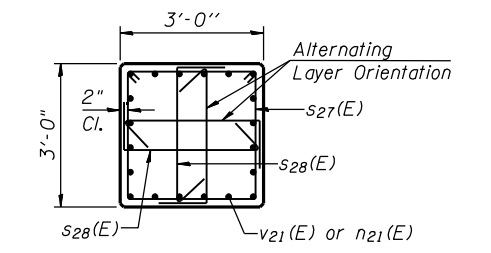
END VIEW



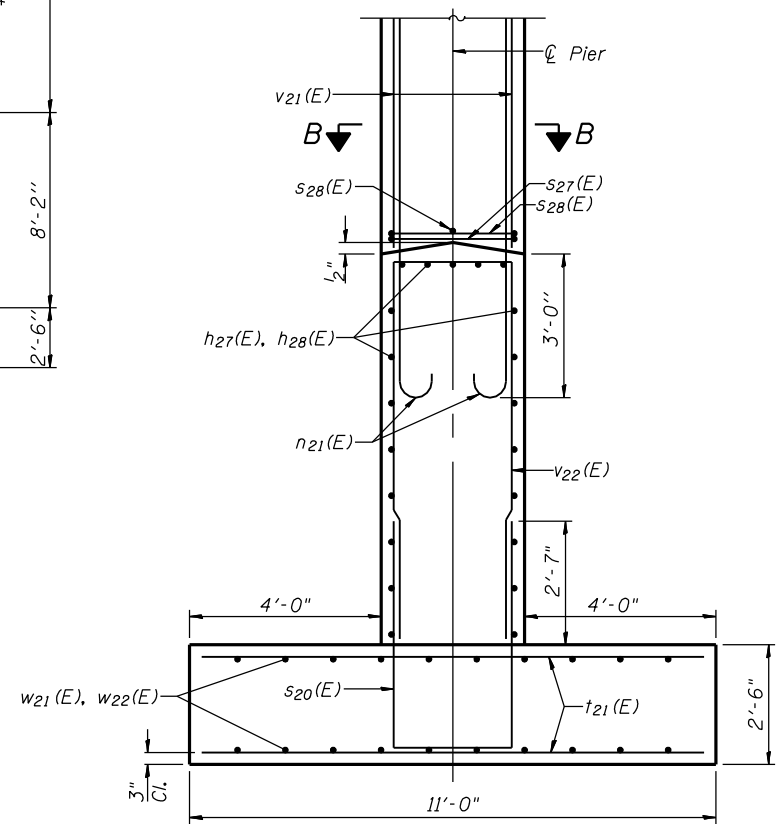
FOOTING PLAN



SECTION A-A



SECTION B-B



SECTION C-C

NOTES:

- Existing reinforcement shall be cleaned, straightened and incorporated into the new construction. Cost included with "Concrete Removal".
- See Sheet S73 for reinforcement details.
- Space reinforcement in cap to miss anchor bolts.
- Pour steps monolithically with cap.
- Embedment depth for #6 bars drilled & grouted is 9".
- Maximum applied service load soil bearing pressure is 4,000 psf.

H:\p2\2010\20103031\CAD\Structural\dgn\045-0039_Final\001033-s07r-pier-2.dgn
6/28/2012 10:23:50 AM

USER NAME =	DESIGNED - J.Z. 6/25/2012	REVISED -
PLOT SCALE =	CHECKED - J.J.G. 6/25/2012	REVISED -
PLOT DATE =	DRAWN - E.U.B. 6/25/2012	REVISED -
	CHECKED - J.Z. 6/25/2012	REVISED -

F.A.P. RTE. 349	SECTION (10 & 11VB) R-3	COUNTY KANE	TOTAL SHEETS 507	SHEET NO. 292
CONTRACT NO. 60133				ILLINOIS FED. AID PROJECT