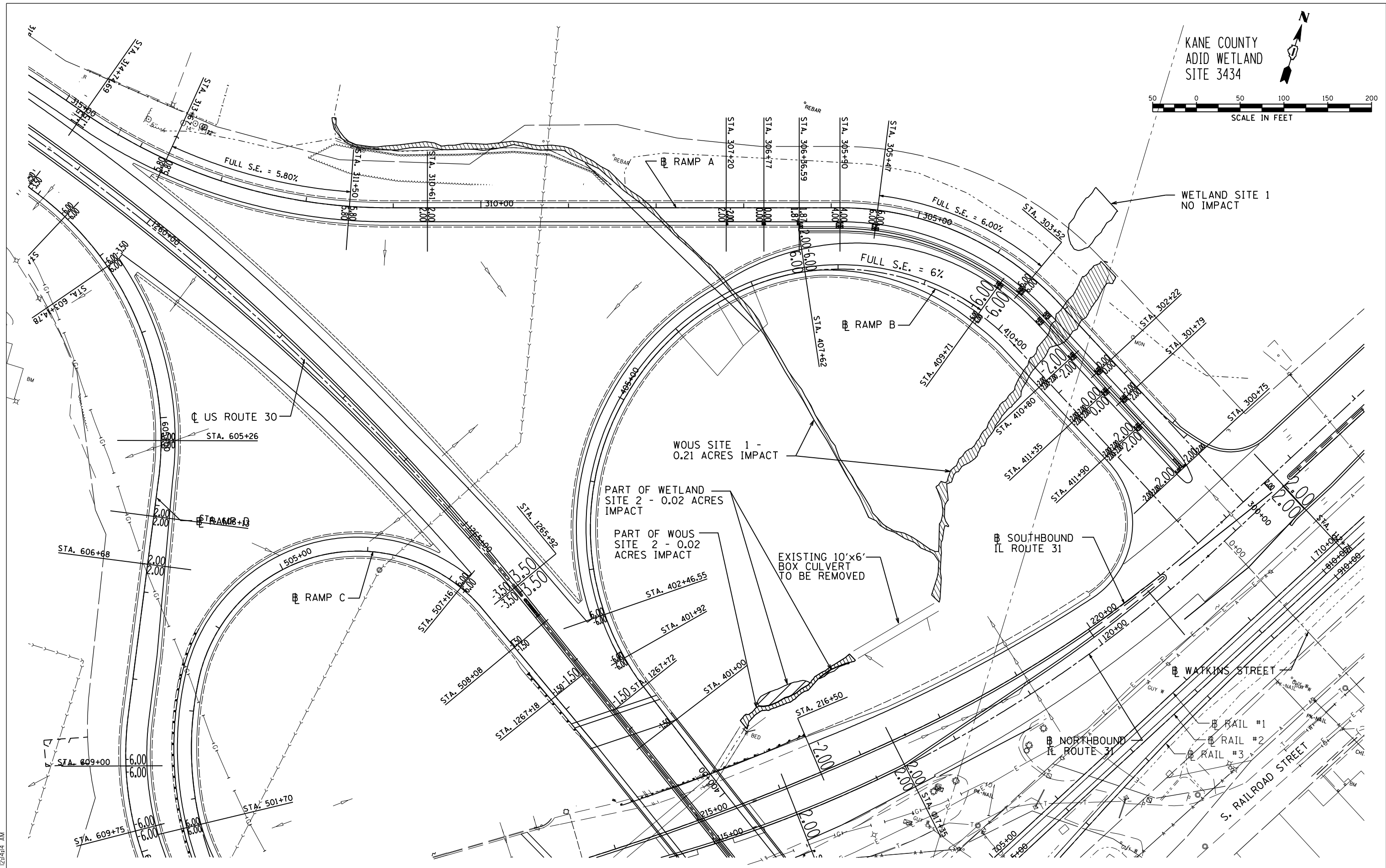
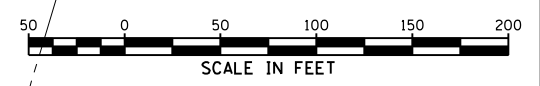


KANE COUNTY
ADID WETLAND
SITE 3434



5/16/2012 12:44:44 AM
 8/16/2012

USER NAME = 1654	DESIGNED - JWB	REVISED -
	DRAWN - JWB	REVISED -
PLOT SCALE = 100.0000' / IN.	CHECKED - RS	REVISED -
PLOT DATE = 5/16/2012	DATE - 05/11/2012	REVISED -

**STATE OF ILLINOIS
DEPARTMENT OF TRANSPORTATION**

**U.S. ROUTE 30 AT IL ROUTE 31
SUPERELEVATION PLAN - RAMP A AND RAMP B**

SCALE: 1"=50' SHEET NO. --

(RAMP A) STA. 300+00 TO STA. 314+75
(RAMP B) STA. 400+00 TO STA. 413+34

F.A.P. RTE.	SECTION	COUNTY	TOTAL SHEETS	SHEET NO.
349	(10 & 11 VB) R-3	-	507	369
KANE AND KENDALL			CONTRACT NO. 60133	
ILLINOIS FED. AID PROJECT				