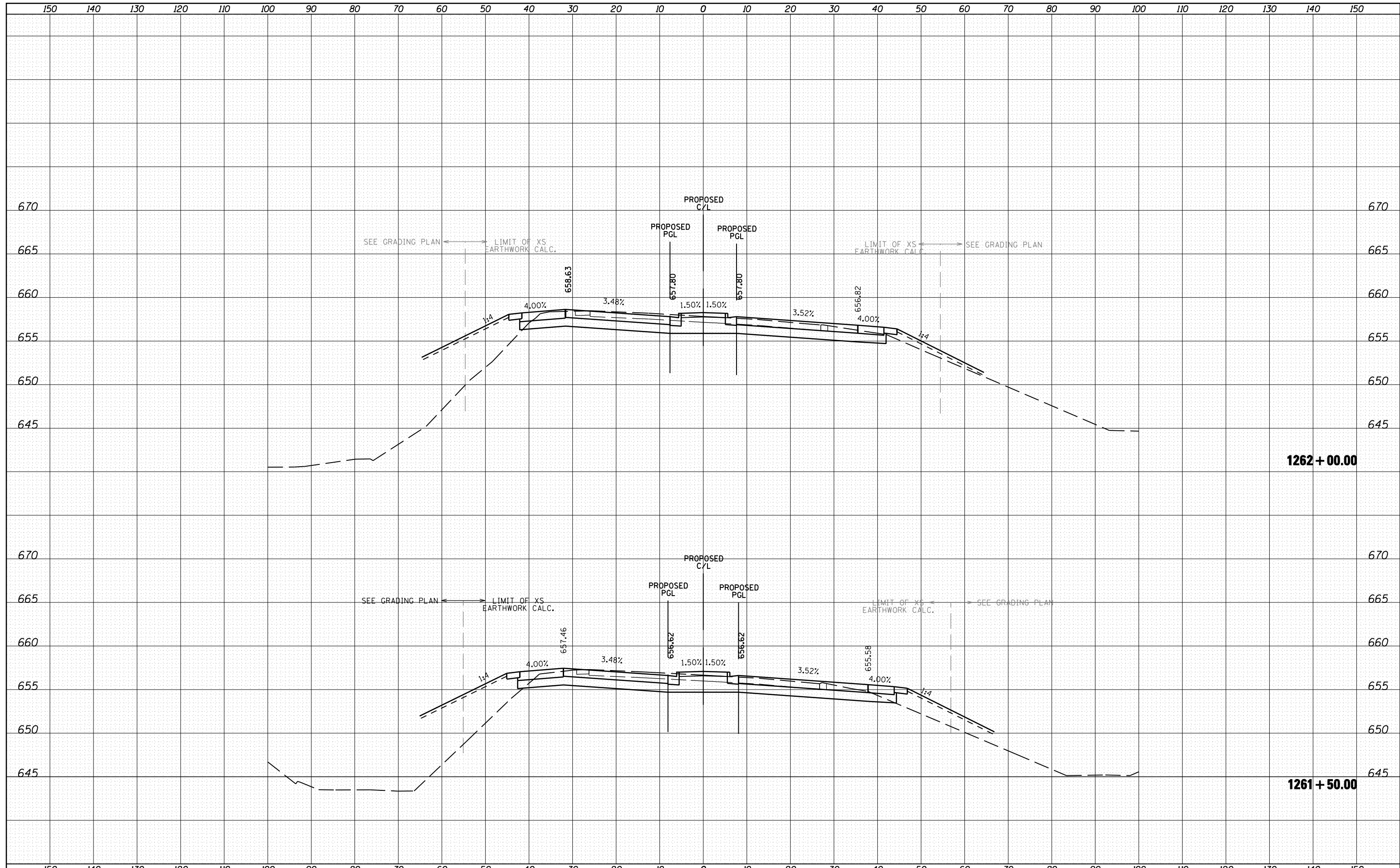


DATE	
BY	
SURVEYED	
PLOTTED	
TEMPLATE	
AREAS	
CHECKED	
FINAL SURVEY	
NOTE BOOK	
NO.	

DATE	
BY	
SURVEYED	
PLOTTED	
TEMPLATE	
AREAS	
CHECKED	
ORIGINAL SURVEY	
NOTE BOOK	
NO.	



FILE NAME =	USER NAME = 1654	DESIGNED - NGS	REVISED -	STATE OF ILLINOIS DEPARTMENT OF TRANSPORTATION	U.S. ROUTE 30 AT IL ROUTE 31 CROSS SECTIONS - U.S. ROUTE 30	F.A. RTE.	SECTION	COUNTY	TOTAL SHEETS	SHEET NO.
ht:\jobs\2010\20103003\cod\site\dgn\refs\US-30\060133-sht-US30-xsec.dgn	DRAWN - NGS	REVISED -	349			(10 & 11 VB) R-3	*	507	411	
PLOT SCALE = 20.0000' / IN.	CHECKED - RS	REVISED -	* KANE AND KENDALL			CONTRACT NO. 60133				
PLOT DATE = 5/16/2012	DATE - 05/11/2012	REVISED -	ILLINOIS FED. AID PROJECT							
				SCALE:		SHEET NO. 26 OF 41 SHEETS		STA. 1261+50.00 TO STA. 1262+00.00		