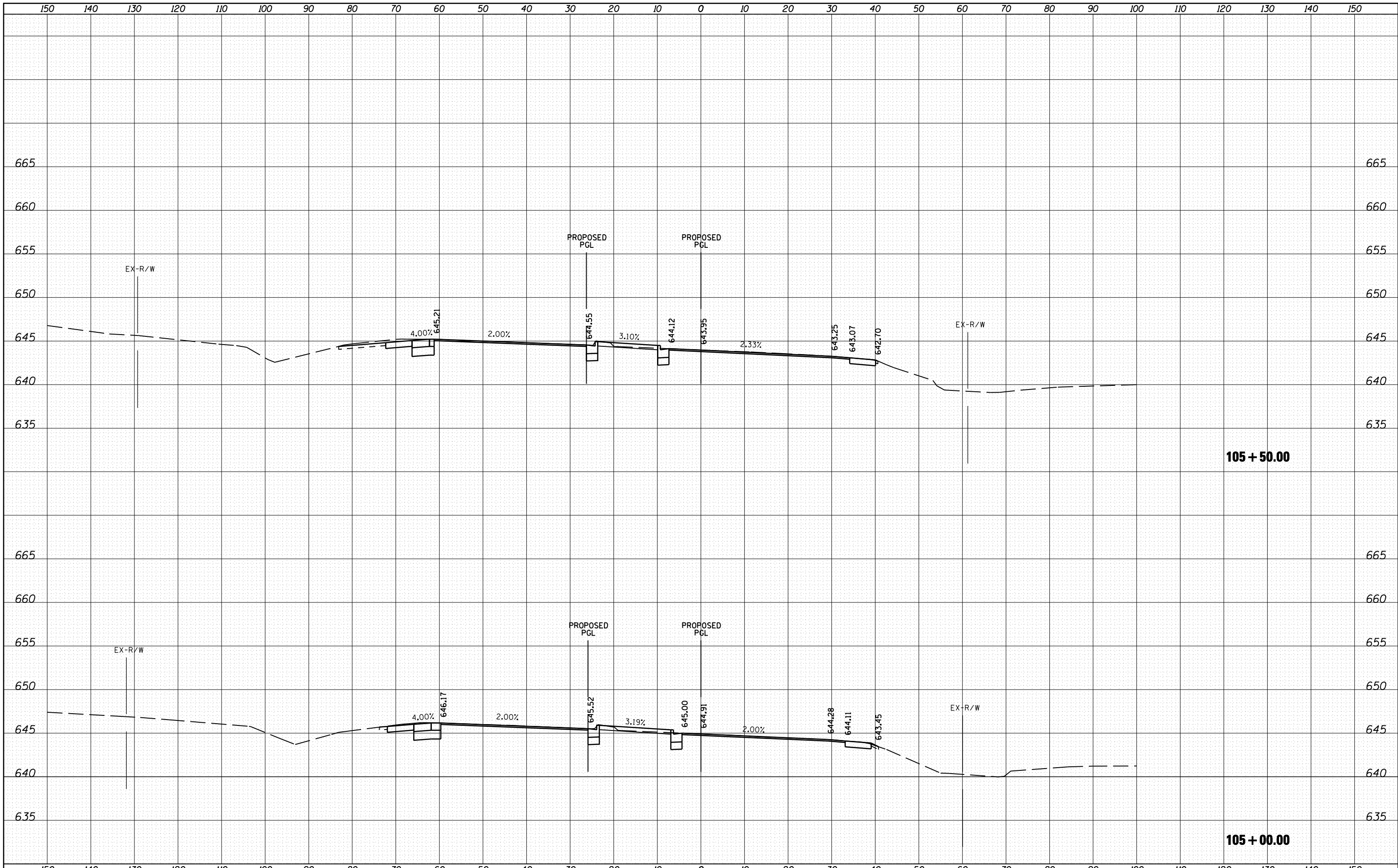


FINAL SURVEY	SURVEYED	DATE
NOTE BOOK	PLOTTED	BY
NO.	TEMPLATE	
	AREAS CHECKED	

ORIGINAL SURVEY	SURVEYED	DATE
NOTE BOOK	PLOTTED	BY
NO.	TEMPLATE	
	AREAS CHECKED	



FILE NAME =	USER NAME = 1654	DESIGNED - NGS	REVISED -
ht:\jobs\2010\20103003\cod\site\dgn\refs\IL-31\10133-sh.t..IL31-xsec-NB.dgn		DRAWN - NGS	REVISED -
		CHECKED - RS	REVISED -
		DATE - 05/11/2012	REVISED -

**STATE OF ILLINOIS
DEPARTMENT OF TRANSPORTATION**

**U.S. ROUTE 30 AT IL ROUTE 31
CROSS SECTIONS - IL ROUTE 31**

SCALE: SHEET NO. 8 OF 39 SHEETS STA. 105+00.00 TO STA. 105+50.00

F.A. RTE.	SECTION	COUNTY	TOTAL SHEETS	SHEET NO.
349	(10 & 11 VB) R-3	*	507	434
* KANE AND KENDALL			CONTRACT NO. 60133	
ILLINOIS FED. AID PROJECT				