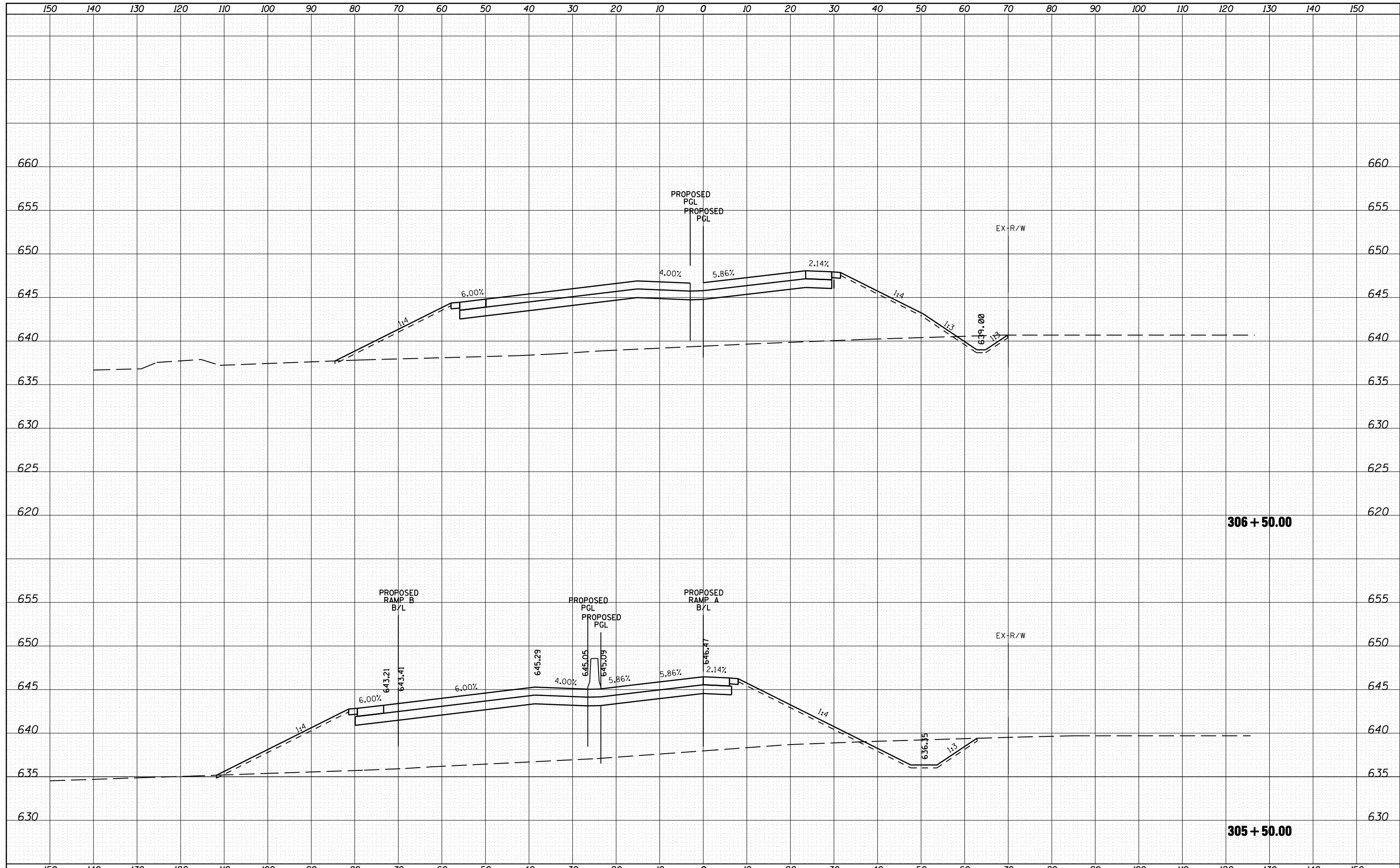


DATE	
BY	
SURVEYED	
PLOTTED	
TEMPLATE	
AREAS	
CHECKED	
FINAL SURVEY NO.	
NOTE BOOK NO.	
AREAS CHECKED	

DATE	
BY	
SURVEYED	
PLOTTED	
TEMPLATE	
AREAS	
CHECKED	
ORIGINAL SURVEY NO.	
NOTE BOOK NO.	
AREAS CHECKED	



FILE NAME =	USER NAME = 1654	DESIGNED - NGS	REVISED -	STATE OF ILLINOIS DEPARTMENT OF TRANSPORTATION	U.S. ROUTE 30 AT IL ROUTE 31 CROSS-SECTIONS - RAMP A	F.A. RTE.	SECTION	COUNTY	TOTAL SHEETS	SHEET NO.
ht:\jobs\2010\20103003\cod\site\dgn\refs\RampA-300\DI60133-sh1-RampA-300-xsec.dgn		DRAWN - NGS	REVISED -			349	(10 & 11 VB) R-3	*	507	470
PLOT SCALE = 20.0000' / IN.		CHECKED - RS	REVISED -			* KANE AND KENDALL CONTRACT NO. 60133				
PLOT DATE = 5/16/2012		DATE - 05/11/2012	REVISED -			ILLINOIS FED. AID PROJECT				
				SCALE:		SHEET NO. 5 OF 16 SHEETS		STA. 305+50.00 TO STA. 306+50.00		