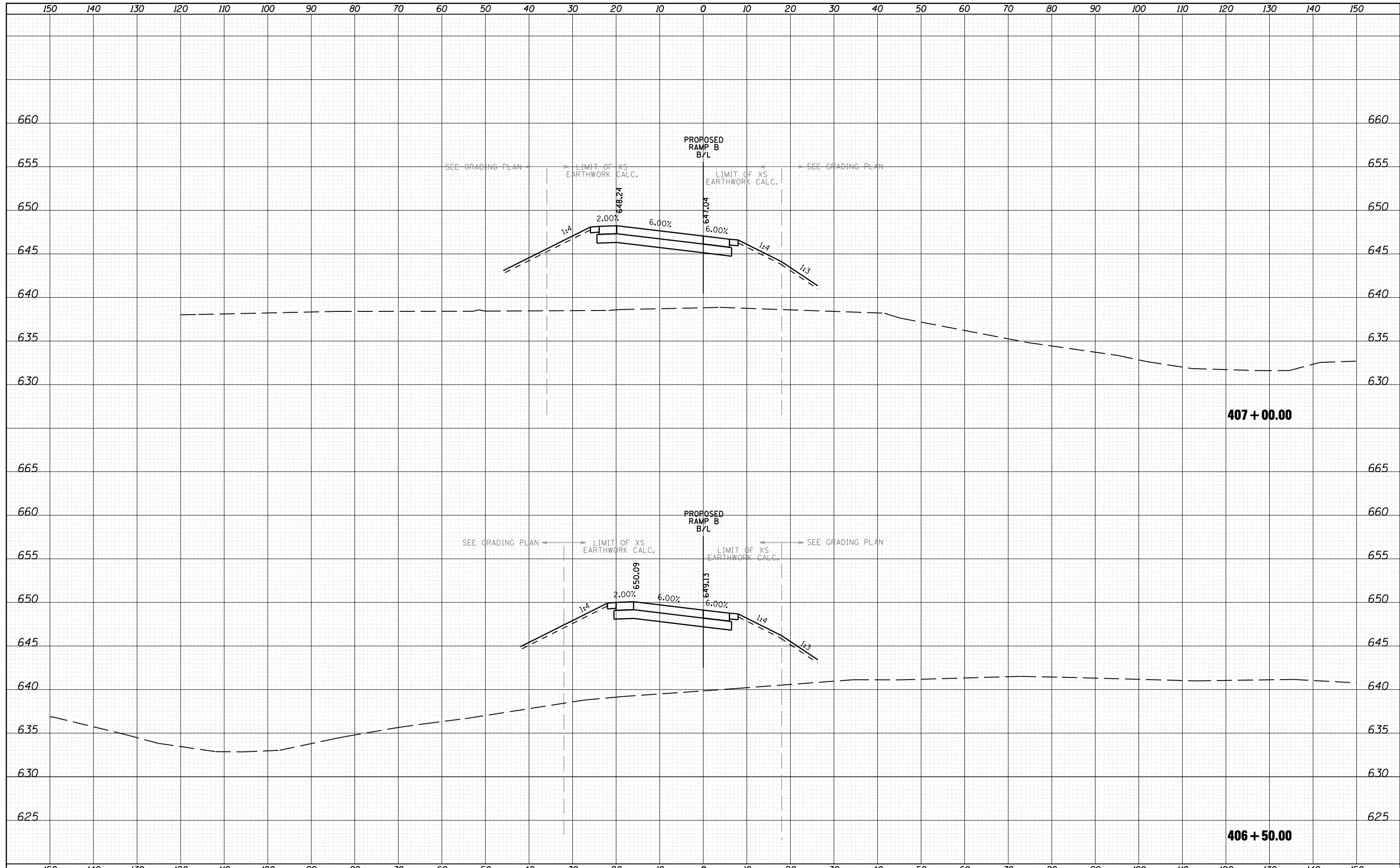


DATE	
BY	
SURVEYED	
PLOTTED	
TEMPLATE	
AREAS	
CHECKED	
FINAL SURVEY	
NOTE BOOK	
NO.	

DATE	
BY	
SURVEYED	
PLOTTED	
TEMPLATE	
AREAS	
CHECKED	
ORIGINAL SURVEY	
NOTE BOOK	
NO.	



FILE NAME =	USER NAME = 1654	DESIGNED - NGS	REVISED -	STATE OF ILLINOIS DEPARTMENT OF TRANSPORTATION	U.S. ROUTE 30 AT IL ROUTE 31 CROSS SECTIONS - RAMP B	F.A. RTE. = 349	SECTION = (10 & 11 VB) R-3	COUNTY = *	TOTAL SHEETS = 507	SHEET NO. = 490
ht:\jobs\2010\20103003\cod\site\dgn\refs\RampB-400\DI60133-sh1-RampB-400-xsec.dgn	PLOT SCALE = 20.0000' / IN.	CHECKED - RS	REVISED -			* KANE AND KENDALL	CONTRACT NO. 60133			
PLOT DATE = 5/16/2012	DATE = 05/11/2012	REVISED -				ILLINOIS FED. AID PROJECT				
SCALE: SHEET NO. 9 OF 14 SHEETS		STA. 406+50.00 TO STA. 407+00.00								