

147TH STREET (IL-83) PAVEMENT ALTERNATES

HOT-MIX ASPHALT PAVEMENT ALTERNATE

- 2" POLYMERIZED HOT-MIX ASPHALT SURFACE COURSE, STONE MATRIX ASPHALT, N80
- 2" POLYMERIZED HOT-MIX ASPHALT BINDER COURSE, STONE MATRIX ASPHALT, N80
- 6 1/2" HOT-MIX ASPHALT BINDER COURSE, IL-19.0, N90 (PAID FOR AS HMA BASE COURSE - 6 1/2")
- 12" AGGREGATE SUBGRADE

PCC PAVEMENT ALTERNATE

- 9 1/4" PORTLAND CEMENT CONCRETE (JOINTED)
- 4 1/2" STABILIZED SUBBASE - HOT-MIX ASPHALT
- 12" AGGREGATE SUBGRADE

147TH STREET (IL-83) INTERIM PAVEMENT (ARTERIAL) ALTERNATES

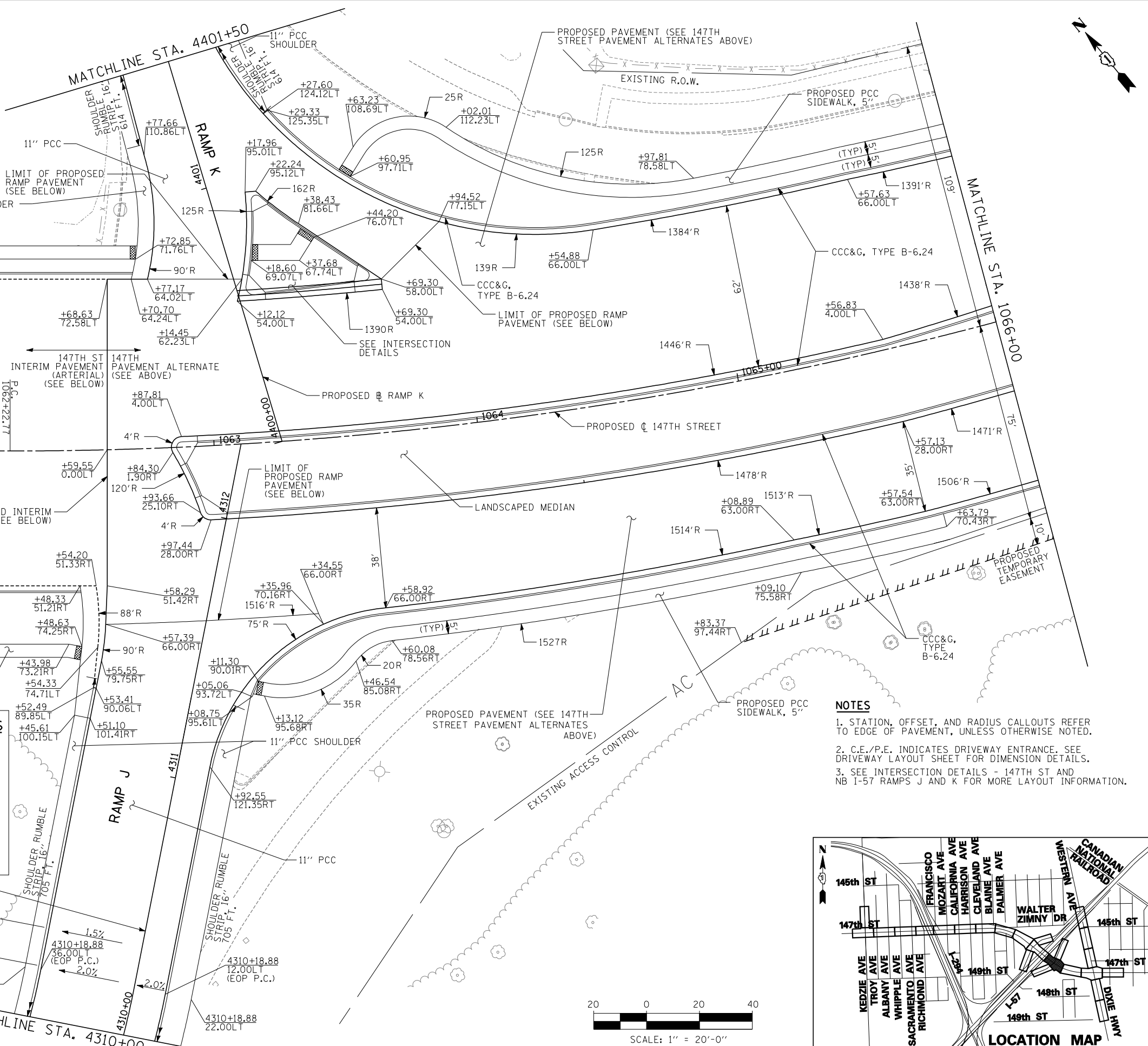
- HOT-MIX ASPHALT ALTERNATE**
PAID FOR AS HMA PAVEMENT (FULL DEPTH) 10"
- 2" POLYMERIZED HOT-MIX ASPHALT SURFACE COURSE, STONE MATRIX ASPHALT, N80
- 2 1/4" POLYMERIZED HOT-MIX ASPHALT BINDER COURSE, STONE MATRIX ASPHALT, N80
- 5 3/4" POLYMERIZED HOT-MIX ASPHALT BINDER COURSE, IL-19.0, N90
- 12" AGGREGATE SUBBASE

PCC PAVEMENT ALTERNATE

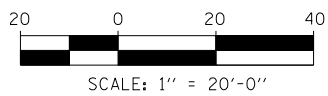
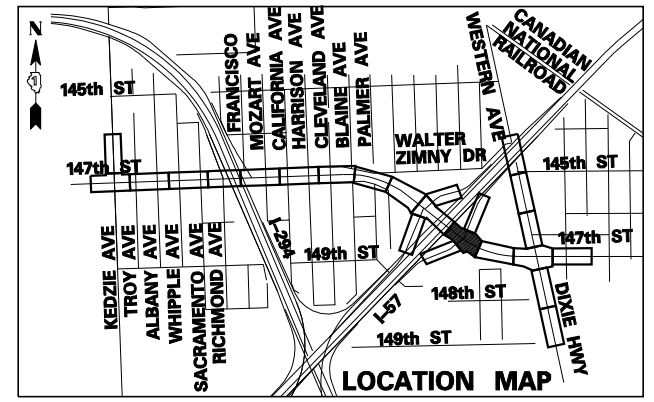
- 8 3/4" PORTLAND CEMENT CONCRETE (JOINTED)
- 4 1/2" STABILIZED SUBBASE - HOT-MIX ASPHALT
- 12" AGGREGATE SUBBASE

RAMP PAVEMENT:

- 11" PORTLAND CEMENT CONCRETE PAVEMENT (JOINTED)
- 4 1/2" STABILIZED SUBBASE - HOT-MIX ASPHALT
- 12" AGGREGATE SUBGRADE



- NOTES**
1. STATION, OFFSET, AND RADIUS CALLOUTS REFER TO EDGE OF PAVEMENT, UNLESS OTHERWISE NOTED.
 2. C.E./P.E. INDICATES DRIVEWAY ENTRANCE. SEE DRIVEWAY LAYOUT SHEET FOR DIMENSION DETAILS.
 3. SEE INTERSECTION DETAILS - 147TH ST AND NB I-57 RAMP J AND K FOR MORE LAYOUT INFORMATION.



TYLIN INTERNATIONAL USER NAME = PLOT SCALE = PLOT DATE =	DESIGNED - DM	REVISED -	STATE OF ILLINOIS DEPARTMENT OF TRANSPORTATION	147TH STREET PROJECT PROPOSED PLANS - 147TH STREET		F.A.I. RTE. XX	SECTION (0405-1 & 0506-2) R-1	COUNTY COOK	TOTAL SHEETS 577	SHEET NO. 67	
	DRAWN - DM	REVISED -		SCALE: 1"=20'	SHEET NO. 11 OF 25 SHEETS	STA. 1060+50 TO STA. 1066+00	CONTRACT NO. 60M57		FED. AID PROJECT		
	CHECKED - JPM	REVISED -									
	DATE - 5/23/2012	REVISED -									