

DIXIE/WESTERN AVENUE PAVEMENT ALTERNATES

HOT-MIX ASPHALT PAVEMENT ALTERNATE

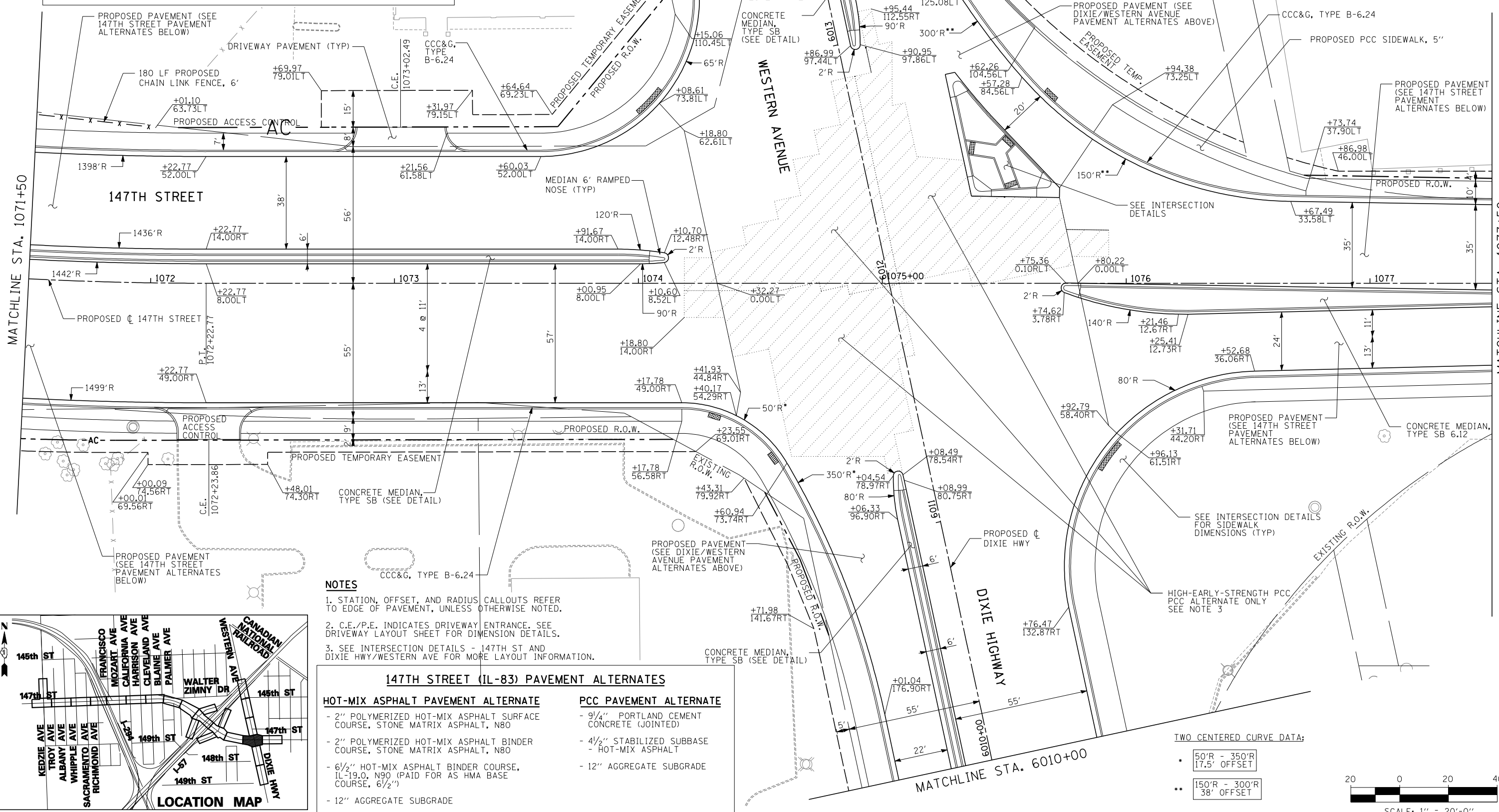
- 2" POLYMERIZED HOT-MIX ASPHALT SURFACE COURSE, STONE MATRIX ASPHALT, N80
- 2" POLYMERIZED HOT-MIX ASPHALT BINDER COURSE, STONE MATRIX ASPHALT, N80
- 8 1/4" HOT-MIX ASPHALT BINDER COURSE, IL-19.0, N90 (PAID FOR AS HMA BASE COURSE, 8 1/4")
- 12" AGGREGATE SUBGRADE

PCC PAVEMENT ALTERNATE

- 10" PORTLAND CEMENT CONCRETE (JOINTED)
- 4 1/2" STABILIZED SUBBASE - HOT-MIX ASPHALT
- 12" AGGREGATE SUBGRADE

MATCHLINE STA. 1071+50

MATCHLINE STA. 1077+50



NOTES

1. STATION, OFFSET, AND RADIUS CALLOUTS REFER TO EDGE OF PAVEMENT, UNLESS OTHERWISE NOTED.
2. C.E./P.E. INDICATES DRIVEWAY ENTRANCE. SEE DRIVEWAY LAYOUT SHEET FOR DIMENSION DETAILS.
3. SEE INTERSECTION DETAILS - 147TH ST AND DIXIE HWY/WESTERN AVE FOR MORE LAYOUT INFORMATION.

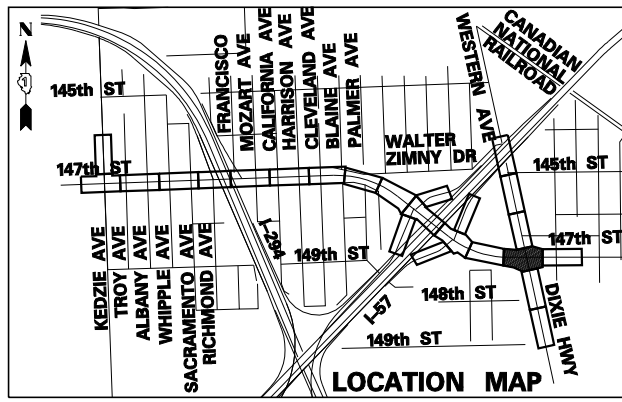
147TH STREET (IL-83) PAVEMENT ALTERNATES

HOT-MIX ASPHALT PAVEMENT ALTERNATE

- 2" POLYMERIZED HOT-MIX ASPHALT SURFACE COURSE, STONE MATRIX ASPHALT, N80
- 2" POLYMERIZED HOT-MIX ASPHALT BINDER COURSE, STONE MATRIX ASPHALT, N80
- 6 1/2" HOT-MIX ASPHALT BINDER COURSE, IL-19.0, N90 (PAID FOR AS HMA BASE COURSE, 6 1/2")
- 12" AGGREGATE SUBGRADE

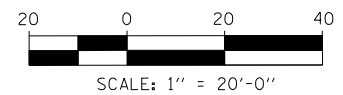
PCC PAVEMENT ALTERNATE

- 9 1/4" PORTLAND CEMENT CONCRETE (JOINTED)
- 4 1/2" STABILIZED SUBBASE - HOT-MIX ASPHALT
- 12" AGGREGATE SUBGRADE



TWO CENTERED CURVE DATA:

- 50'R - 350'R
17.5' OFFSET
- 150'R - 300'R
38' OFFSET



TYLIN INTERNATIONAL USER NAME - PLOT SCALE - PLOT DATE -	DESIGNED - DM DRAWN - DM CHECKED - JPM DATE - 5/23/2012	REVISED - REVISED - REVISED - REVISED -	STATE OF ILLINOIS DEPARTMENT OF TRANSPORTATION	147TH STREET PROJECT PROPOSED PLANS - 147TH STREET				F.A.I. RTE. XX SECTION (0405-1 & 0506-2) R-1 COUNTY COOK TOTAL SHEETS 577 SHEET NO. 69 CONTRACT NO. 60M57 FED. ROAD DIST. NO. ILLINOIS FED. AID PROJECT
	SCALE: 1"=20' SHEET NO. 13 OF 25 SHEETS STA. 1071+50 TO STA. 1077+50							
	6/20/2012 3:30:38 PM							