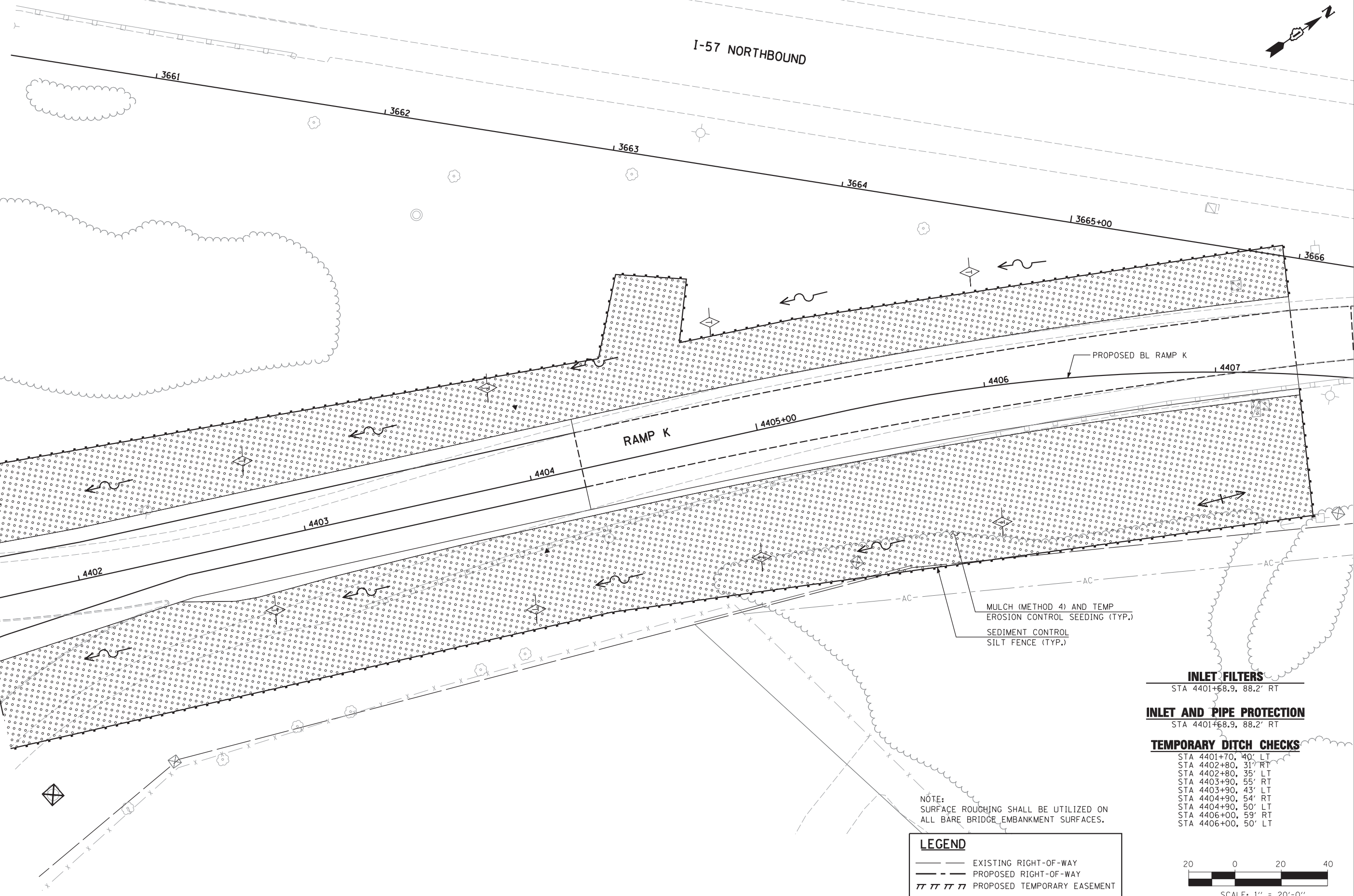


I-57 NORTHBOUND



MATCHLINE STA. 4401+50

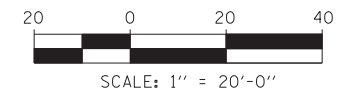
MULCH (METHOD 4) AND TEMP EROSION CONTROL SEEDING (TYP.)
SEDIMENT CONTROL SILT FENCE (TYP.)

- INLET FILTERS**
STA 4401+68.9, 88.2' RT
- INLET AND PIPE PROTECTION**
STA 4401+68.9, 88.2' RT
- TEMPORARY DITCH CHECKS**
STA 4401+70, 40' LT
STA 4402+80, 31' RT
STA 4402+80, 35' LT
STA 4403+90, 55' RT
STA 4403+90, 43' LT
STA 4404+90, 54' RT
STA 4404+90, 50' LT
STA 4406+00, 59' RT
STA 4406+00, 50' LT

NOTE:
SURFACE ROUGHING SHALL BE UTILIZED ON ALL BARE BRIDGE EMBANKMENT SURFACES.

LEGEND

- — — — — EXISTING RIGHT-OF-WAY
- - - - - PROPOSED RIGHT-OF-WAY
- ||||| PROPOSED TEMPORARY EASEMENT



USER NAME =	DESIGNED - JRS	REVISED - JRS 12/01/2011
	DRAWN - MJF	REVISED - JRS 02/15/2012
PLOT SCALE =	CHECKED - APS	REVISED - JRS 05/04/2012
PLOT DATE	DATE - 7/22/2011	REVISED -

**STATE OF ILLINOIS
DEPARTMENT OF TRANSPORTATION**

**147TH STREET PROJECT
EROSION CONTROL PLAN - RAMP K**

SCALE: 1"=20' SHEET NO. 22 OF 22 SHEETS STA. 4401+50 TO STA. 4407+50

F.A.I. RTE.	SECTION	COUNTY	TOTAL SHEETS	SHEET NO.
57	(0405-1 & 0506-2) R-1	COOK	577	194
FED. ROAD DIST. NO.			ILLINOIS FED. AID PROJECT	
			CONTRACT NO. 60M57	