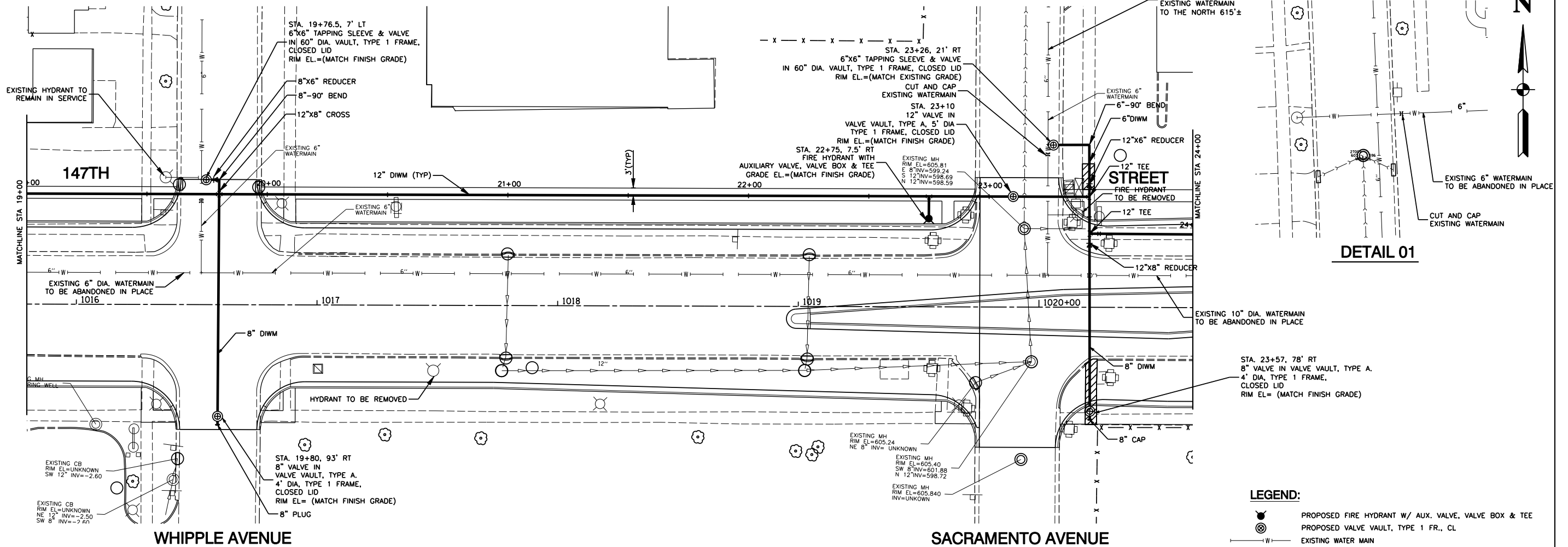


WHIPPLE AVENUE

SACRAMENTO AVENUE

SACRAMENTO AVENUE



LEGEND:

- PROPOSED FIRE HYDRANT W/ AUX. VALVE, VALVE BOX & TEE
- PROPOSED VALVE VAULT, TYPE 1 FR., CL.
- EXISTING WATER MAIN
- PROPOSED D.I.W.M., CLASS 52, WITH POLYETHYLENE ENCASEMENT
- EXISTING STORM SEWER
- SIDEWALK REMOVAL AND REPLACEMENT
-PORTLAND CEMENT CONCRETE 5 INCH
-AGGREGATE BASE COURSE, TYPE B 4 INCH

ROBINSON ENGINEERING, LTD.
CONSULTING REGISTERED PROFESSIONAL ENGINEERS
AND PROFESSIONAL LAND SURVEYORS
17000 SOUTH PARK AVENUE SOUTH HOLLAND, ILLINOIS 60473
(708) 381-6700 FAX (708) 381-3828

© COPYRIGHT 2011
ILLINOIS DESIGN FIRM REGISTRATION NO. 184001128.

147TH STREET PROJECT
PROPOSED WATERMAIN IMPROVEMENTS
PLAN AND PROFILE
STA 19+00 TO STA 24+00

POSEN, ILLINOIS

REVISIONS		
No.	Date	Remarks

Drawn by: MED Date: 08/30/11
Checked by: VC Scale: H 1"= 20' V 1"= 4'
Sheet 4 of 11 Project No. 10-432

