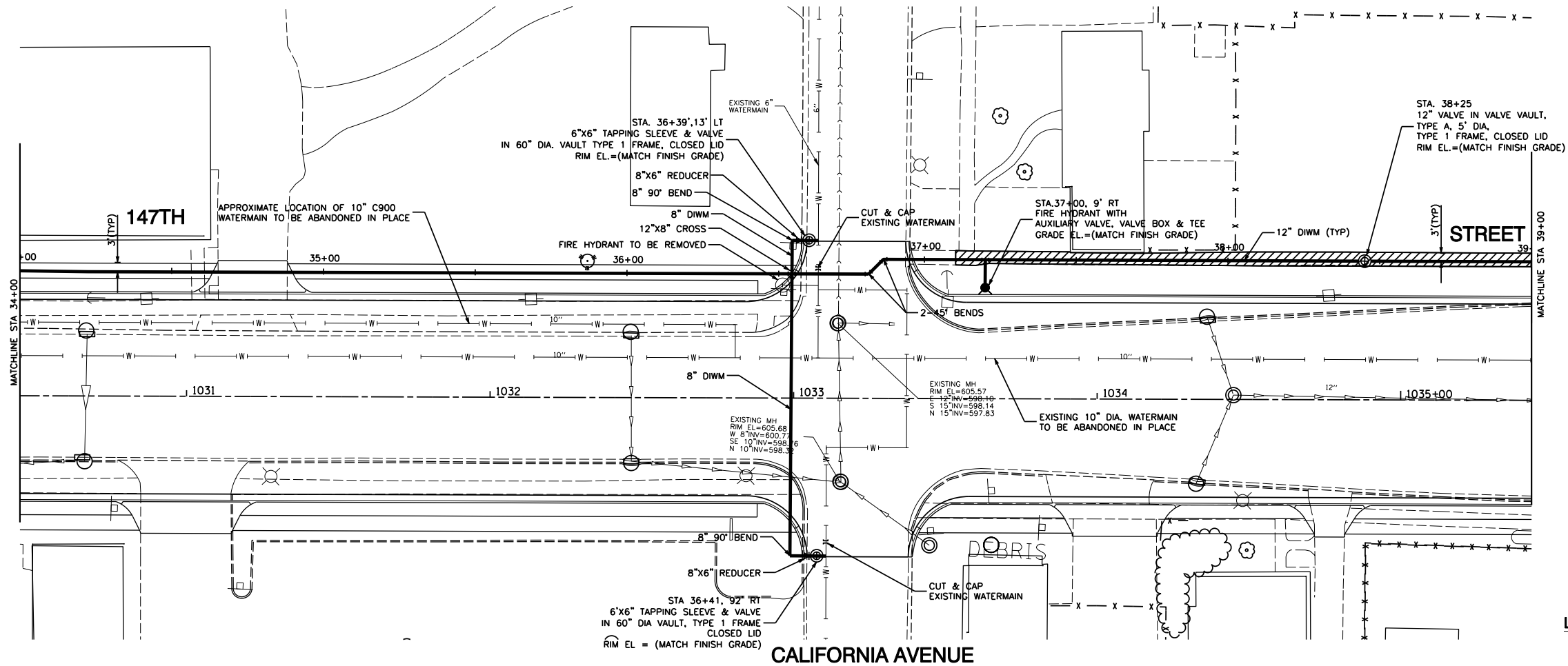
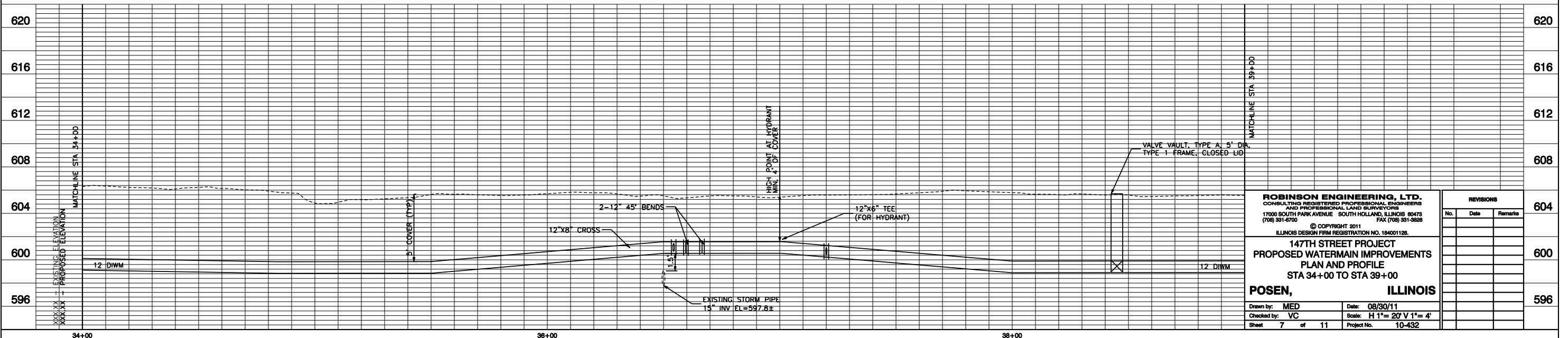


CALIFORNIA AVENUE



LEGEND:

- PROPOSED FIRE HYDRANT W/ AUX. VALVE, VALVE BOX & TEE
- PROPOSED VALVE VAULT, TYPE 1 FR., CL.
- EXISTING WATER MAIN
- PROPOSED D.I.W.M., CLASS 52, WITH POLYETHYLENE ENCASEMENT
- EXISTING STORM SEWER
- SIDEWALK REMOVAL AND REPLACEMENT
- PORTLAND CEMENT CONCRETE 5 INCH
- AGGREGATE BASE COURSE, TYPE B 4 INCH



ROBINSON ENGINEERING, LTD.
 CONSULTING REGISTERED PROFESSIONAL ENGINEERS
 AND PROFESSIONAL LAND SURVEYORS
 17000 SOUTH PARK AVENUE SOUTH HOLLAND, ILLINOIS 60473
 (708) 381-8700 FAX (708) 381-3828
 © COPYRIGHT 2011
 ILLINOIS DESIGN FIRM REGISTRATION NO. 184001128.

147TH STREET PROJECT
PROPOSED WATERMAIN IMPROVEMENTS
PLAN AND PROFILE
STA 34+00 TO STA 39+00

POSEN, ILLINOIS

Drawn by: MED Date: 08/30/11
 Checked by: VC Scale: H 1"= 20' V 1"= 4'
 Sheet 7 of 11 Project No. 10-432

REVISIONS		
No.	Date	Remarks