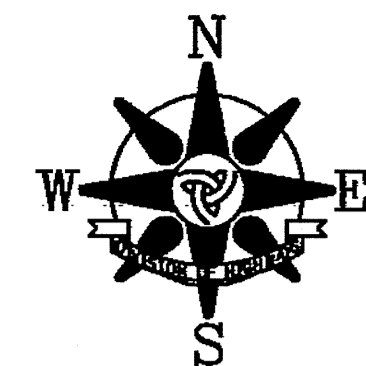


**PART OF SECTION 12, T36N, R13E & SECTION 7, T36N, R14E, OF THE 3RD PM, COOK COUNTY, ILLINOIS**

**RIGHT OF WAY CORNER RECOVERY TIES**



**DESCRIPTION LEGEND**

- 950 - MAG NAIL IN UTILITY POLE
- 951 - MAG NAIL IN TREE
- 952 - "4" IN POLE FOUNDATION, BASE, OR BOLT
- 953 - CENTER TOP SPINDLE BOLT OF FIRE HYDRANT
- 954 - "4" ON CURB
- 955 - "4" ON WALK / CONCRETE PAD
- 956 - NW CORNER OF BUILDING
- 957 - NE CORNER OF BUILDING
- 958 - SE CORNER OF BUILDING
- 959 - SW CORNER OF BUILDING
- 960 - IRON ROD WITH YELLOW PLASTIC CAP
- 961 - "4" ON METAL FENCE POST
- 962 - MAG NAIL IN FENCE POST
- 963 - "4" ON MANHOLE, CATCH BASIN, OR VAULT RIM
- 964 - MAG NAIL IN PAVEMENT
- 965 - "4" ON CONCRETE RETAINING WALL
- 966 - "4" ON CONCRETE HEADWALL
- 967 - MAG NAIL IN LIGHT POLE
- 968 - MAG NAIL IN WOOD SIGN POST
- 969 - MAG NAIL IN RAILROAD TIE
- 970 - "4" ON LEG OF ELECTRIC TRANSMISSION TOWER
- 971 - CORNER OF LARGE SIGN
- 972 - FENCE CORNER
- 973 - MAG NAIL ON WOOD GUARDRAIL POST
- 974 - "4" ON CONC. SIGN FOUNDATION
- 975 - MAG NAIL ON STUMP
- 976 - "4" ON BUILDING FACE
- 977 - "4" ON RAILROAD SPIKE
- 978 - CORNER OF PLANTER
- 979 - CORNER OF COLUMN
- 980 - "4" ON CONCRETE PIER
- 981 - "4" ON BUILDING FOUNDATION
- 982 - NAIL AND WASHER IN PAVEMENT

STATE OF ILLINOIS )  
 ) S.S.  
 COUNTY OF COOK )

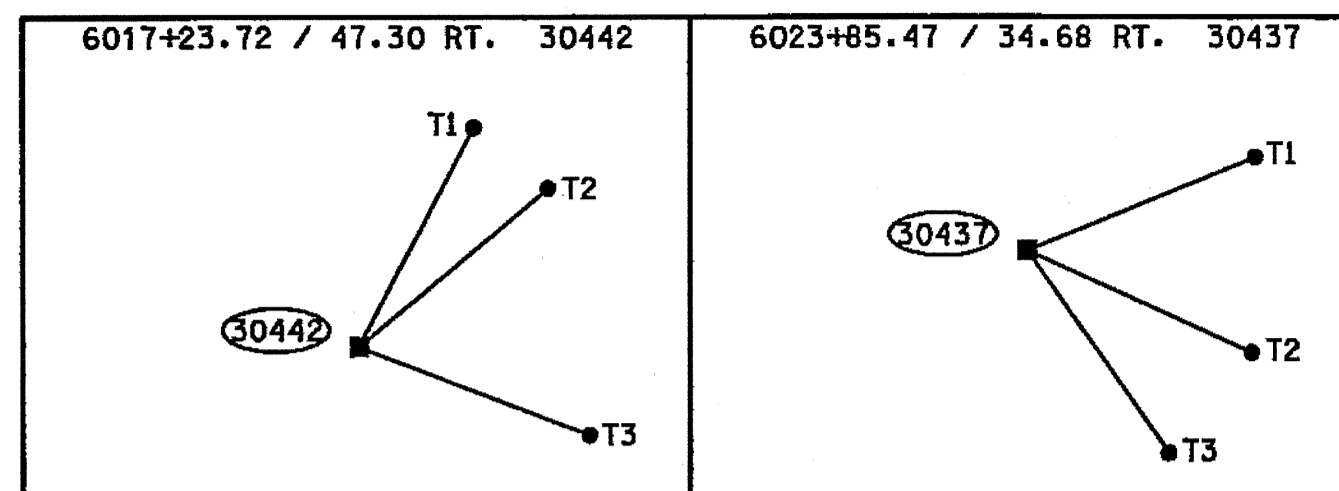
THIS IS TO CERTIFY THAT I, COVENTINE FIDIS, AN ILLINOIS PROFESSIONAL LAND SURVEYOR, HAVE SURVEYED THE PLAT OF HIGHWAYS SHOWN HEREON IN SECTION 12, TOWNSHIP 36 NORTH, RANGE 13 EAST AND SECTION 7, TOWNSHIP 36 NORTH, RANGE 14 EAST OF THE THIRD PRINCIPAL MERIDIAN, IN COOK COUNTY, THAT THE PLAT CORRECTLY REPRESENTS SAID SURVEY, THAT ALL MONUMENTS FOUND AND ESTABLISHED ARE OF PERMANENT QUALITY AND OCCUPY THE POSITIONS SHOWN THEREON AND THAT THE MONUMENTS ARE SUFFICIENT TO ENABLE THE SURVEY TO BE RETRACED. MADE FOR THE DEPARTMENT OF TRANSPORTATION, STATE OF ILLINOIS.

DATED AT CHICAGO, ILLINOIS THIS 6TH DAY OF FEBRUARY, 2012.

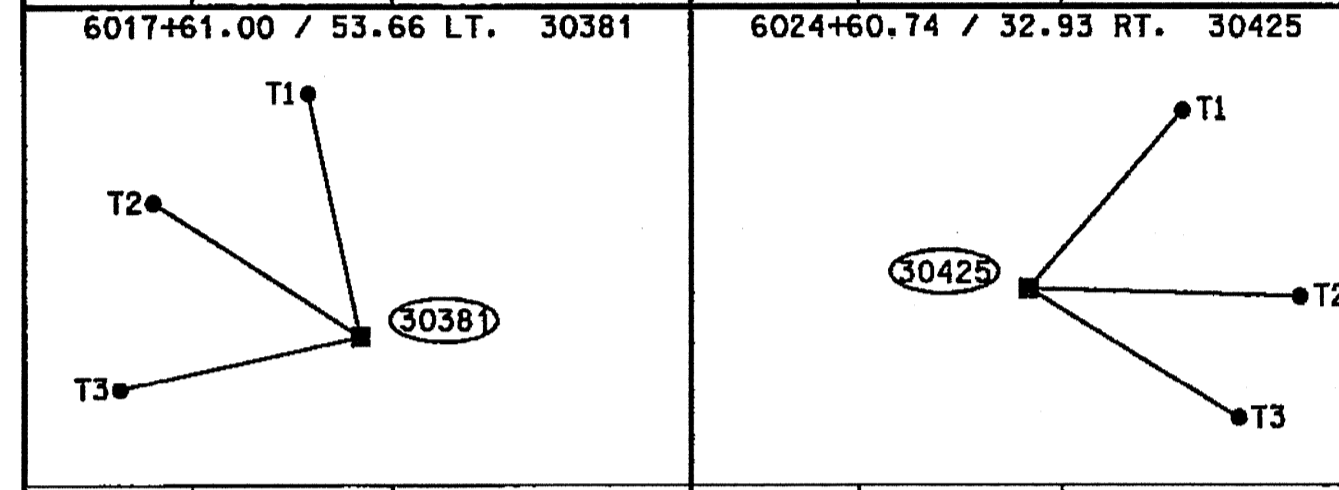
*[Signature]*

COVENTINE FIDIS  
 ILLINOIS PROFESSIONAL LAND SURVEYOR NO. 2159  
 LICENSE EXPIRATION DATE 11/30/2012

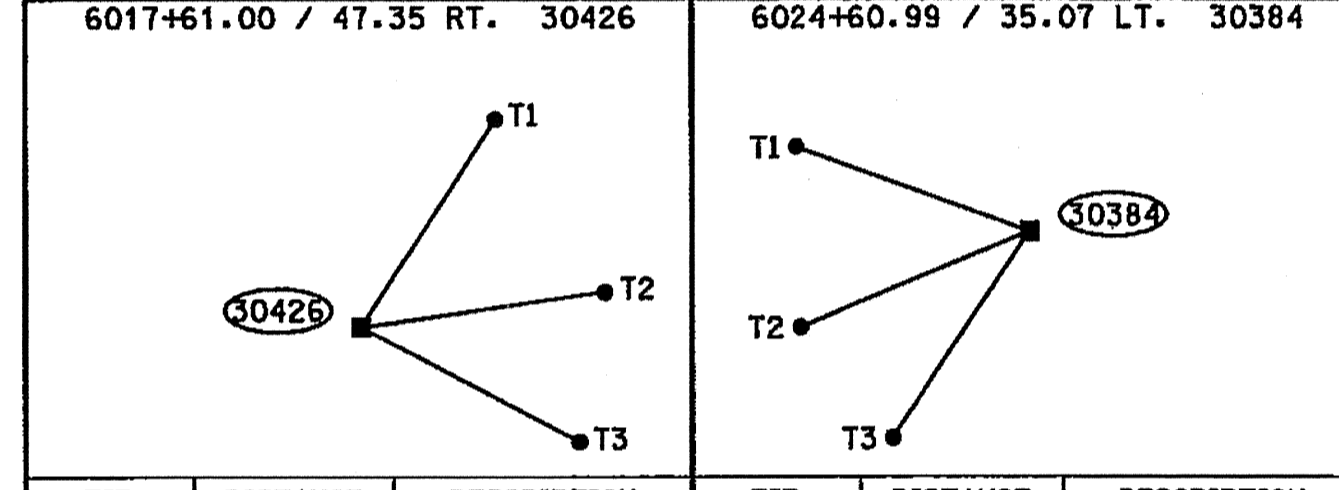
THIS PROFESSIONAL SERVICE CONFORMS TO THE CURRENT ILLINOIS MINIMUM SURVEY STANDARDS.



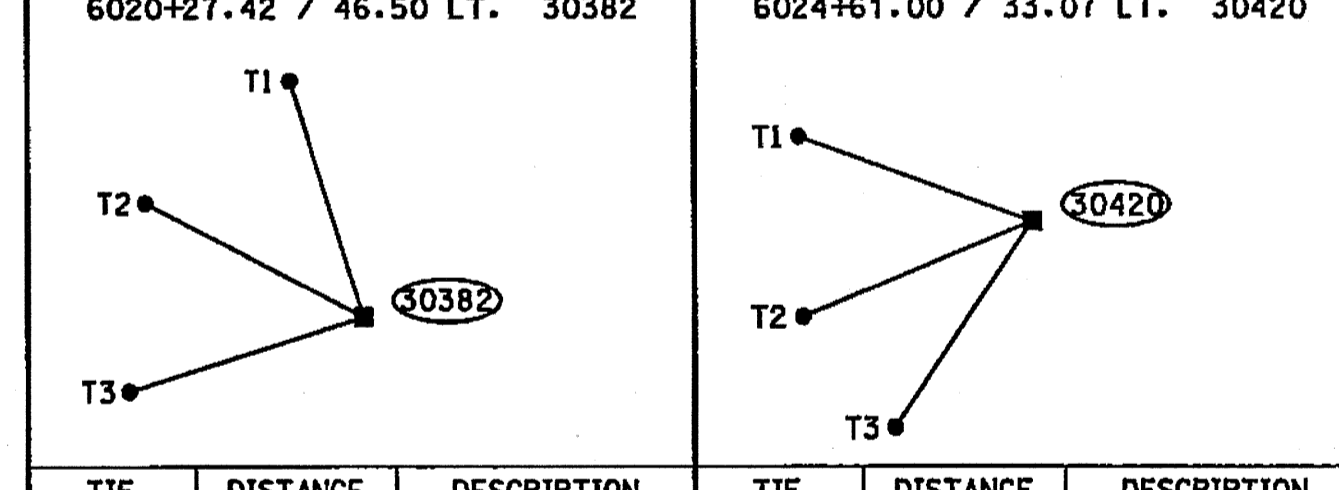
TIE	DISTANCE	DESCRIPTION
T1	45.86'	982
T2	30.97'	982
T3	27.96'	954



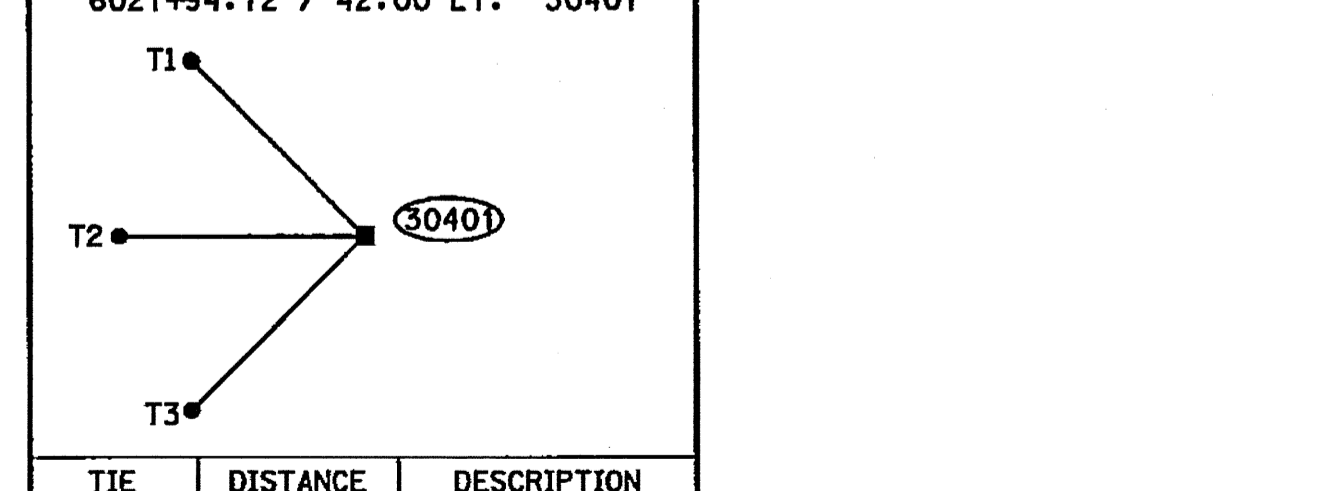
TIE	DISTANCE	DESCRIPTION
T1	31.02'	964
T2	18.12'	964
T3	30.90'	964



TIE	DISTANCE	DESCRIPTION
T1	45.46'	982
T2	29.64'	982
T3	35.87'	982

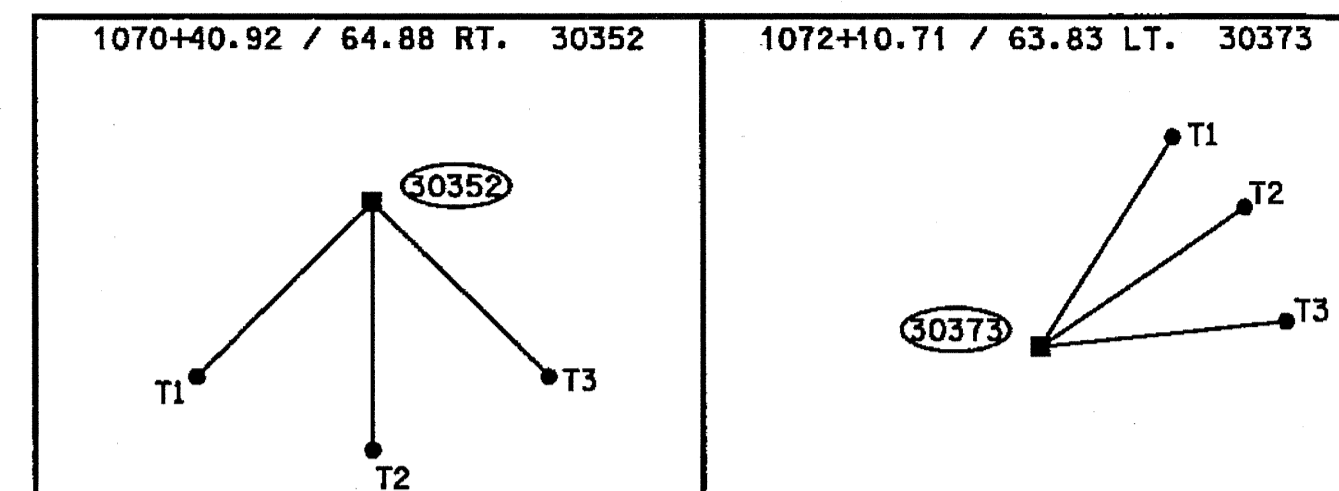


TIE	DISTANCE	DESCRIPTION
T1	45.12'	964
T2	69.99'	958
T3	28.08'	951

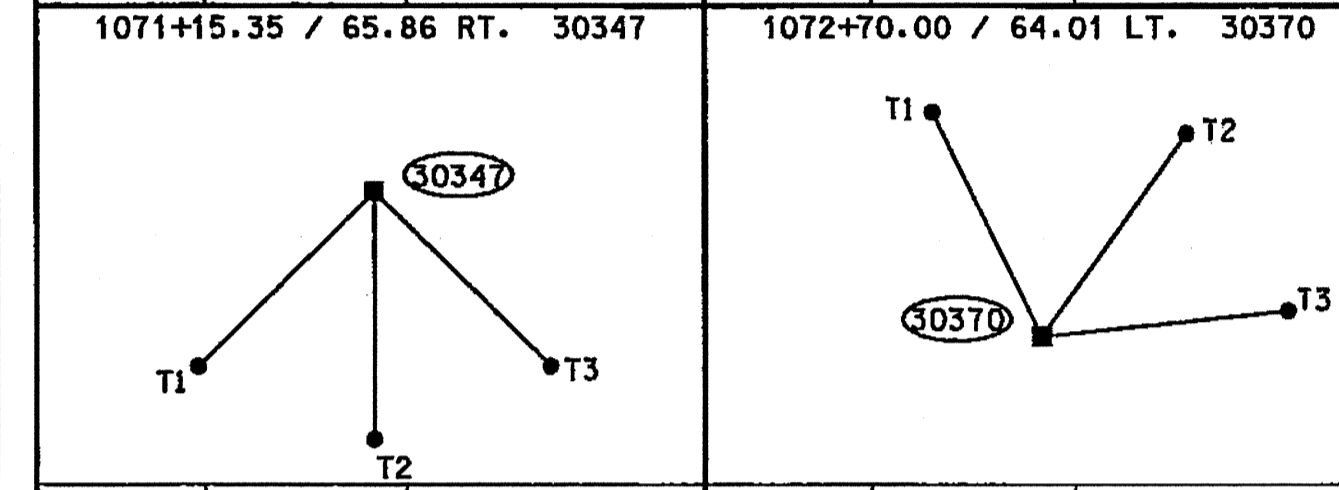


TIE	DISTANCE	DESCRIPTION
T1	111.00'	964
T2	37.36'	964
T3	30.57'	964

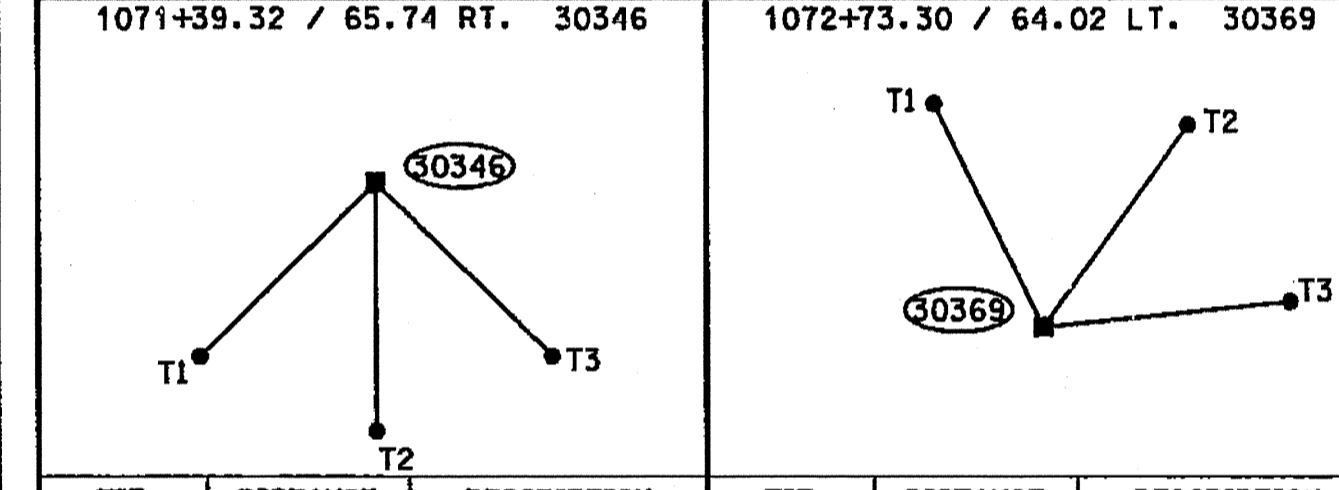
DIXIE HIGHWAY



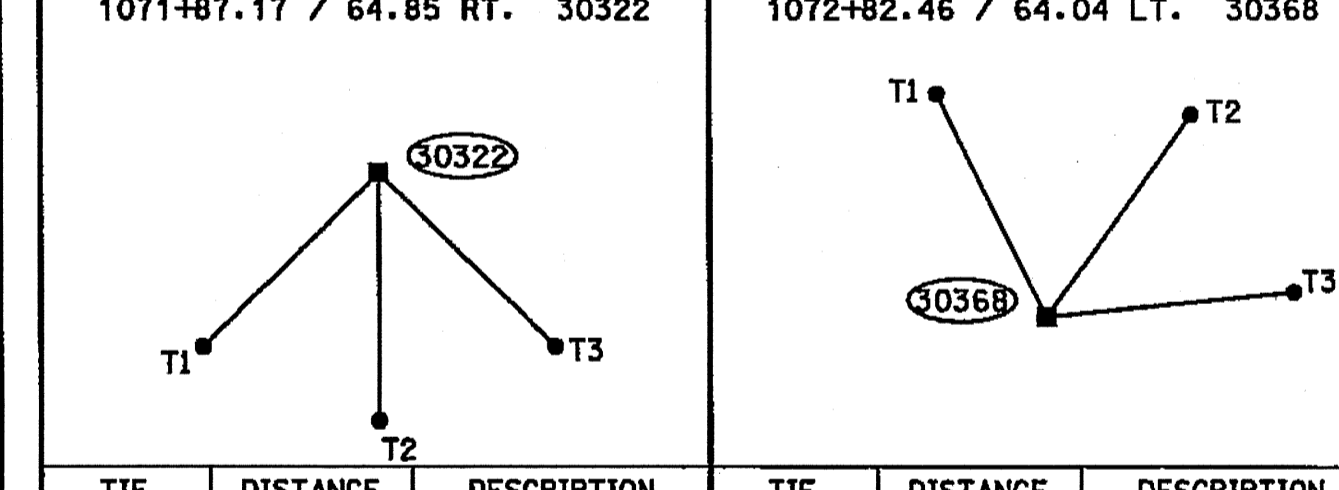
TIE	DISTANCE	DESCRIPTION
T1	47.14'	960
T2	29.72'	960
T3	29.15'	960



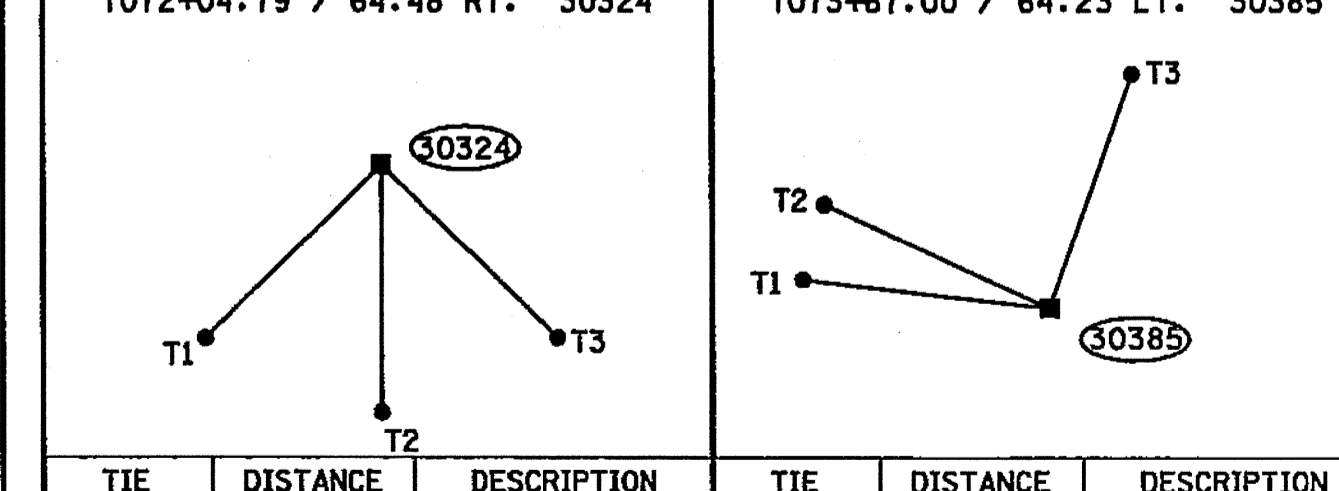
TIE	DISTANCE	DESCRIPTION
T1	38.20'	960
T2	24.08'	960
T3	15.32'	960



TIE	DISTANCE	DESCRIPTION
T1	27.31'	960
T2	24.63'	960
T3	38.54'	960

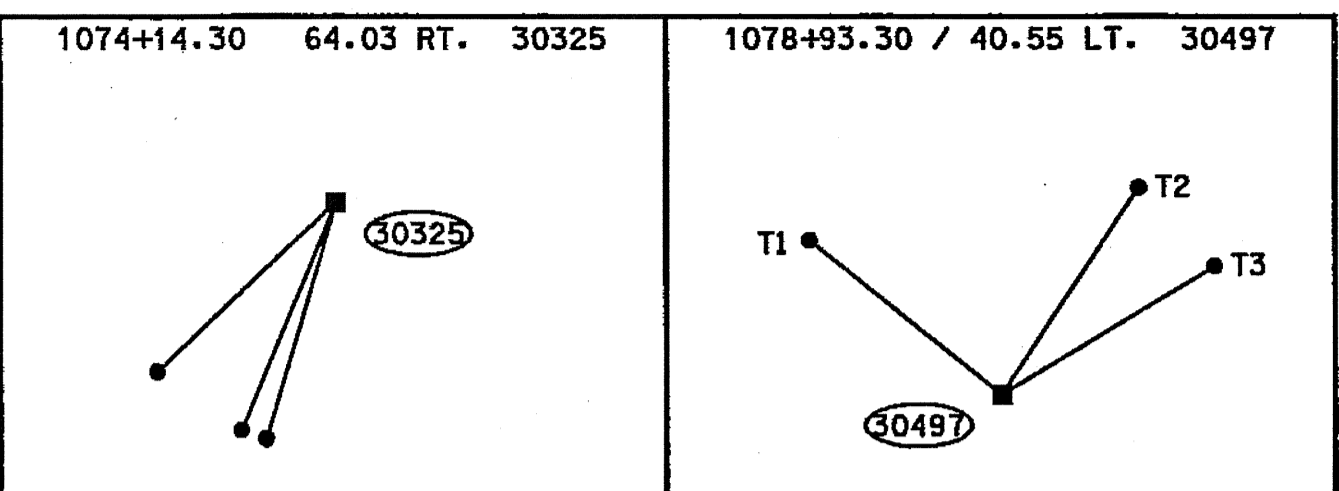


TIE	DISTANCE	DESCRIPTION
T1	58.97'	960
T2	31.25'	960
T3	42.72'	954

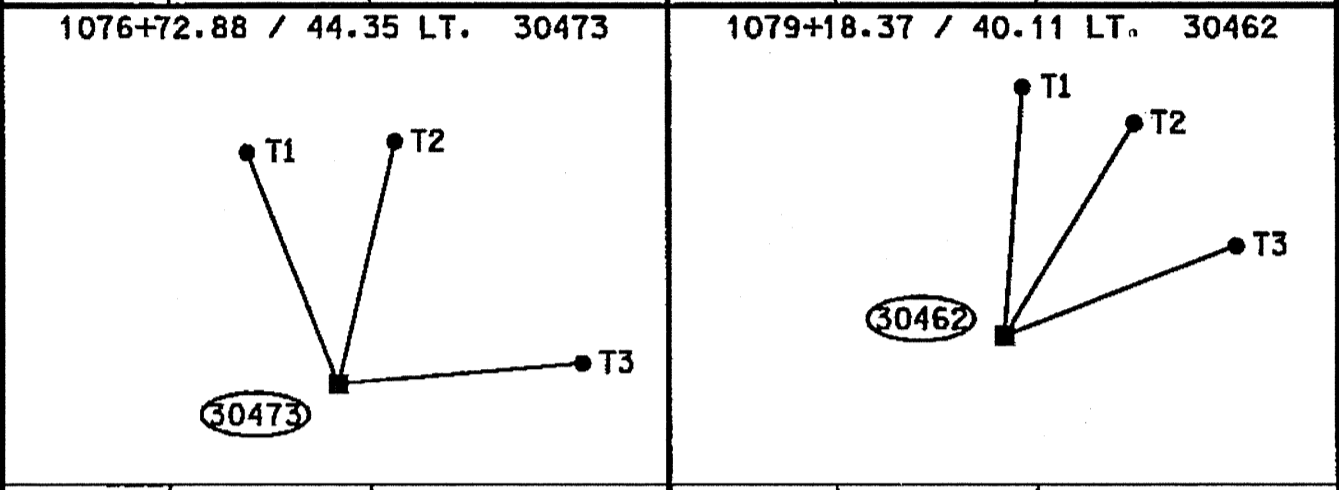


TIE	DISTANCE	DESCRIPTION
T1	45.57'	960
T2	34.94'	954
T3	59.91'	954

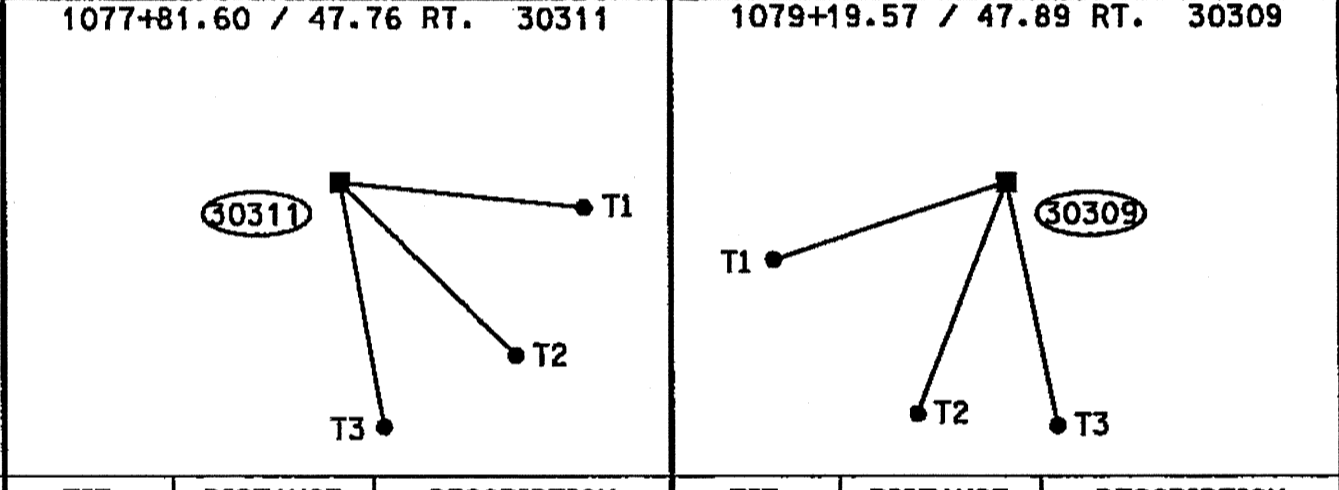
F.A.U. 1602 (IL 83), SIBLEY BOULEVARD (147th. STREET)



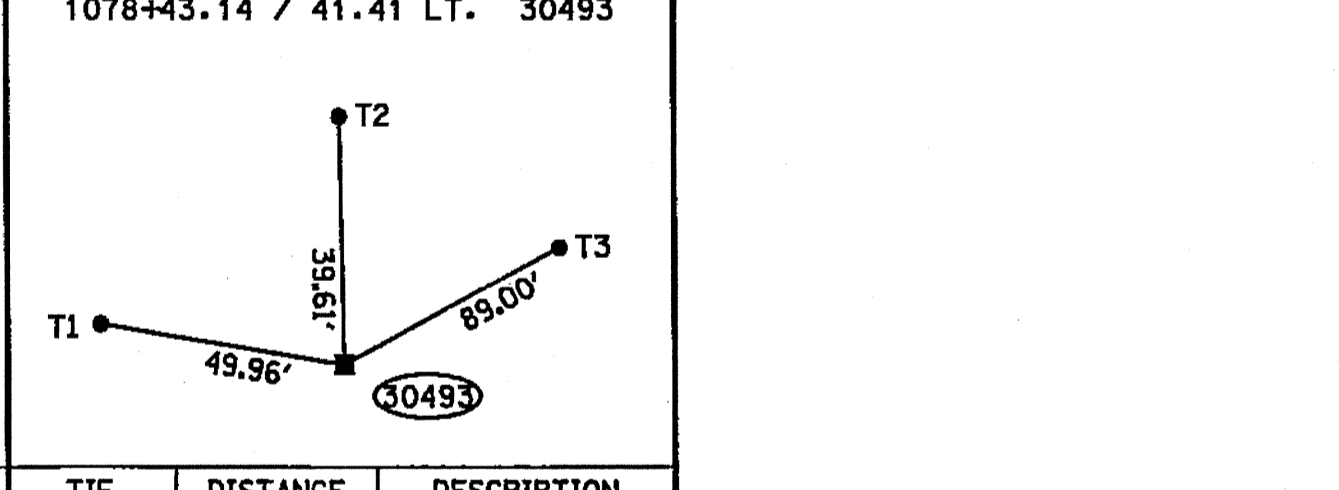
TIE	DISTANCE	DESCRIPTION
T1	84.69'	956
T2	62.24'	957
T3	63.74'	957



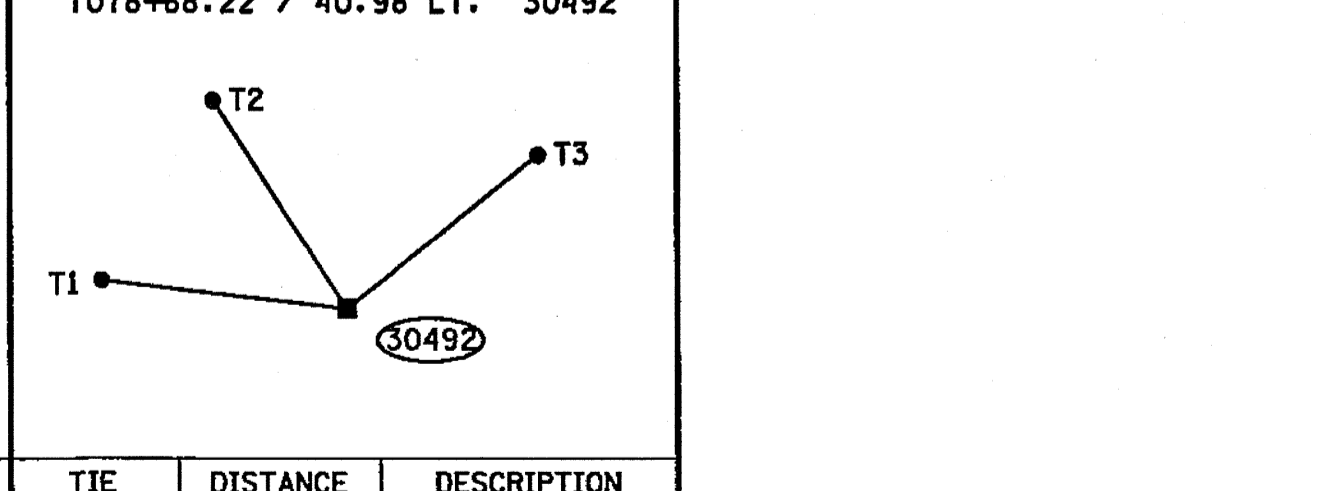
TIE	DISTANCE	DESCRIPTION
T1	18.05'	955
T2	11.07'	955
T3	28.50'	959



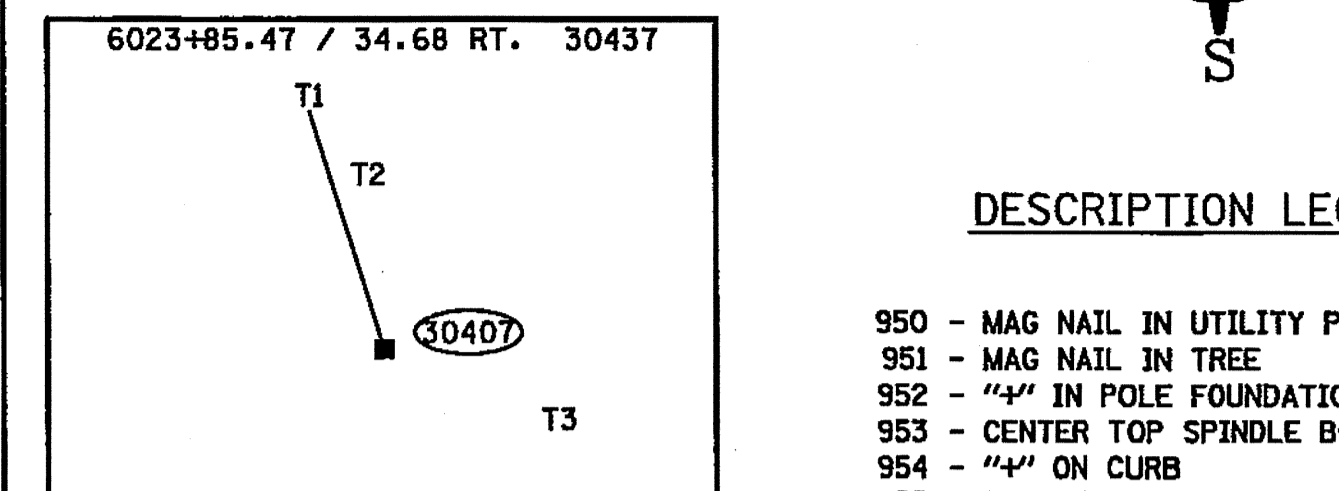
TIE	DISTANCE	DESCRIPTION
T1	100.53'	955
T2	136.15'	957
T3	41.35'	955



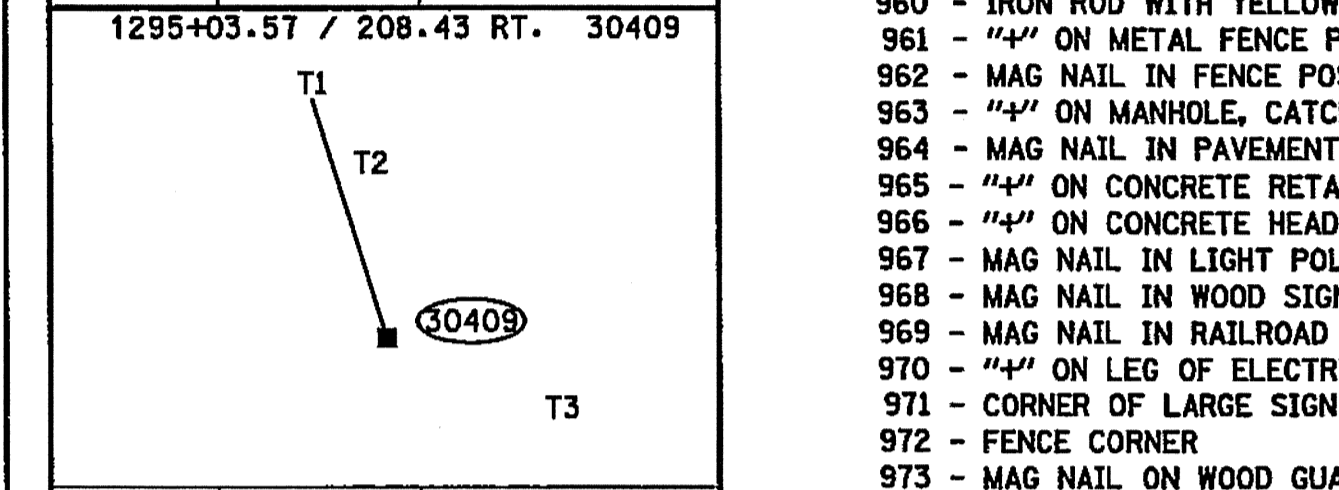
TIE	DISTANCE	DESCRIPTION
T1	49.96'	958
T2	39.61'	958
T3	89.00'	964



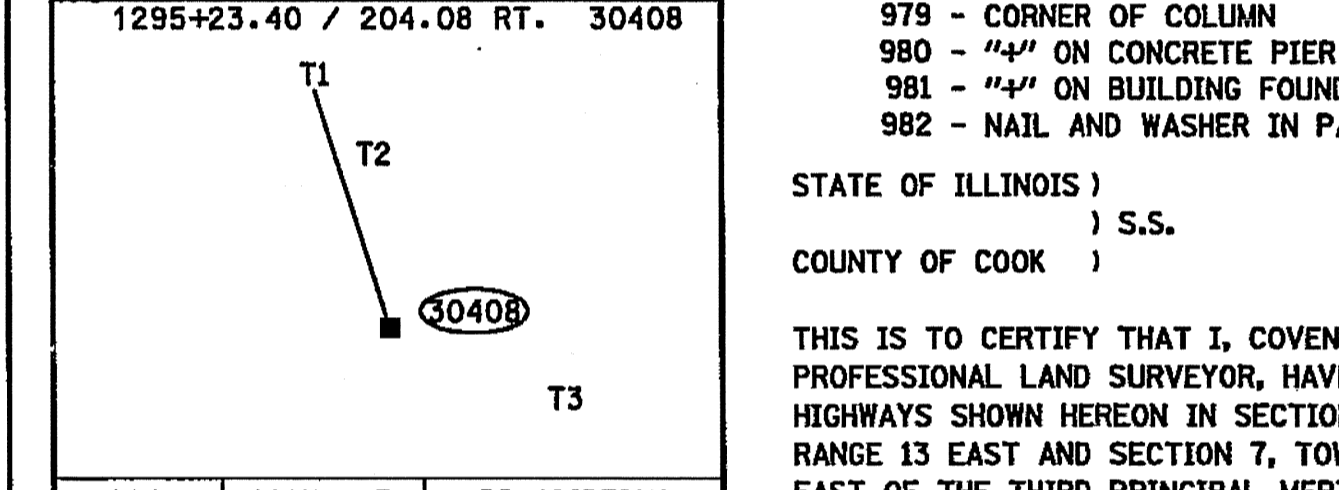
TIE	DISTANCE	DESCRIPTION
T1	115.30'	955
T2	80.06'	959
T3	46.98'	958



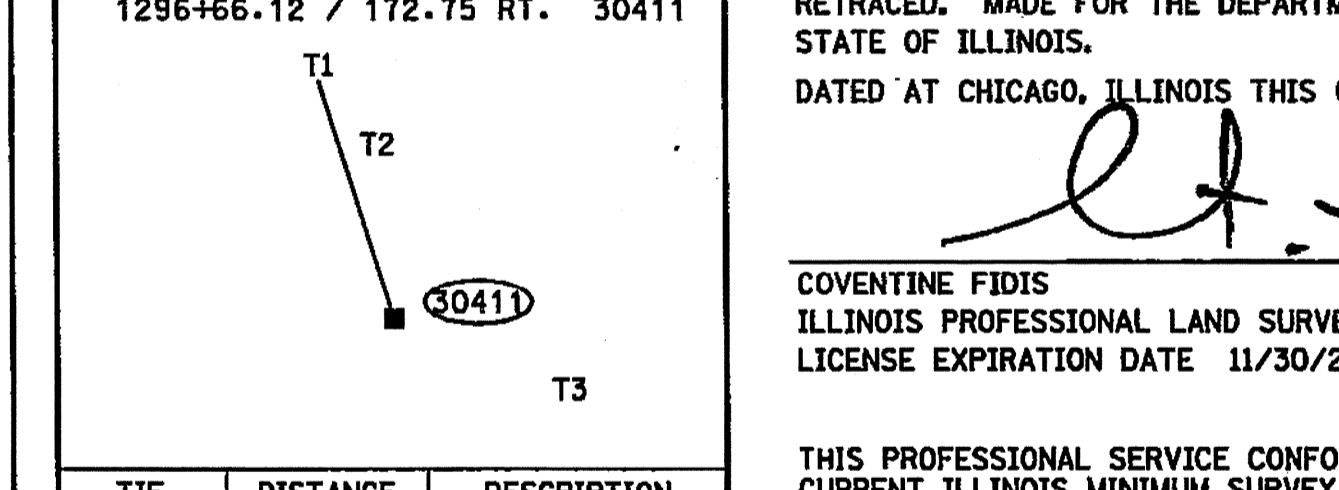
TIE	DISTANCE	DESCRIPTION
T1	64.81'	958
T2	51.24'	964
T3	46.99'	964



TIE	DISTANCE	DESCRIPTION
T1	43.13'	964
T2	28.83'	964
T3	23.41'	964



TIE	DISTANCE	DESCRIPTION
T1	40.14'	955
T2	96.29'	957
T3	47.19'	964



TIE	DISTANCE	DESCRIPTION
T1	49.96'	958
T2	39.61'	958
T3	89.00'	964

F.A.I. 57

RECEIVED  
 MAR 09 2012  
 PLATS & LEGALS

PLAT OF HIGHWAYS  
 STATE OF ILLINOIS  
 DEPARTMENT OF TRANSPORTATION  
 F.A.U. 1602 (IL 83)  
 KEDZIE AVENUE TO WESTERN AVENUE  
 SECTION: I-294 AT I-57 COUNTY: COOK  
 PROJECT: ALIGNMENT AND COORDINATE DATA JOB NO. R-90-004-09  
 SCALE: NO SCALE SHEET A16 OF A16



105 W. Madison St. Suite 1700  
 Chicago, IL 60602  
 312-277-2000 / Fax 312-277-2002

REVISION DATE: 2/6/2012

ASE JOB NO. 209021

BUREAU OF LAND ACQUISITION  
 201 WEST CENTER COURT  
 SCHAMBURG, ILLINOIS 60196 297A of 577