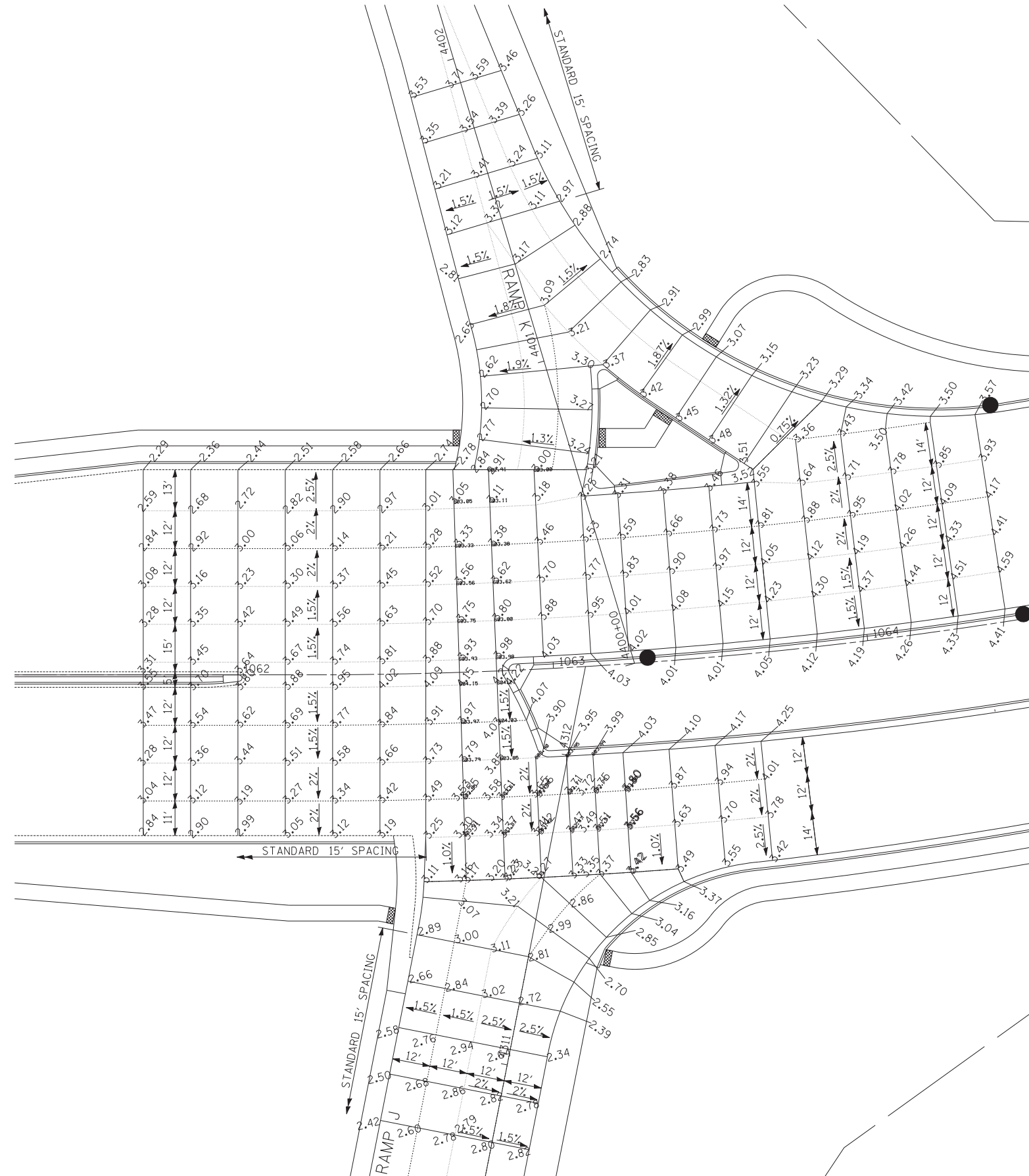
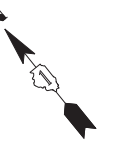


INTERSECTION LAYOUT PLAN



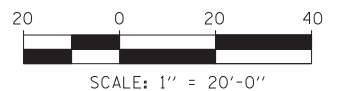
LEGEND

- C ROADWAY
- SAWED LONGITUDINAL JOINT (IDOT 420001)
- LONGITUDINAL CONSTRUCTION JOINT GROUTED-IN-PLACE TIE BAR (IDOT 420001)
- SAWED CONTRACTION JOINT (IDOT 420001)
- 1 INCH EXPANSION JOINT WITH SLEEPER SLAB (SEE DETAIL ON THIS SHEET)
- CONSTRUCTION LINE

NOTES

1. ADA RAMP PER IDOT STD 424001 PAID FOR AS PCC SIDEWALK 5".
2. ADA RAMP PER IDOT STD 424031 PAID FOR AS CONCRETE MEDIAN SURFACE 4".

JOINTING NOTE:
 - IDOT STANDARD 420001 APPLIES TO THE PCC ALTERNATE ONLY.
 - PAVEMENT ELEVATION LOCATIONS ARE IDENTICAL IN THE PCC AND HMA PAVEMENT ALTERNATES.



TYLIN INTERNATIONAL	USER NAME =	DESIGNED - JDU	REVISED -
	PLOT SCALE =	DRAWN - JDU	REVISED -
	PLOT DATE =	CHECKED - JPM	REVISED -
		DATE - 5/23/2012	REVISED -

**STATE OF ILLINOIS
DEPARTMENT OF TRANSPORTATION**

147TH STREET PROJECT			
INTERSECTION DETAIL - 147TH STREET AND NB I-57 RAMP J AND K			
SCALE: 1"=20'	SHEET NO. 1 OF 2 SHEETS	STA. 1061+30 TO STA. 1064+50	

F.A.I. RTE.	SECTION	COUNTY	TOTAL SHEETS	SHEET NO.
XX	(0405-1 & 0506-2) R-1	COOK	577	309
FED. ROAD DIST. NO.			ILLINOIS FED. AID PROJECT	
			CONTRACT NO. 60M57	