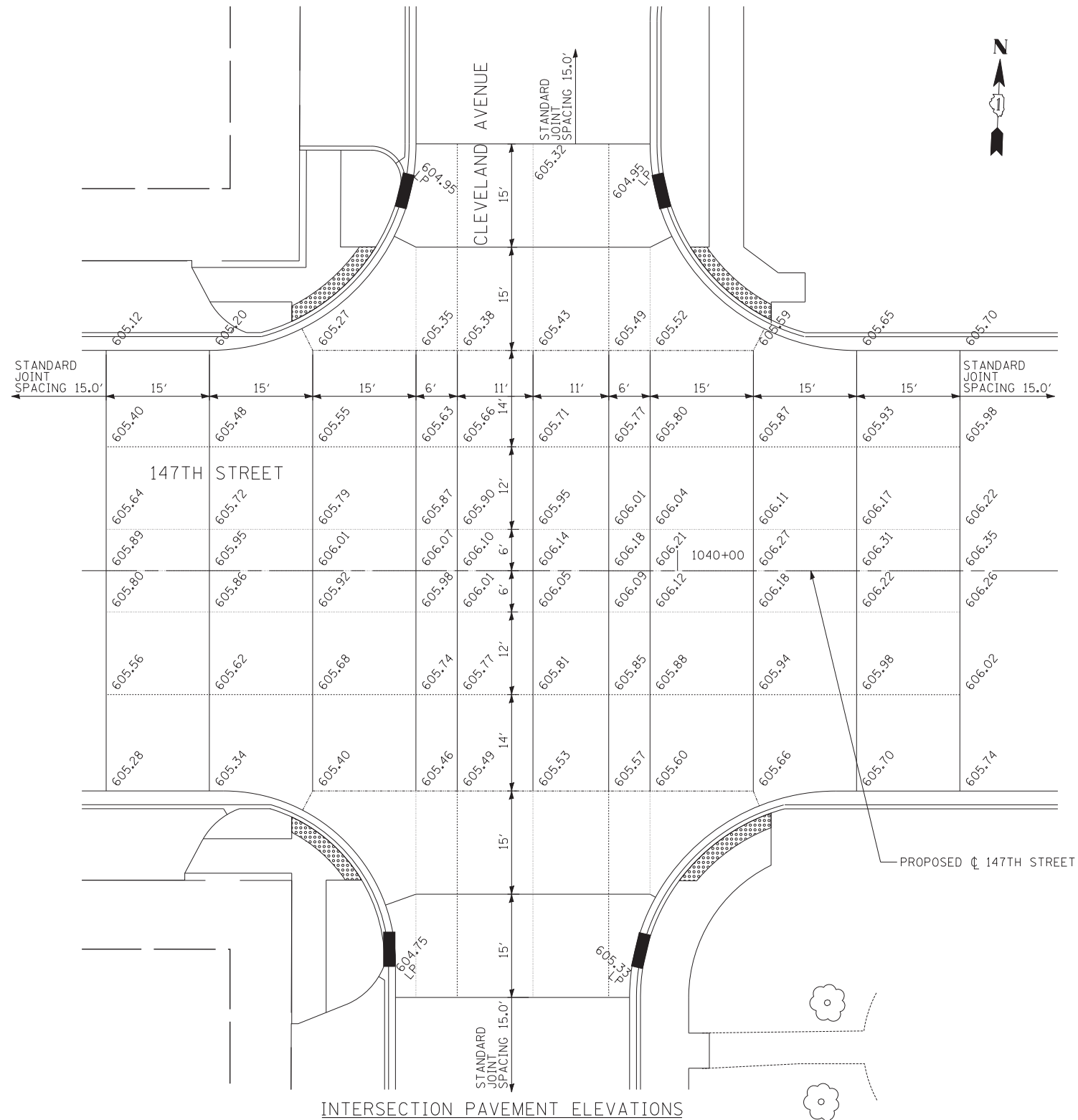


INTERSECTION LAYOUT PLAN

NOTES

1. ADA RAMPS PER IDOT STD 424001 PAID FOR AS PCC SIDEWALK 5".
2. ADA RAMPS PER IDOT STD 424031 PAID FOR AS CONCRETE MEDIAN SURFACE 4".

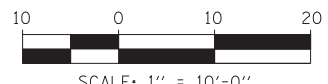
JOINTING NOTE:  
 - IDOT STANDARD 420001 APPLIES TO THE PCC ALTERNATE ONLY.  
 - PAVEMENT ELEVATION LOCATIONS ARE IDENTICAL IN THE PCC AND HMA PAVEMENT ALTERNATES.



INTERSECTION PAVEMENT ELEVATIONS

LEGEND

- C ROADWAY
- SAWED LONGITUDINAL JOINT (IDOT 420001)
- LONGITUDINAL CONSTRUCTION JOINT GROUTED-IN-PLACE TIE BAR (IDOT 420001)
- SAWED CONTRACTION JOINT (IDOT 420001)
- 1 INCH EXPANSION JOINT WITH SLEEPER SLAB (SEE DETAIL ON THIS SHEET)



**TYLIN INTERNATIONAL**

USER NAME =	DESIGNED - JDU	REVISED -
	DRAWN - JDU	REVISED -
PLOT SCALE =	CHECKED - JPM	REVISED -
PLOT DATE =	DATE - 5/23/2012	REVISED -

**STATE OF ILLINOIS  
 DEPARTMENT OF TRANSPORTATION**

<b>147TH STREET PROJECT</b>			
<b>INTERSECTION DETAILS - 147TH ST AND CLEVELAND AVE</b>			
SCALE: 1"=10'	SHEET NO. 1 OF 1 SHEETS	STA. 1039+15 TO STA. 1040+55	

F.A.I. R.E. XX	SECTION (0405-1 & 0506-2) R-1	COUNTY COOK	TOTAL SHEETS 577	SHEET NO. 310
CONTRACT NO. 60M57				
FED. ROAD DIST. NO. ILLINOIS FED. AID PROJECT				