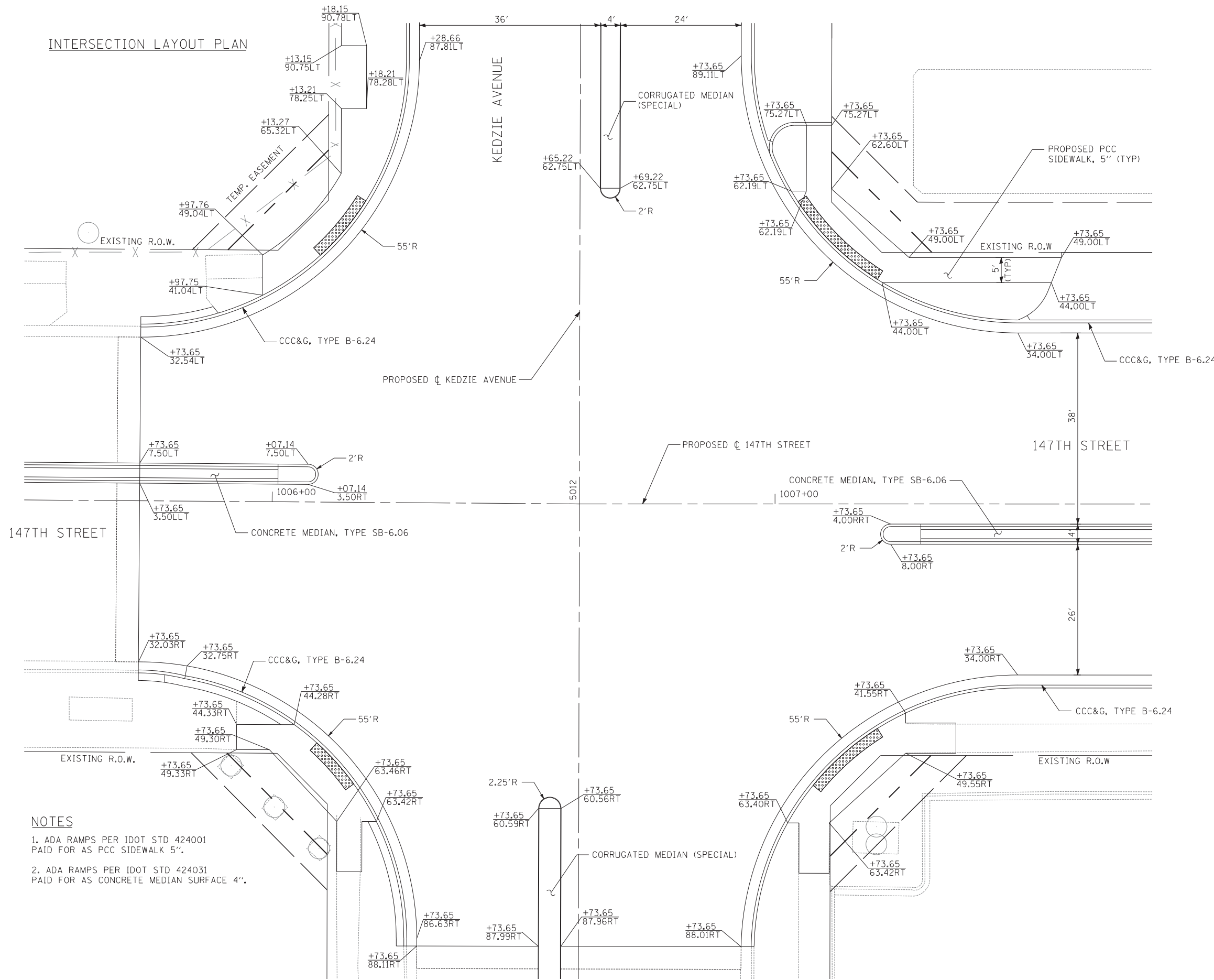


INTERSECTION LAYOUT PLAN



NOTES

1. ADA RAMPS PER IDOT STD 424001 PAID FOR AS PCC SIDEWALK 5".
2. ADA RAMPS PER IDOT STD 424031 PAID FOR AS CONCRETE MEDIAN SURFACE 4".



TYLIN INTERNATIONAL USER NAME = PLOT SCALE = PLOT DATE =	DESIGNED - JDU DRAWN - JDU CHECKED - JPM DATE - 5/23/2012	REVISED - REVISED - REVISED - REVISED -	STATE OF ILLINOIS DEPARTMENT OF TRANSPORTATION	147TH STREET PROJECT INTERSECTION DETAILS - 147TH ST AND KEDZIE		SECTION COUNTY TOTAL SHEETS SHEET NO.
				STA. 1005+50 TO STA. 1007+75	XX (0405-1 & 0506-2) R-1 COOK 577 314	
					SCALE: 1"=10' SHEET NO. 1 OF 2 SHEETS	CONTRACT NO. 60M57 FED. ROAD DIST. NO. ILLINOIS FED. AID PROJECT