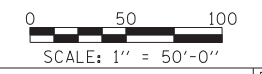
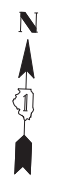


RUN TEMPORARY INTERCONNECT CABLE DOWN POLE TO PROPOSED HANDHOLE AND SPLICE INTO EXISTING INTERCONNECT CABLE. INTERCONNECT CABLE SHALL BE IN 2" GALVANIZED STEEL CONDUIT FROM HANDHOLE TO 10' VERTICAL UP TEMP WOOD POLE.

PROPOSED HANDHOLE TO INTERCEPT EXISTING CONDUIT (SHALL BE INSTALLED PER D1 STANDARD TRAFFIC SIGNAL DESIGN DETAILS SHEET 4 OF 6)



TYLIN INTERNATIONAL

USER NAME =	DESIGNED - MBR	REVISED -
	DRAWN - MBR	REVISED -
PLOT SCALE =	CHECKED - DAJ	REVISED -
PLOT DATE =	DATE - 5/23/2012	REVISED -

**STATE OF ILLINOIS
DEPARTMENT OF TRANSPORTATION**

**147TH STREET PROJECT
TEMPORARY TRAFFIC SIGNAL INTERCONNECT PLAN**

SCALE: 1" = 50' SHEET NO. 1 OF 6 SHEETS STA. 1000+00 TO STA. 1014+00

F.A.I. RTE.	SECTION	COUNTY	TOTAL SHEETS	SHEET NO.
XX	(0405-1 & 0506-2) R-1	COOK	577	393
FED. ROAD DIST. NO.			CONTRACT NO. 60M57	
ILLINOIS FED. AID PROJECT				