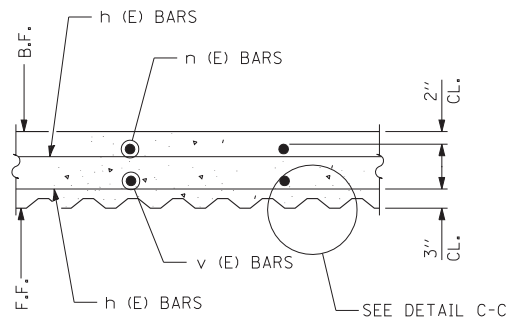
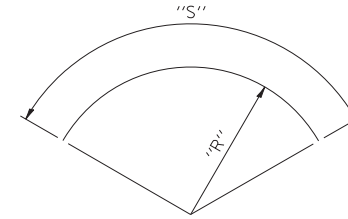


SECTION A-A



SECTION B-B



BAR	"R"	"S"
h ₁ (E)	7'-7"	23'-6"
h ₂ (E)	7'-7"	20'-10"
h ₃ (E)	7'-7"	17'-8"
h ₄ (E)	7'-7"	14'-6"
h ₅ (E)	7'-7"	11'-4"
h ₆ (E)	7'-7"	8'-2"
h ₇ (E)	7'-1 1/2"	22'-1"
h ₈ (E)	7'-1 1/2"	19'-7"
h ₉ (E)	7'-1 1/2"	16'-7"
h ₁₀ (E)	7'-1 1/2"	13'-7"
h ₁₁ (E)	7'-1 1/2"	10'-8"
h ₁₂ (E)	7'-1 1/2"	7'-8"
W ₁ (E)	7'-7"	24'-4"
W ₂ (E)	6'-8"	21'-7"
W ₃ (E)	5'-10"	18'-10"
W ₄ (E)	4'-9"	15'-5"
W ₅ (E)	3'-6"	11'-6"

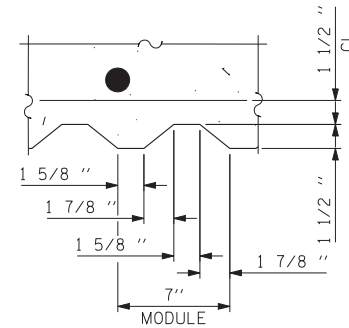
NOTE: "R" AND "S" MEASURED ALONG BAR CL

BAR	NO.	SIZE	LENGTH	SHAPE
h ₁ (E)	1	#5	23'-6"	
h ₂ (E)	1	#5	20'-10"	
h ₃ (E)	1	#5	17'-8"	
h ₄ (E)	1	#5	14'-6"	
h ₅ (E)	1	#5	11'-4"	
h ₆ (E)	1	#5	8'-2"	
h ₇ (E)	1	#4	22'-1"	
h ₈ (E)	1	#4	19'-7"	
h ₉ (E)	1	#4	16'-7"	
h ₁₀ (E)	1	#4	13'-7"	
h ₁₁ (E)	1	#4	10'-8"	
h ₁₂ (E)	1	#4	7'-8"	
n ₁ (E)	25	#6	7'-4"	
t ₁ (E)	25	#6	5'-1"	
v ₁ (E)	7	#4	5'-0"	
v ₂ (E)	8	#4	4'-8"	
W ₁ (E)	1	#5	24'-4"	
W ₂ (E)	1	#5	21'-7"	
W ₃ (E)	1	#5	18'-10"	
W ₄ (E)	1	#5	15'-5"	
W ₅ (E)	1	#5	11'-6"	

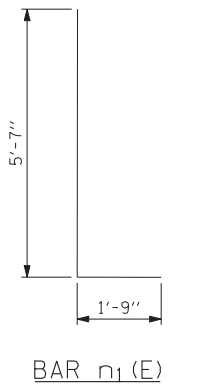
BARS w₁(E) THRU w₅(E) & h₁(E) THRU h₁₂(E)

BILL OF MATERIAL

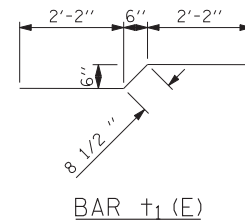
LIGHT TOWER, SERVICE PAD, SPECIAL WITH 5'-0" WALL



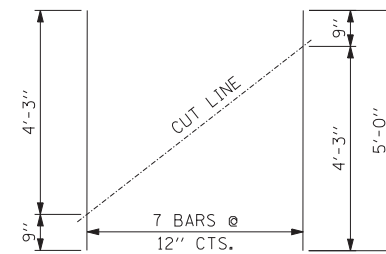
DETAIL C-C



BAR n₁(E)



BAR t₁(E)



ORDER v₁(E) BARS FULL LENGTH AND CUT TO FIT AS SHOWN. USE REMAINDER OF BARS AS INDICATED ON PLANS.

CUTTING DIAGRAM

BARS v₁(E)

ITEM	UNIT	TOTAL
WELDED WIRE FABRIC	SQ. YD.	15
WELDED WIRE FABRIC, SPECIAL	SQ. YD.	8
STRUCTURE EXCAVATION	CU. YD.	9
STRUCTURE EXCAVATION, SPECIAL	CU. YD.	12
CONCRETE STRUCTURES	CU. YD.	5
CONCRETE STRUCTURES, SPECIAL	CU. YD.	7.7
REINFORCEMENT BARS, EPOXY COATED, SPECIAL	POUND	775
RUSTICATION FINISH, SPECIAL	SQ. FT.	55
PROTECTIVE COAT	SO. YD.	16
PROTECTIVE COATING, SPECIAL	SO. YD.	29
SUB-BASE GRANULAR MATERIAL, TYPE B 6"	SO. YD.	11
SUB-BASE GRANULAR MATERIAL, TYPE B 6", SPECIAL	SO. YD.	13

NOTE: STRUCTURE EXCAVATION ONLY APPLIES TO PERMANENT LIGHT TOWER SERVICE PADS AND LIGHT TOWER SERVICE PADS, SPECIAL. TEMPORARY LIGHT TOWER SERVICE PADS TO BE PLACED ON TEMPORARY FILL.

BILL OF MATERIAL

ITEM	UNIT	TOTAL
LIGHT TOWER, SERVICE PAD	EACH	8
LIGHT TOWER, SERVICE PAD, SPECIAL	EACH	2

TOTAL BILL OF MATERIAL

1. F.F. and B.F. denote Front Face and Back Face respectively.
2. HMLT denotes High Mast Light Tower.
3. See IDOT Standard Drawing BE501 for additional High Mast Light Tower foundation and ground well details
4. Reinforcement Bars designated (e) shall be epoxy coated.
5. Refer to High Mast Light Tower Service Pad, Special & Retaining Wall Details 1 for location and orientation of conduit sleeves and grounding wells.
6. Contractor shall maintain integrity of adjacent pavement as may be required in excavating for HMLT service pad walls.
7. Provide Protective Coat to top, front face, exposed portion of back face, and ends of walls, and top and edges of pad.

TYLIN INTERNATIONAL

USER NAME =	DESIGNED - MI	REVISED -
PLOT SCALE =	DRAWN - JG	REVISED -
PLOT DATE =	CHECKED - JPM	REVISED -
	DATE - 5/23/2012	REVISED -

STATE OF ILLINOIS
DEPARTMENT OF TRANSPORTATION

147TH STREET PROJECT
HIGH MAST LIGHT TOWER SERVICE PAD & RETAINING WALL DETAILS

SCALE: SHEET NO. 2 OF 2 SHEETS STA. TO STA.

F.A.I. RTE.	SECTION	COUNTY	TOTAL SHEETS	SHEET NO.
XX	(0405-1 & 0506-2) R-1	COOK	577	451
FED. ROAD DIST. NO.			ILLINOIS FED. AID PROJECT	
			CONTRACT NO. 60M57	