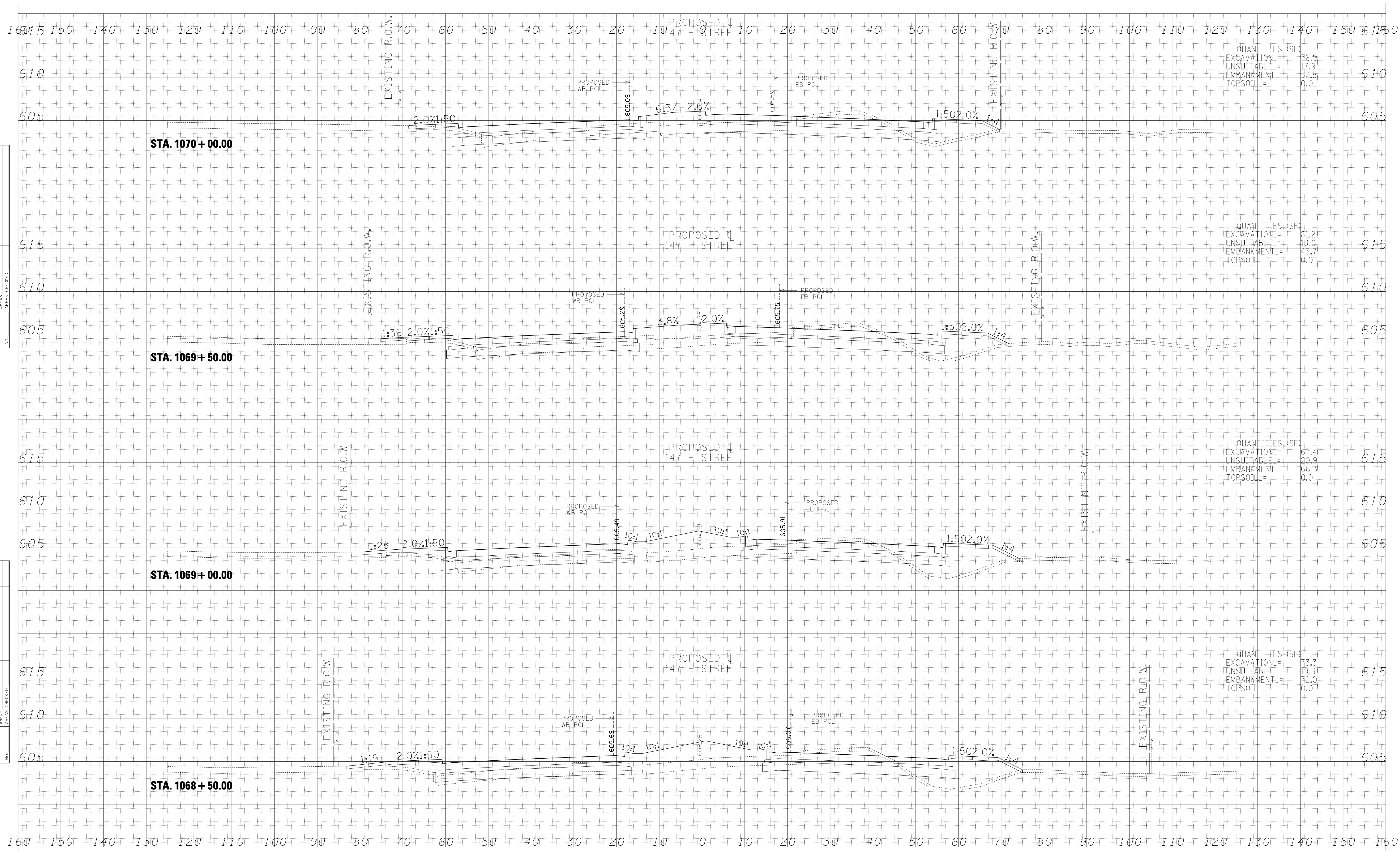


DATE	
BY	
FINAL SURVEY	SURVEYED
NOTE BOOK	PLOTTED
NO.	TEMPLATE
	AREAS CHECKED

DATE	
BY	
ORIGINAL SURVEY	SURVEYED
NOTE BOOK	PLOTTED
NO.	TEMPLATE
	AREAS CHECKED



QUANTITIES (SF)

EXCAVATION	=	76.9
UNSUITABLE	=	17.9
EMBANKMENT	=	32.5
TOPSOIL	=	0.0

QUANTITIES (SF)

EXCAVATION	=	81.2
UNSUITABLE	=	19.0
EMBANKMENT	=	45.7
TOPSOIL	=	0.0

QUANTITIES (SF)

EXCAVATION	=	67.4
UNSUITABLE	=	20.9
EMBANKMENT	=	66.3
TOPSOIL	=	0.0

QUANTITIES (SF)

EXCAVATION	=	73.3
UNSUITABLE	=	19.3
EMBANKMENT	=	72.0
TOPSOIL	=	0.0

TYLIN INTERNATIONAL

USER NAME	=		DESIGNED	-	JPM	REVISED	-	
			DRAWN	-	JDF	REVISED	-	
PLOT SCALE	=		CHECKED	-	JPM	REVISED	-	
PLOT DATE	=		DATE	-	2/24/2012	REVISED	-	

**STATE OF ILLINOIS
DEPARTMENT OF TRANSPORTATION**

**I-294 AT I-57 INTERCHANGE PROJECT
PROPOSED 147TH STREET CROSS SECTIONS**

SCALE: 1" = 10' H
SHEET NO. OF SHEETS STA. 1068+50.00 TO STA. 1070+00.00

F.A. RTE.	SECTION	COUNTY	TOTAL SHEETS	SHEET NO.
57	1414.2B	COOK	577	547
CONTRACT NO. 60M57				