

F.A.P. RTE.	SECTION	COUNTY	TOTAL SHEETS	SHEET NO.
330	3268F-T	COOK	9	1
		ILLINOIS	CONTRACT NO. 60T36	

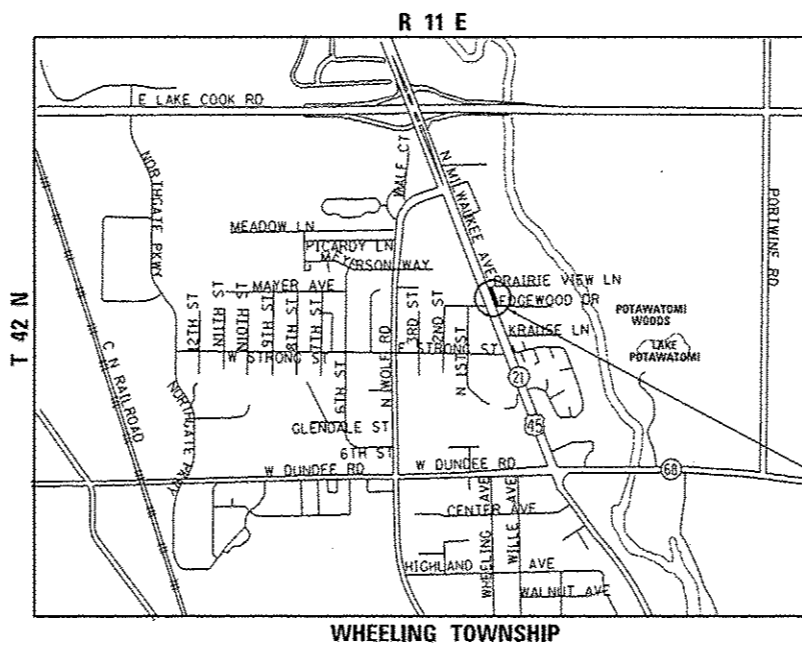
STATE OF ILLINOIS
DEPARTMENT OF TRANSPORTATION
DIVISION OF HIGHWAYS

PROPOSED HIGHWAY PLANS

F.A.P. ROUTE 330: US 45/ILL 21 (MILWAUKEE AVE)
NORTH OF IL 68 (DUNDEE ROAD)
SECTION: 3268F-T
DRAINAGE
COOK COUNTY
C-91-333-12

FOR INDEX OF SHEETS, SEE SHEET NO. 2

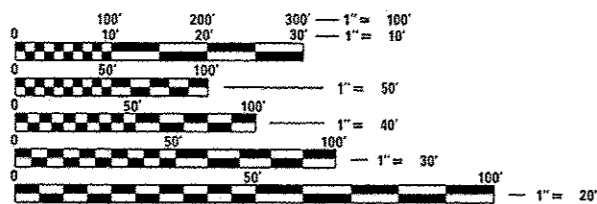
IMPROVEMENT LOCATED IN THE VILLAGE OF WHEELING



TRAFFIC DATA

2008 ADT = 30,700
POSTED SPEED LIMIT: 40 MPH

IMPROVEMENT LOCATION



FULL SIZE PLANS HAVE BEEN PREPARED USING STANDARD ENGINEERING SCALES. REDUCED SIZED PLANS WILL NOT CONFORM TO STANDARD SCALES. IN MAKING MEASUREMENTS ON REDUCED PLANS, THE ABOVE SCALES MAY BE USED.

J.U.L.I.E.
JOINT UTILITY LOCATION INFORMATION FOR EXCAVATION
1-800-892-0123
OR 811

GROSS AND NET LENGTH OF IMPROVEMENT = 75 FEET = 0.014 MILES

PROJECT ENGINEER ROBERT BORO (847) 705-4178
PROJECT MANAGER ISSAM RAYYAN

CONTRACT NO. 60T36

STATE OF ILLINOIS
DEPARTMENT OF TRANSPORTATION
DIVISION OF HIGHWAYS

SUBMITTED July 5, 2012
John P. ...
DEPUTY DIRECTOR OF HIGHWAYS, REGION ENGINEER

August 17, 2012
John D. ...
ENGINEER OF DESIGN AND ENVIRONMENT

August 17, 2012
William R. ...
DIRECTOR OF HIGHWAYS, CHIEF ENGINEER

PRINTED BY THE AUTHORITY
OF THE STATE OF ILLINOIS