

FOR INDEX OF SHEETS, SEE SHEET NO. 2
 FOR LIST OF HIGHWAY STANDARDS, SEE SHEET 2

STATE OF ILLINOIS
 DEPARTMENT OF TRANSPORTATION
 DIVISION OF HIGHWAYS

PLANS FOR PROPOSED
 FEDERAL-AID HIGHWAY

FAU 3860 (CHARLES J. MILLER ROAD)
 EAST OF GREEN STREET (FAU 0087) TO FAU 0089 (RIVER ROAD)
 RECONSTRUCTION

SECTION: 09-00372-00-PW
 PROJECT: HPP-1964(003)
 MCHENRY COUNTY, ILLINOIS
 JOB: C-91-102-07

F.A. RTE.	SECTION	COUNTY	TOTAL SHEETS	SHEET NO.
3860	09-00372-00-PW	MCHENRY	252	1
FED. ROAD DIST. NO.	ILLINOIS	CONTRACT NO.	63633	

STRUCTURE INFORMATION:

EXISTING SN 056-3149:
 EXISTING STRUCTURE IS A FIVE SPAN STRUCTURE CONSIST OF A CAST IN PLACE CONCRETE DECK ON STEEL PLATE GIRDERS WITH AN OUT-TO-OUT WIDTH OF 44'-2" AND A TOTAL LENGTH OF 658'-6 1/2" BK. BK. ABUTMENTS. THE SKEW IS 0 DEGREES. THE SUBSTRUCTURE CONSIST OF HAMMERHEAD PIERS FOUNDED ON STEEL H-PILES, AND STUB ABUTMENTS FOUNDED ON H-PILES. STRUCTURE TO REMAIN.

PROPOSED SN 056-3190:
 PROPOSED STRUCTURE CONSIST OF A CAST IN PLACE CONCRETE DECK ON STEEL PLATE GIRDERS WITH AN OUT-TO-OUT WIDTH OF 31'-2" AND A TOTAL LENGTH OF 658'-6 1/2" BK. BK. ABUTMENTS. THE SKEW IS 0 DEGREES. THE SUBSTRUCTURE CONSIST OF HAMMERHEAD PIERS FOUNDED ON STEEL H-PILES, AND STUB ABUTMENTS FOUNDED ON H-PILES.

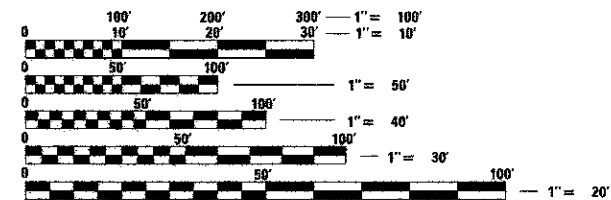
TRAFFIC DATA

ADT:			
CHARLES J. MILLER ROAD	20,700 VPD (2009)	34,000 VPD (2030)	
RIVER ROAD	18,400 VPD (2009)	29,700 VPD (2030)	

ROADWAY	POSTED SPEED	DESIGN SPEED
CHARLES J. MILLER ROAD	45 MPH (EXISTING/ PROPOSED)	45 MPH
RIVER ROAD	45 MPH (EXISTING/ PROPOSED)	45 MPH

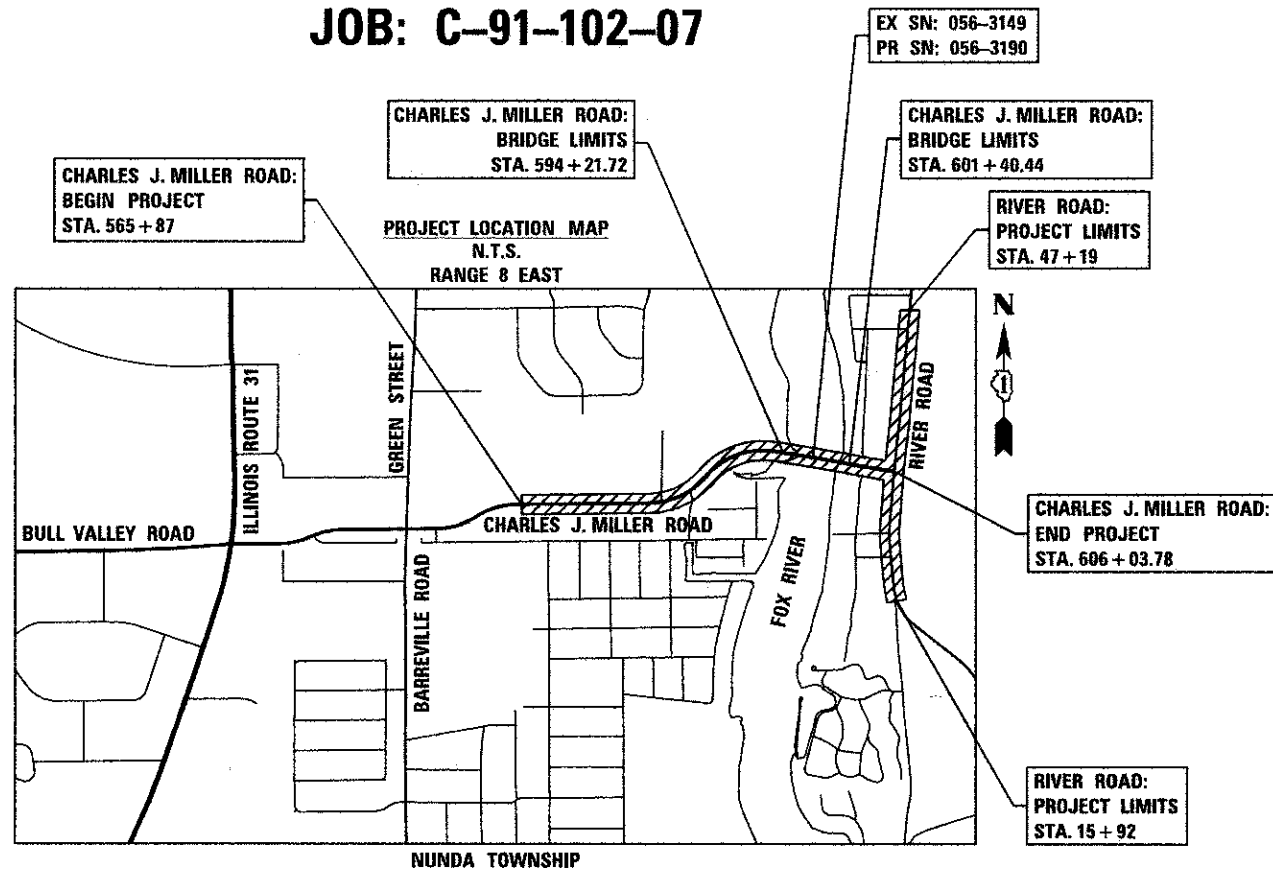
DESIGN DESIGNATION

FAU 3860 (CHARLES J. MILLER ROAD) - URBAN MINOR ARTERIAL



FULL SIZE PLANS HAVE BEEN PREPARED USING STANDARD ENGINEERING SCALES. REDUCED SIZED PLANS WILL NOT CONFORM TO STANDARD SCALES. IN MAKING MEASUREMENTS ON REDUCED PLANS, THE ABOVE SCALES MAY BE USED.

J.U.L.I.E.
 JOINT UTILITY LOCATION INFORMATION FOR EXCAVATION
 CALL 811



PROJECT LENGTH
 GROSS AND NET LENGTH OF PROJECT = 4,016.78 FT (0.76 MI)



STATE OF ILLINOIS
 DEPARTMENT OF TRANSPORTATION
 DIVISION OF HIGHWAYS

APPROVED July 9 2012
Joseph R. Korpakabi Jr.
 COUNTY ENGINEER, MCHENRY COUNTY

PASSED July 20 2012
C. Hest C. J. Hest
 DISTRICT ONE ENGINEER OF LOCAL ROADS AND STREETS

RELEASING FOR BID
 BASED ON LIMITED REVIEW July 23, 2012
John F. ...
 DEPUTY DIRECTOR OF HIGHWAYS, REGION ONE ENGINEER

PRINTED BY THE AUTHORITY
 OF THE STATE OF ILLINOIS

PROFESSIONAL ENGINEER'S SIGN & SEAL
 EXCLUDING SHEET(S):

Jeffery L. Pisha 7/10/2012
 JEFFERY L. PISHA, P.E.
 EXPIRES: 11-30-13

STRUCTURAL ENGINEER'S SIGN & SEAL
 FOR STRUCTURAL SHEET(S): S-1 THRU S-41
SB-1 THRU SB-7
SC-1 THRU SC-3

Robert G. Davies 7/10/2012
 ROBERT G. DAVIES, P.E., S.E.
 EXPIRES: 11-30-12

420 NORTH FRONT STREET, SUITE 100 | MCHENRY, ILLINOIS 60050
 Phone: 815.385.1778 | Toll Free: 800.728.7805 | Fax: 815.385.1781 | HRGreen.com
 ILLINOIS PROFESSIONAL DESIGN FIRM #184-001322

PROJECT ENGINEER: D. JOHANSON
 PROJECT MANAGER: J. PISHA

CONTRACT NO. 63633

PROGRAM AND OFFICE ENGINEER: CHARLES F. RIDDLE, P.E. 847-705-1406 SCHAUMBURG, IL

COMPANY NAME:
 PROJECT CONTACT:
 CLIENT: BLOTTEN
 FILE NAME:
 PLOT DRIVER:
 PEN TABLE:
 7/10/2012 3:43:46 AM
 09071-cv-01.dgn
 pctcat
 standards-trans.tbl