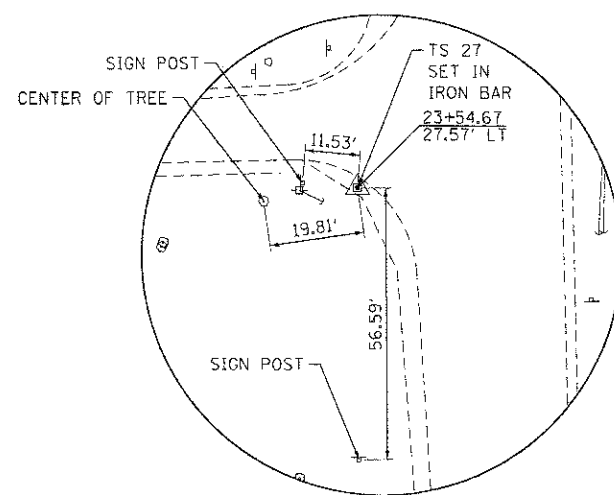
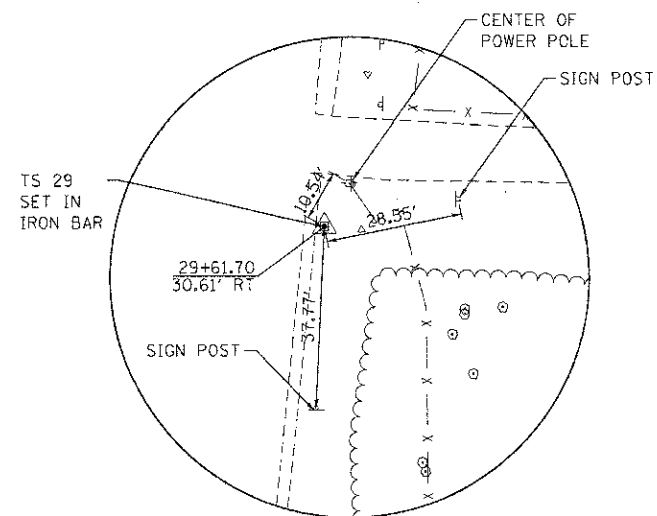


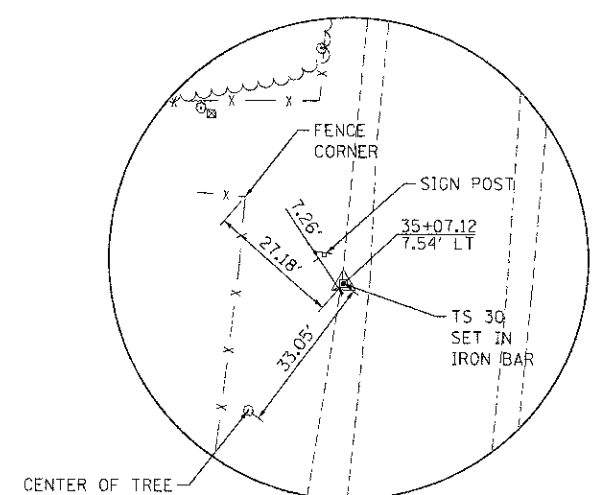
TRAVERSE STATION #11
N 2060568.06
E 1005469.53



TRAVERSE STATION #27
N 2059725.79
E 1007035.69



TRAVERSE STATION #29
N 2060329.09
E 1007132.72



TRAVERSE STATION #30
N 2060875.69
E 1007145.36

COMPANY NAME: HRGreen.com
PROJECT CONTACT: Jettana
DATE PLOTTED: 7/23/2012 11:22:26 AM
FILE NAME: 090071-1a-03.dgn
PLOT DRIVER: pdfplot
PEN TABLE: s:\standard-trans.tbl



USER NAME = jettana	DESIGNED - JPA	REVISED -
FILE NAME = 090071-1a-03.dgn	DRAWN - SVJ	REVISED -
PLOT SCALE = N.T.S.	CHECKED - JLP	REVISED -
PLOT DATE = 7/23/2012	DATE - 7/23/12	REVISED -

**MCHENRY COUNTY
DIVISION OF TRANSPORTATION**

**ALIGNMENT, TIES AND BENCHMARKS
CHARLES J. MILLER ROAD ROADWAY IMPROVEMENTS**

SCALE: N.T.S. SHEET NO. 2 OF 4 SHEETS STA. TO STA.

F.A.U. RTE.	SECTION	COUNTY	TOTAL SHEETS	SHEET NO.
3860	09-00372-00-PW	MCHENRY	252	20
FED. ROAD DIST. NO. ILLINOIS FED. AID PROJECT			CONTRACT NO. 63633	