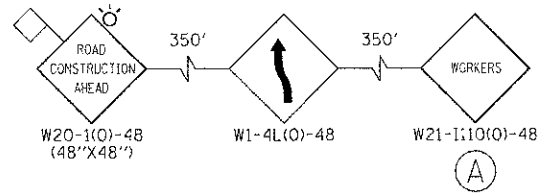


ADVANCED SIGNING DETAIL



G20-1103(0)-3660
END WORK ZONE
SPEED LIMIT

CELL PHONE
USE
PROHIBITED
R2-1110

WORK ZONE
SPEED LIMIT
35
BEGINS
#375 FINE
MINIMUM

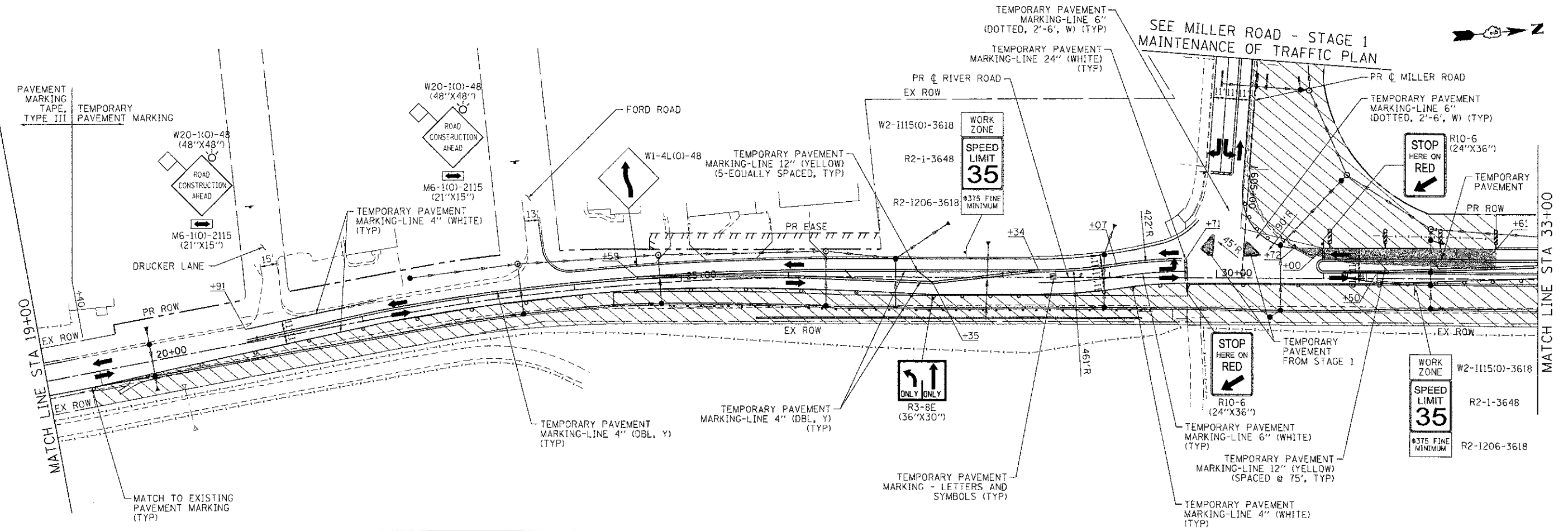
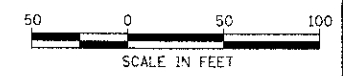
W2-1115(0)-3618
R2-1-3648
W2-1113(0)-3612
R2-1206-3618

SEE ADVANCED
SIGNING DETAIL
(A)

MATCH LINE STA 19+00

LEGEND:

	TEMPORARY PAVEMENT		TYPE II BARRICADES OR DRUMS WITH STEADY BURNING LIGHTS @ 50 FT CENTERS ALONG ROADWAY TANGENTS, 25 FT CENTERS ALONG TAPERS, AND 12 FT CENTERS ALONG RADII		VERTICAL PANEL WITH STEADY BURNING LIGHT @ 50 FT CENTERS
	WORK ZONE		TYPE III BARRICADES WITH FLASHING LIGHTS		
	DIRECTION OF TRAFFIC				



COMPANY NAME: HRGreen
PROJECT CONTACT: J. Jettone
CLIENT: MCHENRY COUNTY
DATE: 7/23/2012 11:45:14 AM
FILE NAME: 090071-mchc11-08.dgn
PLOT DRIVER: nrf.plt
PEN TABLE: standard.ctb

HRGreen.com
1000s Professional Design Firm
184-001322

USER NAME = jettone	DESIGNED - JPA	REVISED -
FILE NAME = 090071-mchc11-08.dgn	DRAWN - SVJ	REVISED -
PLOT SCALE = 1" = 60'	CHECKED - JLP	REVISED -
PLOT DATE = 7/23/2012	DATE - 7/23/12	REVISED -

**MCHENRY COUNTY
DIVISION OF TRANSPORTATION**

**SUGGESTED MAINTENANCE OF TRAFFIC - STAGE 1A
CHARLES J. MILLER ROAD ROADWAY IMPROVEMENTS**

F.A.U. RTE. 3860	SECTION 09-00372-00-PW	COUNTY MCHENRY	TOTAL SHEETS 252	SHEET NO. 39
CONTRACT NO. 63633			FED. ROAD DIST. NO. ILLINOIS FED. AID PROJECT	

SCALE: 1" = 50' SHEET NO. 5 OF 14 SHEETS STA. TO STA.