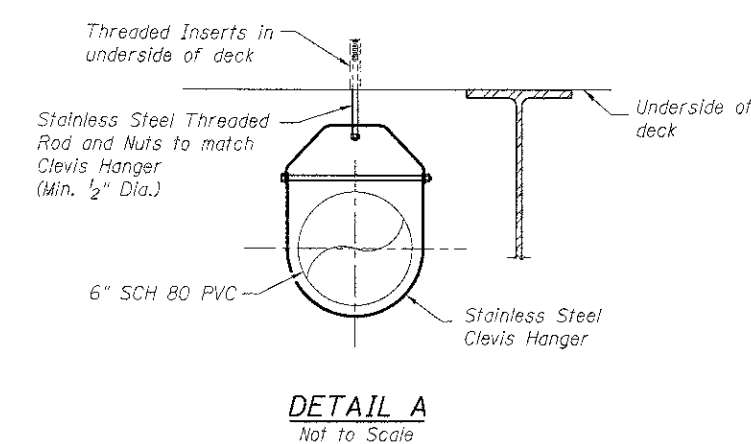
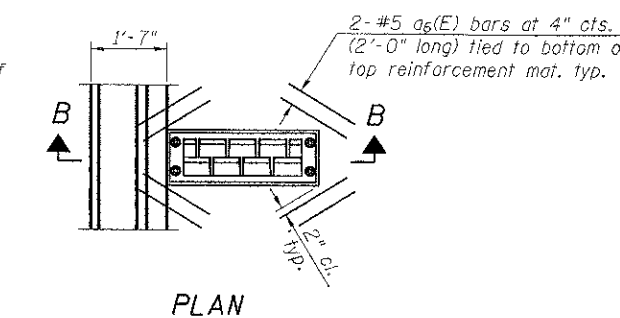
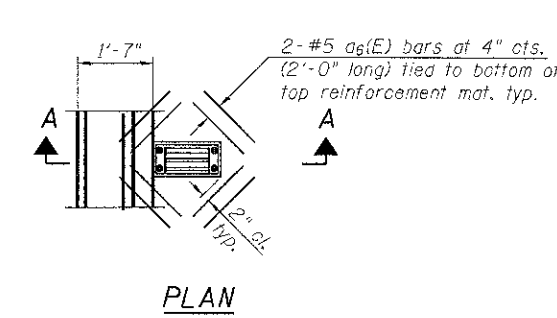
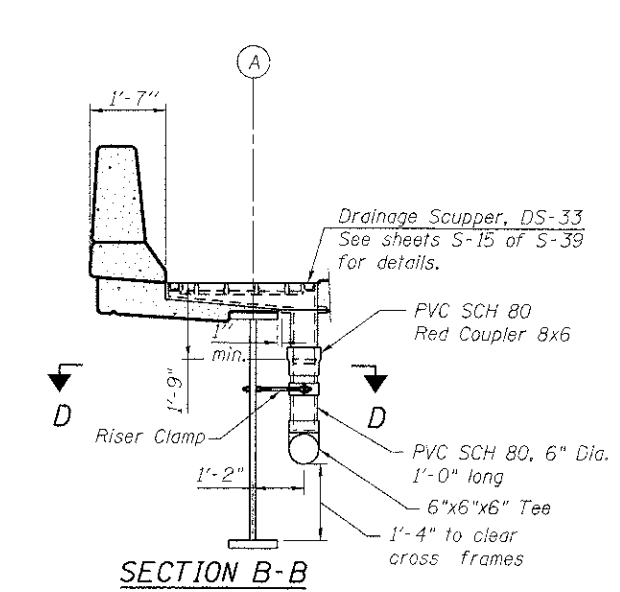
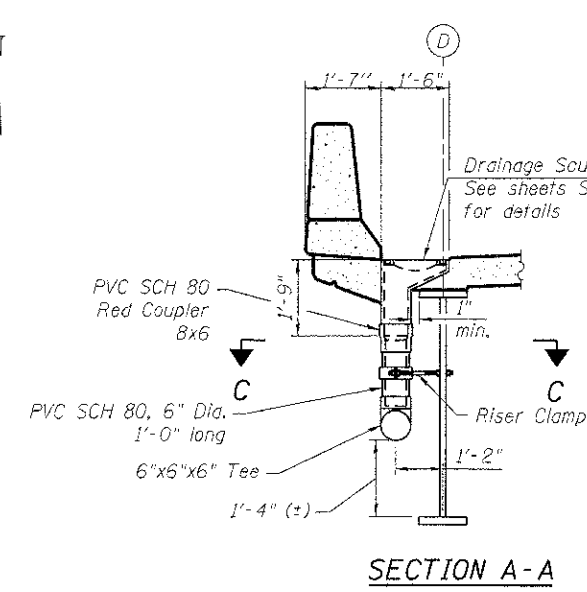
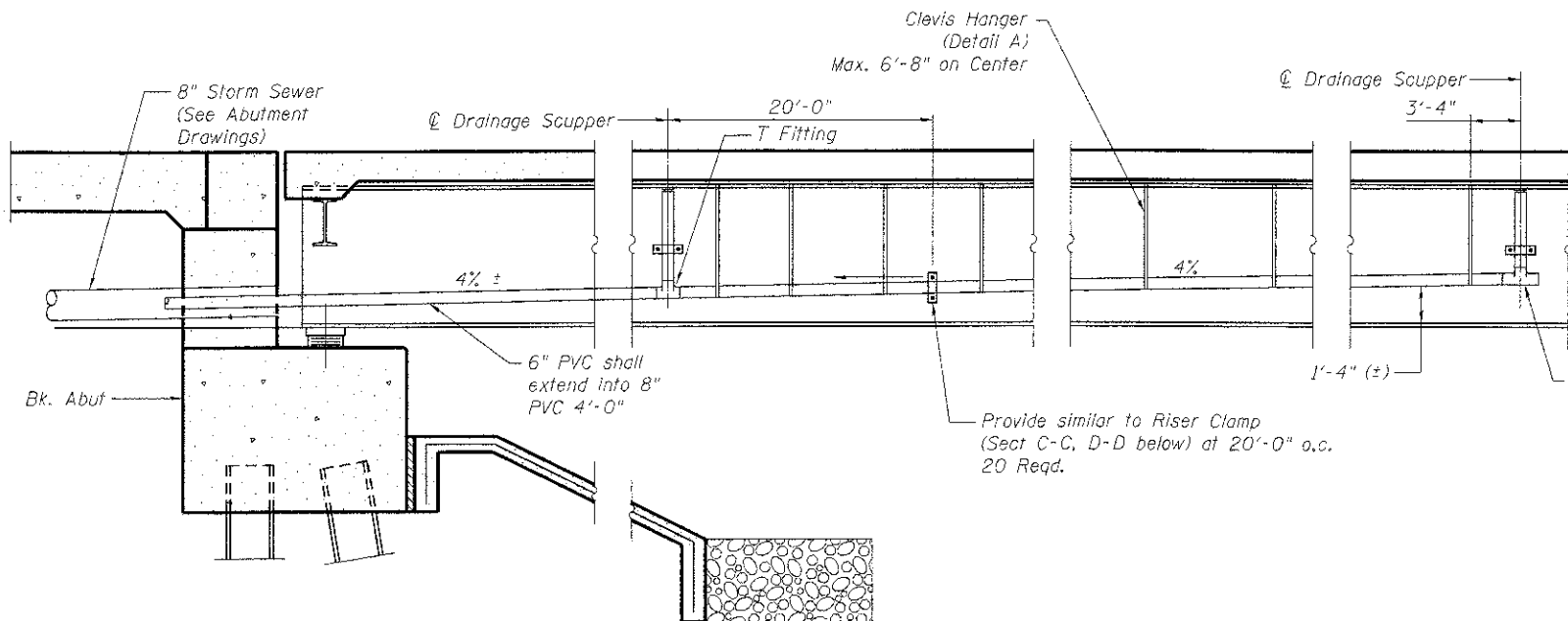
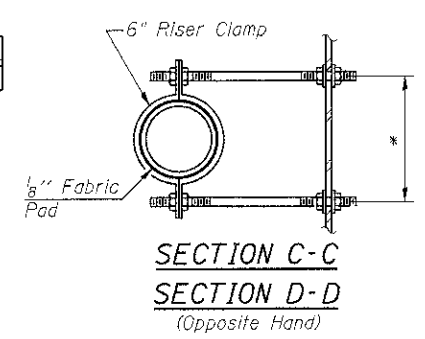


**DECK DRAINAGE SYSTEM
HALF PLAN**
Symmetrical about \bar{C} of Bridge



TOTAL BILL OF MATERIAL

ITEM	UNIT	TOTAL
Drainage System	L. Sum	1



* Dimension as required by Riser Clamp

Note: Cut longitudinal reinforcement to clear drainage scuppers.

Note: Cut longitudinal reinforcement to clear drainage scuppers.

**DECK DRAINAGE SYSTEM
STRUCTURE NO. 056-3190**

DESIGNED	SSM
CHECKED	RGD
DRAWN	WJH
CHECKED	RGD

HRGreen
HRGreen.com
Illinois Professional Design Firm
184-001322

WB CHARLES J. MILLER ROAD BRIDGE		DATE: 7/23/12	
SHEET NO. S-13	F.A.U. RTE. 3860	SECTION 09-00372-00-PW	COUNTY McHENRY
S-41 SHEETS	TOTAL SHEETS 252		SHEET NO. 136
FED. ROAD DIST. NO. 1 ILLINOIS			CONTRACT NO. 63633
ILLINOIS FED. AID PROJECT			