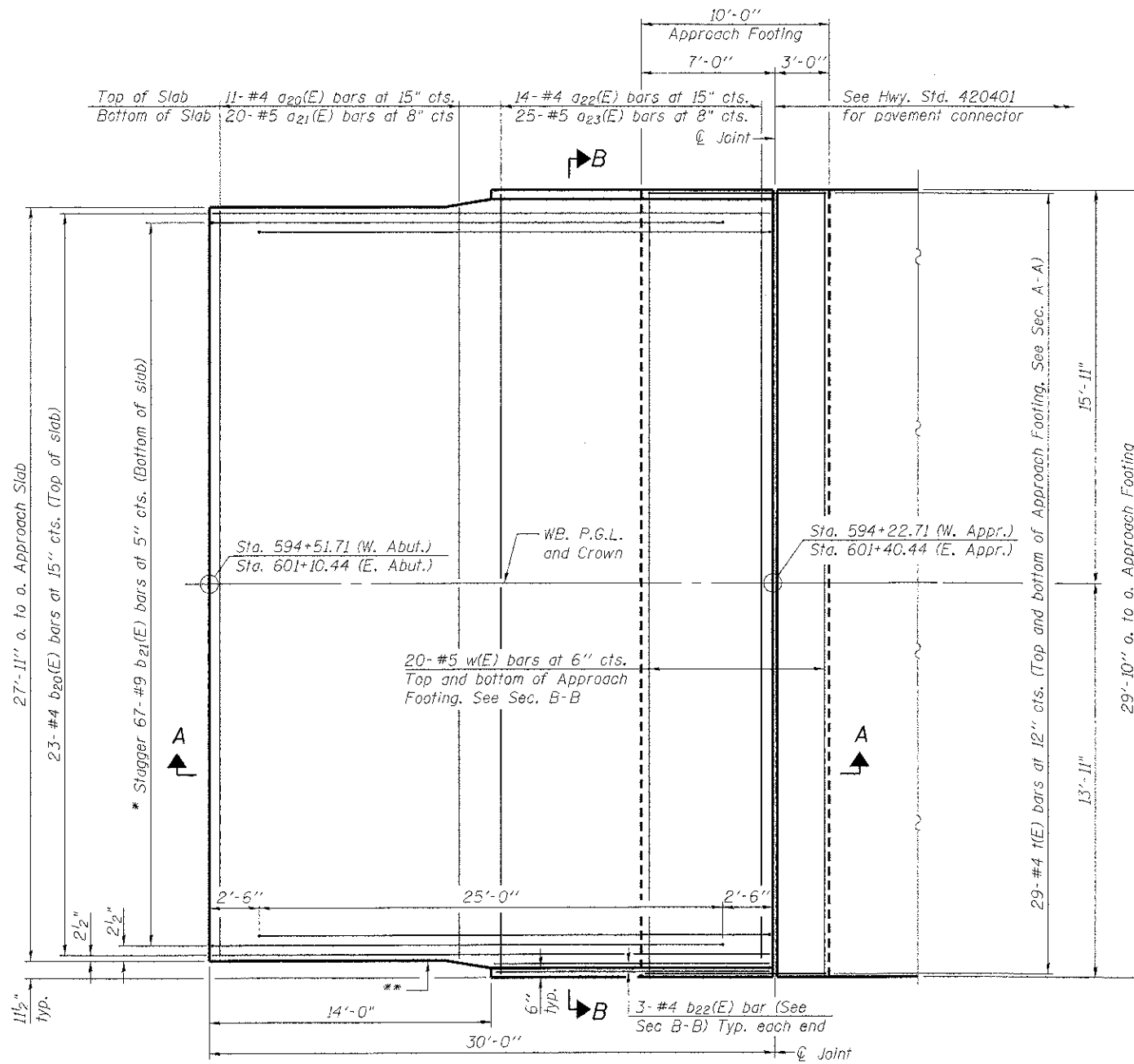
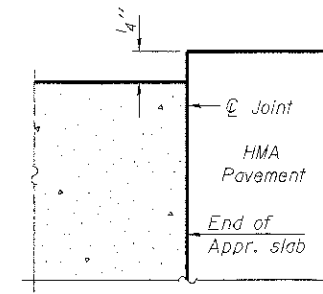


Notes:
 See sheet S-17 of S-41 for Sections A-A & B-B.
 $a_{20}(E)$ and $a_{21}(E)$ bar spacings measured along C.Rdwy.
 East Approach Pavement shown. West Approach Pavement
 opposite hand.



PLAN

- * 7/11 #9 $b_{21}(E)$ bars as required to maintain clearance.
- ** 1/2" Closed Cell Joint Filler according to Article 1051.08 of the Standard Specifications; Full depth of slab, full length of parapet. Typical each parapet.



FLEXIBLE PAVEMENT

DETAIL A

BRIDGE APPROACH SLAB DETAILS
 STRUCTURE NO. 056-3190

DESIGNED	SSM
CHECKED	RGD
DRAWN	WJH
CHECKED	RGD

BA-0 11-1-09



HRGreen.com
 Illinois Professional Design Firm
 # 184-001322

WB CHARLES J. MILLER ROAD BRIDGE

DATE: 7/23/12

SHEET NO. S-16 S-41 SHEETS	F.A.U. R.F.E.	SECTION	COUNTY	TOTAL SHEETS	SHEET NO.
	3860	09-00372-00-PW	McHENRY	252	139
CONTRACT NO.			63633		
FED. ROAD DIST. NO. 1 ILLINOIS FED. AID PROJECT					