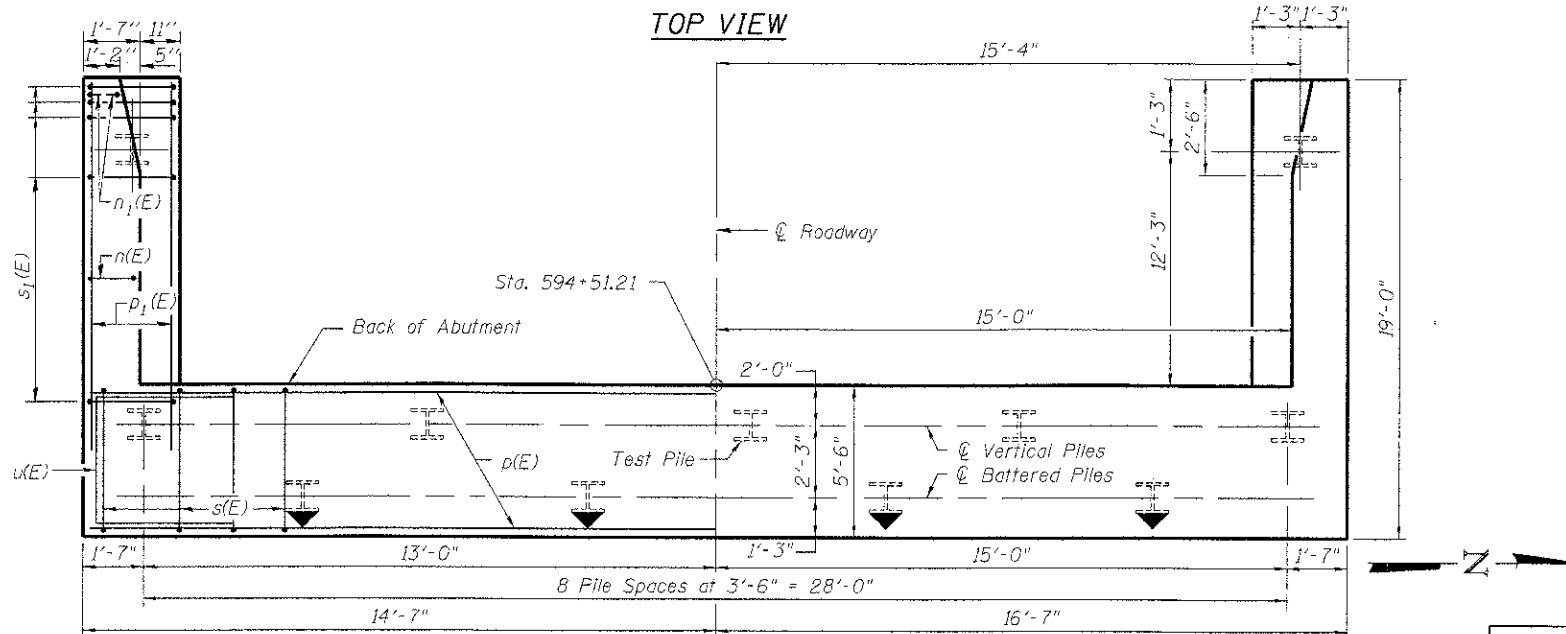
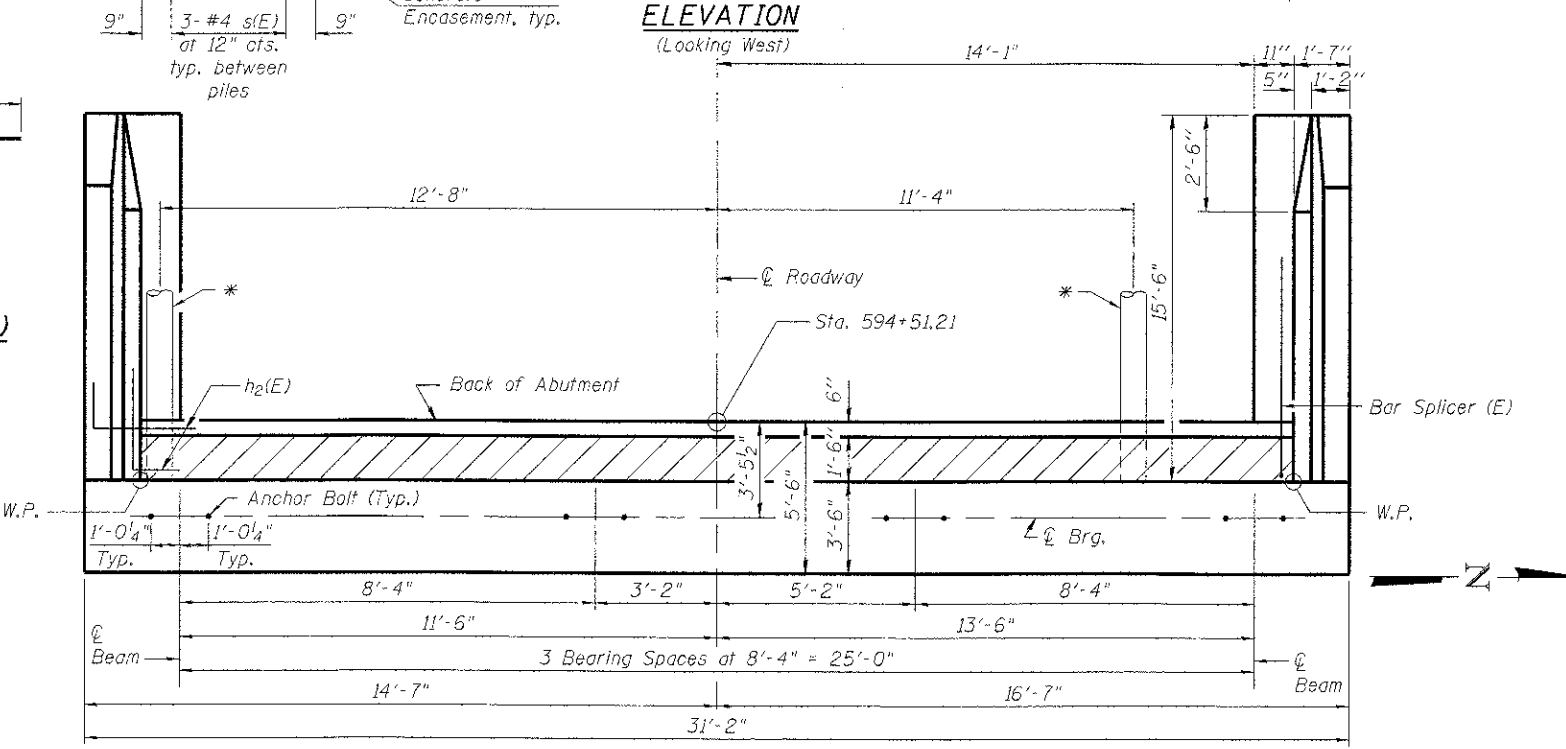
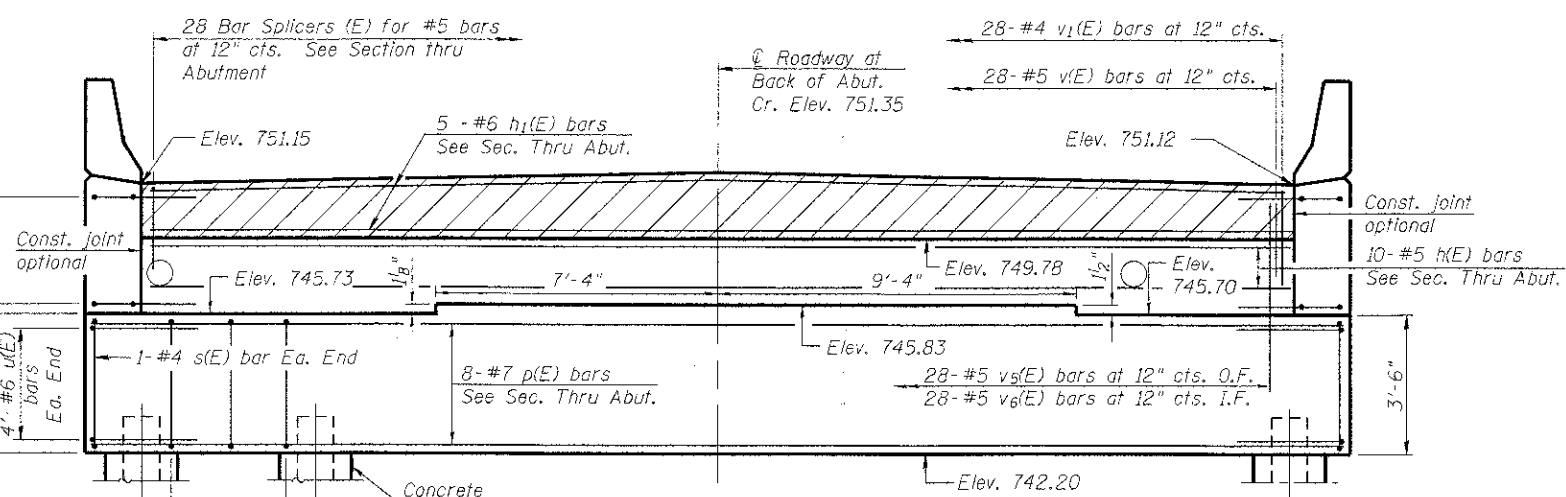


**PILE DATA**  
 Type: Steel-HP 10x42  
 Nominal Required Bearing: 280 kips  
 Factored Resistance Available: 137 kips  
 Est. Length: 62 ft.  
 No. Production Piles: 10  
 No. Test Piles: 1

Note:  
 Piles for West Abutment shall be driven through 18 inch diameter pre-cored holes extending 12 inches into the existing grade, considering removal of topsoil, according to Article 512.09(c) of the Standard Specifications. Cost included in Driving Piles.



\* Storm Sewer, Class B, Type 2, 8" PVC.  
 Invert Elev. at Backwall = 747.65  
 See West Approach Slab Plans (S-08) for Layout, Coordinate W/6" PVC on Deck Drainage Plan, End Cross Frame and Trough Detail. Pitch at 4%.

**ABUTMENT BILL OF MATERIAL**

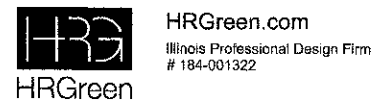
Bar	No.	Size	Length	Shape
h (E)	10	#5	27'-8"	—
h1 (E)	5	#6	27'-8"	—
h2 (E)	24	#5	4'-4"	└
h3 (E)	24	#4	15'-2"	—
h4 (E)	16	#4	15'-2"	—
n (E)	26	#6	13'-10"	—
n1 (E)	12	#6	6'-11"	—
p (E)	8	#7	30'-10"	—
p1 (E)	12	#7	18'-8"	—
s (E)	26	#4	17'-5"	└
s1 (E)	34	#4	9'-5"	└
u (E)	8	#6	10'-0"	—
v (E)	28	#5	3'-10"	└
v1 (E)	28	#4	2'-11"	—
v2 (E)	32	#6	8'-0"	—
v3 (E)	6	#6	7'-7"	—
v4 (E)	26	#6	8'-4"	—
v5 (E)	28	#5	5'-8"	—
v6 (E)	28	#5	7'-4"	—
Structure Excavation		Cu. Yd.	13	
Concrete Structures		Cu. Yd.	50.8	
Reinforcement Bars, Epoxy Coated		Pound	4,600	
Furnishing Steel Piles HPI0X42		Foot	620	
Driving Piles		Foot	620	
Test Pile Steel HPI0X42		Each	1	
Concrete Encasement		Cu. Yd.	3.9	
Concrete Sealer		Sq. Ft.	392.2	

For details of Bar Splicers, see S-34 of S-41.  
 For details of piles and Concrete Encasement, see sheet S-35 of S-41.

**WEST ABUTMENT PLAN AND ELEVATION  
 STRUCTURE NO. 056-3190**

DESIGNED	SSM
CHECKED	RGD
DRAWN	WJH
CHECKED	RGD

**PLAN - PILE CAP**



WB CHARLES J. MILLER ROAD BRIDGE		DATE: 7/23/12	
SHEET NO. S-26	F.A.U. RTE. 3860	SECTION 09-00372-00-PW	COUNTY McHENRY
S-41 SHEETS	TOTAL SHEETS 252		SHEET NO. 149
CONTRACT NO. 63633			FED. ROAD DIST. NO. 1 ILLINOIS FED. AID PROJECT