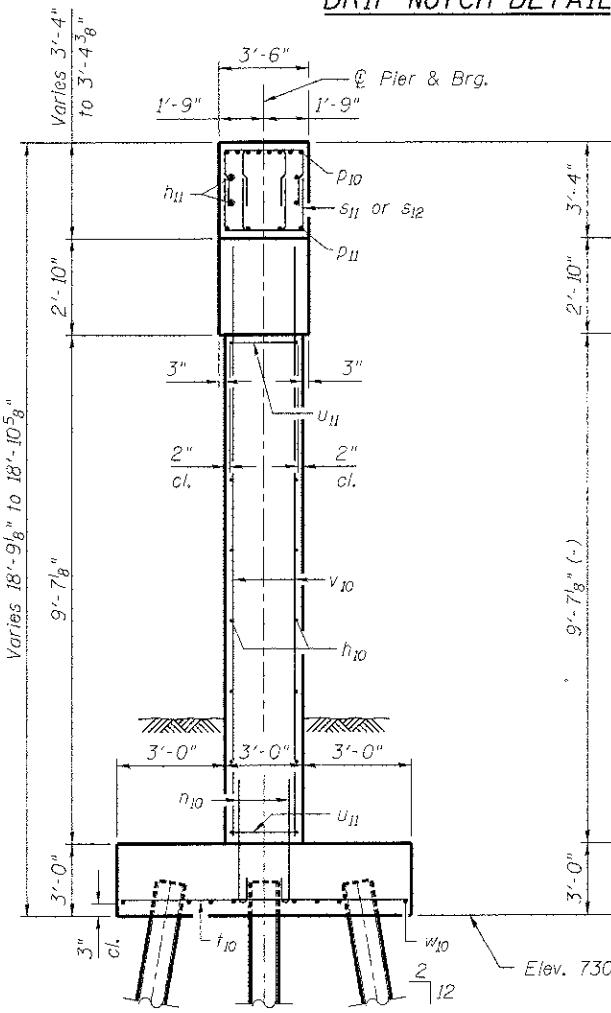
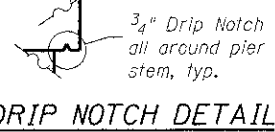


Notes:
 Space reinforcement in cap to miss anchor bolts.
 Four steps monolithically with cap.
 For details of piles, see sheet S-35 of S-41.

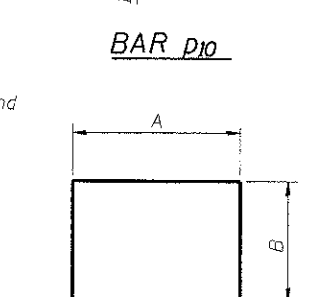
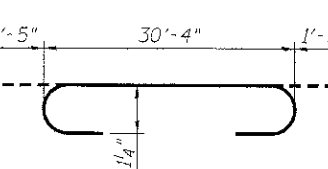
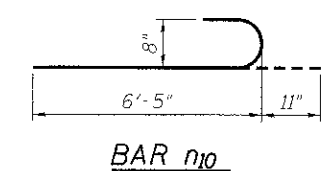
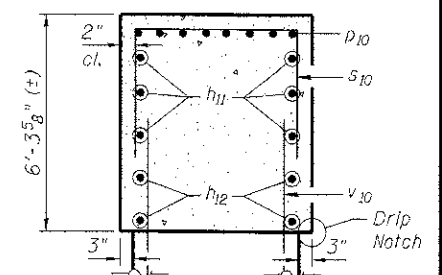
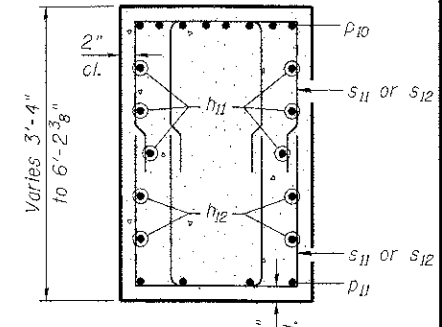
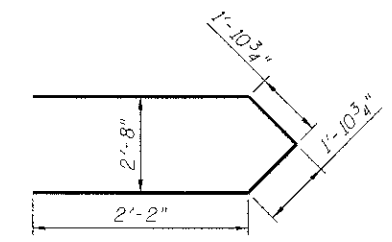
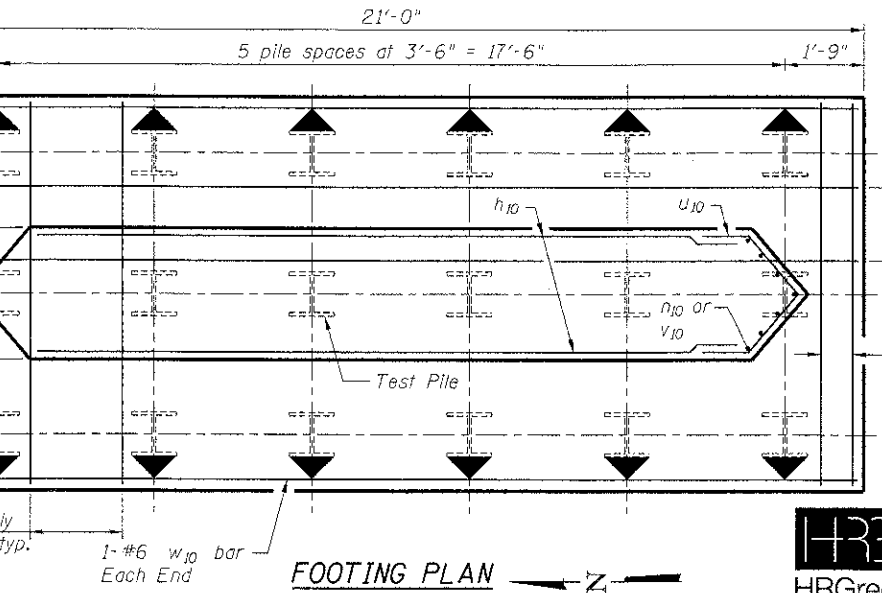
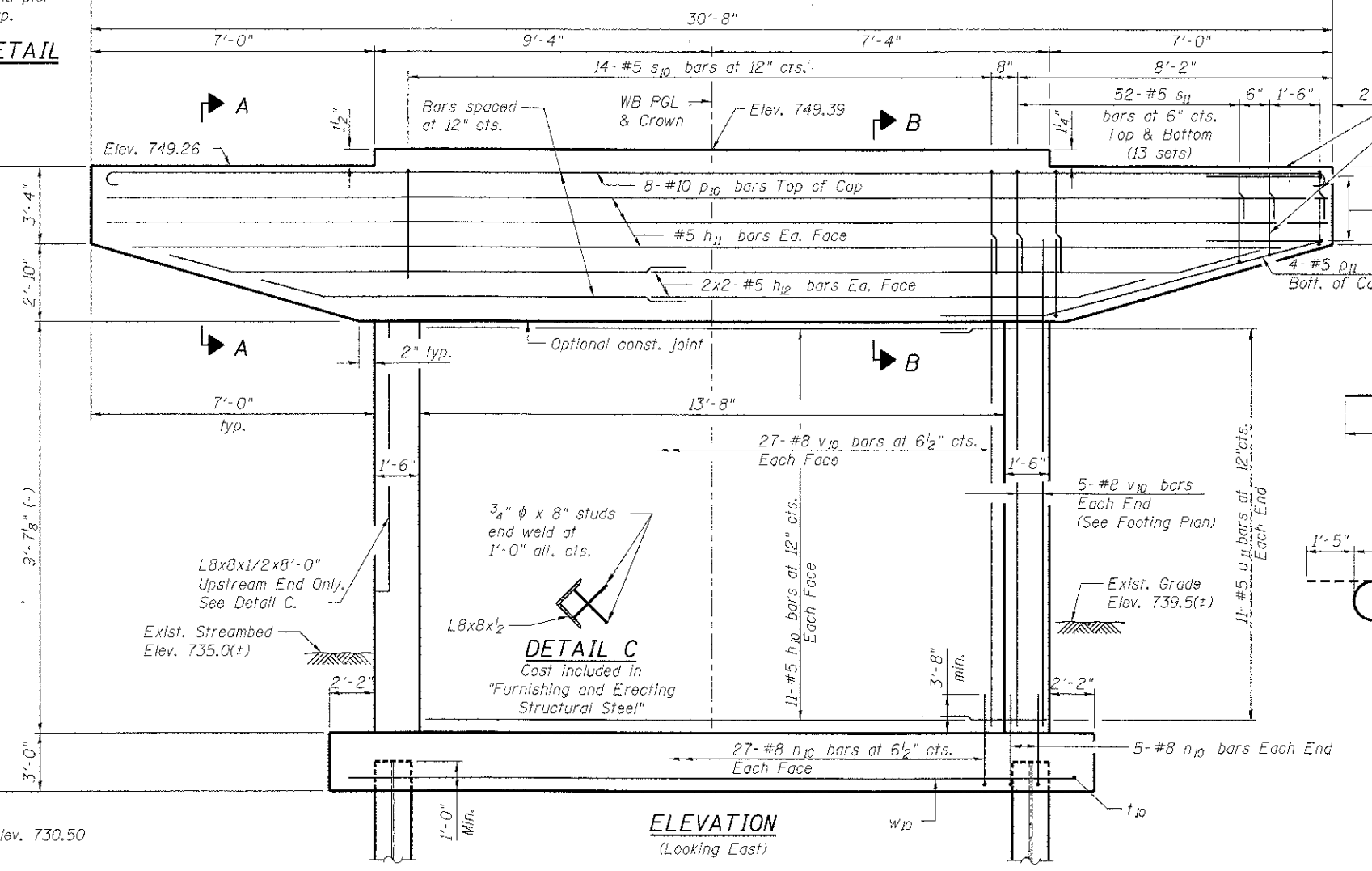
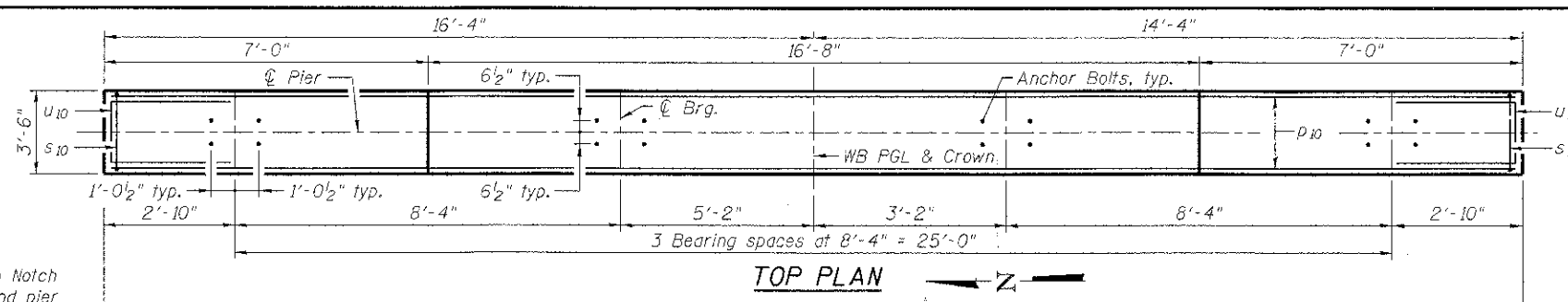
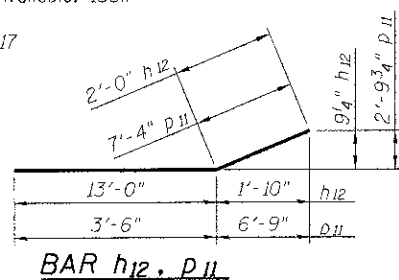
MINIMUM BAR LAP
(Pier)

#5 bar = 2'-2"
 #8 bar = 3'-8"



PILE DATA

Type: Steel - HP12x53
 Nominal Required Bearing: 310k
 Factored Resistance Available: 155k
 Est. Length: 40'
 No. Production Piles: 17
 No. Test Piles: 1



A & B DIMENSIONS

Bar	A	B
u_{10}	3'-0 1/2"	2'-1"
s_{10}	3'-2"	5'-5"
s_{11}	2'-4"	4'-0"
s_{12}	2'-4"	3'-1"

PIER 1 BILL OF MATERIAL

Bar	No.	Size	Length	Shape
n_{10}	22	#5	13'-4"	—
h_{11}	6	#5	30'-4"	—
h_{12}	8	#5	15'-0"	—
p_{10}	64	#8	7'-4"	—
p_{11}	8	#5	10'-10"	—
s_{10}	14	#5	14'-0"	—
s_{11}	104	#5	10'-4"	—
s_{12}	16	#5	8'-6"	—
t_{10}	36	#8	8'-8"	—
u_{10}	8	#6	7'-3"	—
u_{11}	22	#5	8'-2"	—
v_{10}	64	#8	12'-6"	—
w_{10}	8	#6	20'-8"	—

Concrete Structures	Cu. Yd.	59.5
Reinforcement Bars	Pound	8,070
Furnishing Steel Piles HP12x53	Foot	680
Driving Piles	Foot	680
Test Pile Steel HP12x53	Each	1
Cofferdam (Type 2) (Location - D)	Each	1
Cofferdam Excavation	Cu. Yd.	118
Seal Coat Concrete	Cu. Yd.	36.1

**PIER 1 DETAILS
 STRUCTURE NO. 056-3190**

DESIGNED	JMW
CHECKED	RGD
DRAWN	WJH
CHECKED	RGD

WB CHARLES J. MILLER ROAD BRIDGE		DATE: 7/23/12	
SHEET NO. S-30	F.A.U RTE.	SECTION	COUNTY
S-41 SHEETS	3860	09-00372-00-PW	McHENRY
		TOTAL SHEETS	SHEET NO.
		252	153
			CONTRACT NO. 63633
FED. ROAD DIST. NO. 1 ILLINOIS FED. AID PROJECT			

