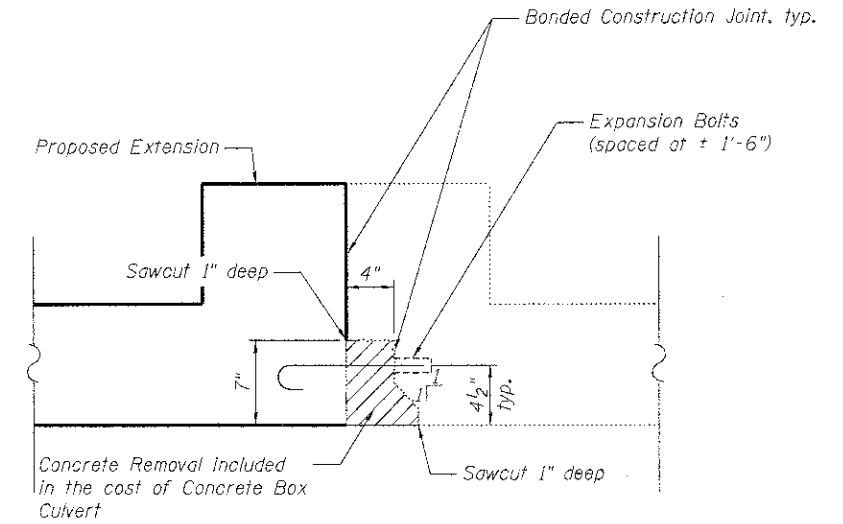


GENERAL NOTES

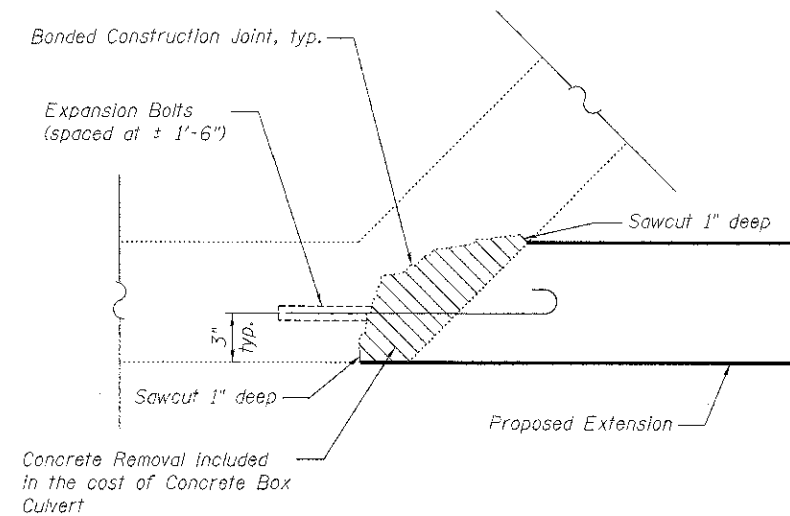
1. CONCRETE BOX CULVERTS shall be paid for as noted in Article 540.08, and The Contract Unit Price for CONCRETE BOX CULVERTS shall be in accordance with Section 540 and include all porous granular bedding material, cast in place wingwalls, headwalls, excavation, and backfill.
2. Contractor shall maintain stream flow in accordance with the Standard Specifications Article 502.
3. Diversion and Construction activities shall not be permitted to cause water levels upstream to rise above elevation = 739.00.
4. Reinforcement bars shall conform to the requirements of ASTM A 760 Gr 60.
5. Cover from the face of Concrete to Reinforcement bars shall be 3" from surfaces formed against earth and 2" for all other surfaces unless shown otherwise.
6. Plan dimensions and details relative to existing plans are subject to nominal construction variations. The Contractor shall field verify existing dimensions and details affecting new construction and make necessary approved adjustments prior to construction or ordering of materials. Such variations shall not be cause for additional compensation for a change in scope of the work, however, the Contractor will be paid for the quantity actually furnished at the unit price bid for the work.

TOTAL BILL OF MATERIAL

ITEM	UNIT	TOTAL
Stone Dumped Rip Rap, Class A3	Ton	3
Expansion Bolt, 3/4 inch	Each	16
Concrete Box Culverts	Cu. Yd.	14.0
Reinforcement Bars	Pound	2,720
Box Culverts to be Cleaned	Each	1



EXPANSION BOLT DETAIL
At existing upstream headwall



EXPANSION BOLT DETAIL
At existing wingwalls

GENERAL NOTES

DESIGNED	JPG
CHECKED	RGD
DRAWN	WJH
CHECKED	RGD



HRGreen.com
Illinois Professional Design Firm
184-001322

CHARLES J. MILLER ROAD BOX CULVERT			DATE: 7/23/12		
SHEET NO. SC-2	F.A.U. RTE. 3860	SECTION 09-00372-00-PW	COUNTY MCHENRY	TOTAL SHEETS 252	SHEET NO. 172
SC-3 SHEETS			CONTRACT NO. 63633		
FED. ROAD DIST. NO. 1 ILLINOIS FED. AID PROJECT					