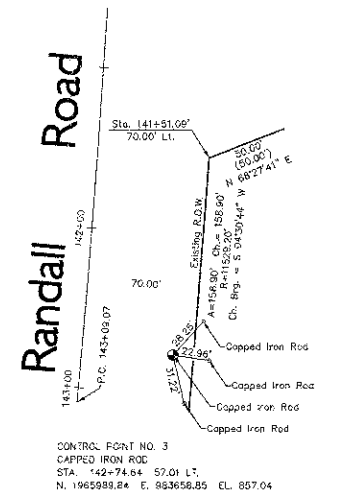


Bearings and Coordinates are referenced to the Illinois Coordinate System NAD 83 (2007) East Zone



CONTROL POINT NO. 3
 CAPPED IRON ROD
 STA. 142+57.00 LT.
 N. 1965988.84 E. 883658.85 EL. 857.04

STATION	OFFSET	NORTHING	EASTING
193+89.13	33.00 RT.	1966924.73	987572.92
193+59.13	33.00 LT.	1966960.52	982608.16
198+00.00	33.00 RT.	1966674.56	982937.13
198+00.00	45.00 RT.	1966654.41	982930.72
199+72.87	33.00 LT.	1966638.00	983118.52
199+72.87	50.00 LT.	1966652.37	983127.80
200+89.91	33.00 RT.	1966519.67	983382.21
200+89.91	40.00 RT.	1966513.75	983178.47
201+00.00	45.00 RT.	1966345.23	983379.84
203+50.00	75.00 RT.	1966348.73	983379.84
204+30.73	80.00 LT.	1966407.77	983514.66
204+81.91	40.00 RT.	1966304.35	983509.85
205+01.09	75.00 RT.	1966264.51	983507.25
207+00.55	70.00 LT.	1966280.53	983753.44
207+58.82	70.00 RT.	1966131.05	984727.92
138+39.17	70.00 RT.	1966432.23	983589.80
138+95.82	70.00 LT.	1966168.95	983626.97
139+08.20	85.00 LT.	1966156.87	983711.34
205+56.46	85.17 RT.	1966276.34	983548.74
205+73.49	120.08 RT.	1966186.66	983546.17
141+51.09	70.00 LT.	1966112.70	983581.38
143+09.07	70.00 RT.	1965968.22	983529.40

CONTROL POINT NO. 1
 STAINLESS STEEL ROD IN CONCRETE
 STA. 204+49.39 58.14 LT.
 N. 1966404.68 E. 883534.79 EL. 880.25

PARCEL NUMBER	OWNER	TOTAL HOLDINGS ACRES	PART TAKEN ACRES	REMAINDER AREA ACRES	EASEMENT AREA ACRES	PERMANENT INDEX NUMBER
XXXXXX	THE FINANCIAL CORPORATION OF ILLINOIS, A DELAWARE CORPORATION	71.400 (Tax Map)	0.349	71.051	N/A	06-04-100-007 06-04-300-021 06-31-400-033

GHA GEWALT HAMILTON ASSOCIATES, INC.
 850 Forest Edge Drive ■ Vernon Hills, IL 60061
 TEL 847.478.9700 ■ FAX 847.478.9701

ALIGNMENT, TIES & BENCHMARKS
 STATE OF ILLINOIS
 DEPARTMENT OF TRANSPORTATION
 F.A.P. 527 (BIG TIMBER ROAD)

SECTION 06-00269-00-SP KANE COUNTY
 PROJECT HSP-9003(GS) JOB NO. C-91-509-08
 STATION 198+34 TO STATION 207+96
 SCALE: 1"=60' SHEET 9 OF 67

BUREAU OF LAND ACQUISITION
 201 WEST CENTER COURT
 SCHAUMBURG, ILLINOIS 60196