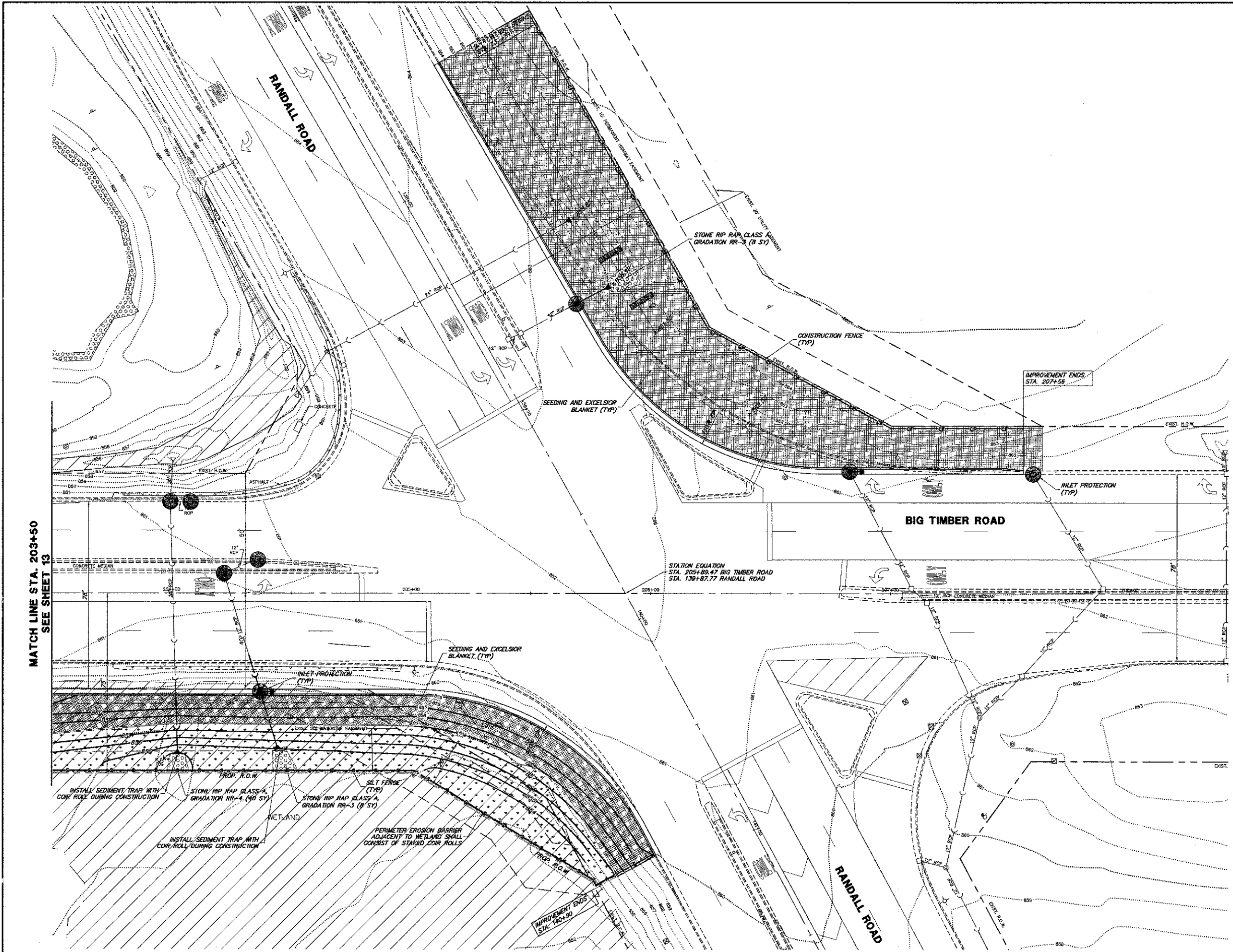


EROSION CONTROL LEGEND

- SEEDING CLASS 2A
EXCELSIOR BLANKET (NAG 75)
- SEEDING CLASS 4
EXCELSIOR BLANKET (NAG 75)
- STORM SEWER INLET PROTECTION
- INLET FILTER BASKET
- STONE RIP RAP
CLASS A
- PERIMETER EROSION BARRIER
- TEMPORARY CONSTRUCTION FENCE
- DITCH CHECK
- GEO-RIDGE
- SEDIMENT TRAP
WITH COIR ROLL

NOTES:
 TEMPORARY SEEDING SHALL BE INITIATED AFTER 7 DAYS IF AN AREA IS TO SIT IDLE FOR MORE THEN 14 DAYS. COST OF TEMPORARY EROSION CONTROL SEEDING SHALL BE CONSIDERED INCLUDED IN THE COST OF SEEDING CLASS 2A.
 DURING CONSTRUCTION CONTRACTOR SHALL CONSTRUCT AND MAINTAIN SEDIMENT TRAPS WITH COIR ROLLS AT EACH LOCATION SPECIFIED. UPON FINAL RESTORATION THE SEDIMENT TRAPS SHALL BE CLEANED OUT AND STONE RIP RAP AND FABRIC SHALL BE INSTALLED. COST OF SEDIMENT TRAPS SHALL BE INCLUDED IN THE COST OF STONE RIP RAP.



FILE NAME = 4459.000-PR3.dwg	USER NAME = GEORGE WHITEN	DESIGNED - KLB	REVISED -	STATE OF ILLINOIS DEPARTMENT OF TRANSPORTATION	SOIL EROSION AND SEDIMENT CONTROL PLANS BIG TIMBER ROAD STA. 203+50 TO STA. 208+50	F.A.P. RTE.	SECTION	COUNTY	TOTAL SHEETS	SHEET NO.		
PLOT SCALE = 1" = .0633'						SCALE 1"=20'	SHEET NO. OF SHEETS	STA.	TO STA.	ILLINOIS FED. AID PROJECT	CONTRACT #	63669
PLOT DATE = 3/21/2012						DATE	3/21/2012	REVISED	-	KANE	67	14
DRAWN - PJS						CHECKED	KLB	REVISED	-	SP	-	-