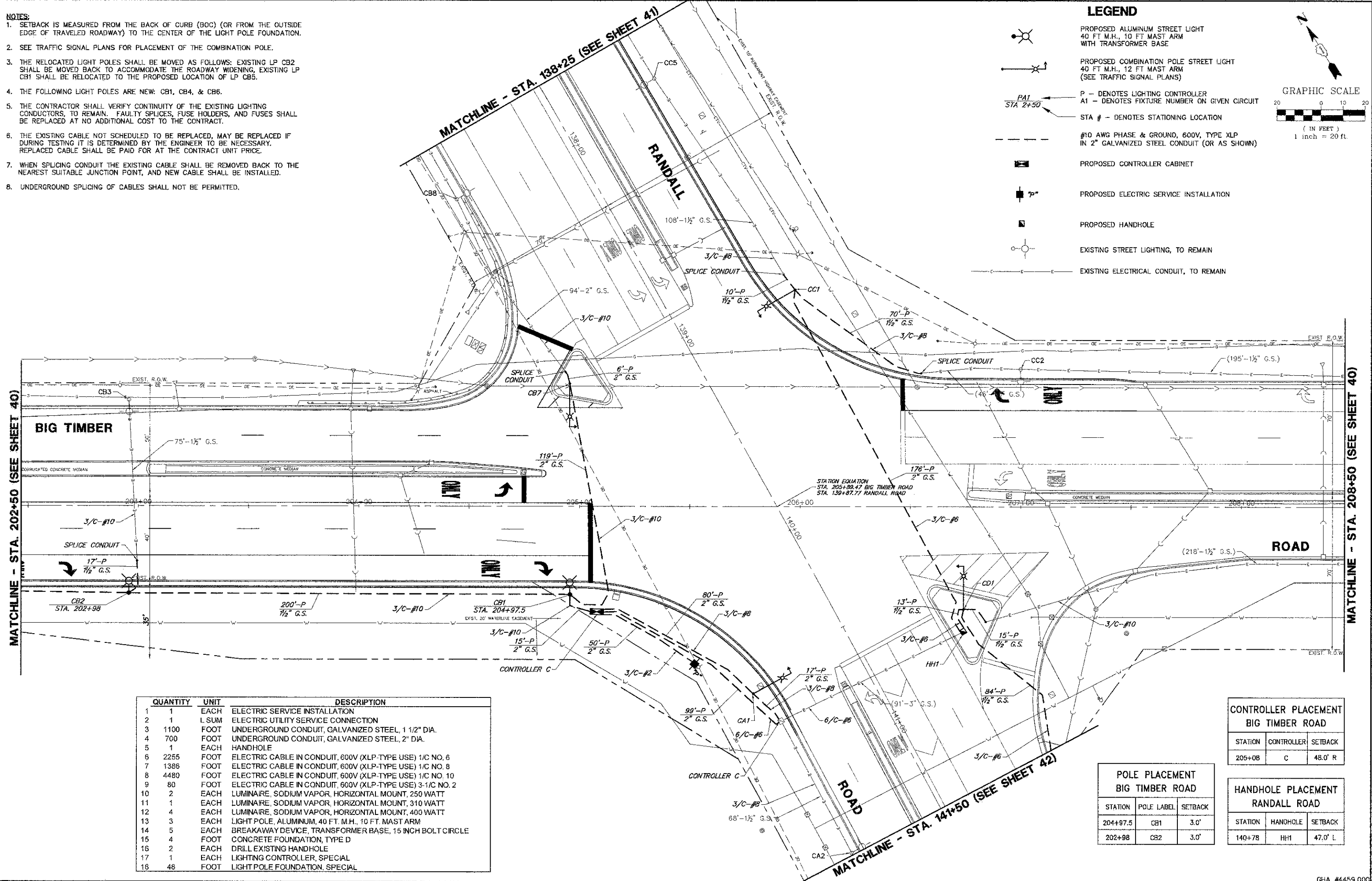
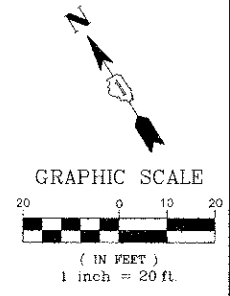


- NOTES:**
1. SETBACK IS MEASURED FROM THE BACK OF CURB (BOC) (OR FROM THE OUTSIDE EDGE OF TRAVELED ROADWAY) TO THE CENTER OF THE LIGHT POLE FOUNDATION.
 2. SEE TRAFFIC SIGNAL PLANS FOR PLACEMENT OF THE COMBINATION POLE.
 3. THE RELOCATED LIGHT POLES SHALL BE MOVED AS FOLLOWS: EXISTING LP CB2 SHALL BE MOVED BACK TO ACCOMMODATE THE ROADWAY WIDENING, EXISTING LP CB1 SHALL BE RELOCATED TO THE PROPOSED LOCATION OF LP CB5.
 4. THE FOLLOWING LIGHT POLES ARE NEW: CB1, CB4, & CB6.
 5. THE CONTRACTOR SHALL VERIFY CONTINUITY OF THE EXISTING LIGHTING CONDUCTORS, TO REMAIN. FAULTY SPLICES, FUSE HOLDERS, AND FUSES SHALL BE REPLACED AT NO ADDITIONAL COST TO THE CONTRACT.
 6. THE EXISTING CABLE NOT SCHEDULED TO BE REPLACED, MAY BE REPLACED IF DURING TESTING IT IS DETERMINED BY THE ENGINEER TO BE NECESSARY. REPLACED CABLE SHALL BE PAID FOR AT THE CONTRACT UNIT PRICE.
 7. WHEN SPLICING CONDUIT THE EXISTING CABLE SHALL BE REMOVED BACK TO THE NEAREST SUITABLE JUNCTION POINT, AND NEW CABLE SHALL BE INSTALLED.
 8. UNDERGROUND SPLICING OF CABLES SHALL NOT BE PERMITTED.

LEGEND

- PROPOSED ALUMINUM STREET LIGHT
40 FT M.H., 10 FT MAST ARM
WITH TRANSFORMER BASE
- PROPOSED COMBINATION POLE STREET LIGHT
40 FT M.H., 12 FT MAST ARM
(SEE TRAFFIC SIGNAL PLANS)
- P - DENOTES LIGHTING CONTROLLER
- A1 - DENOTES FIXTURE NUMBER ON GIVEN CIRCUIT
- STA # - DENOTES STATIONING LOCATION
- #10 AWG PHASE & GROUND, 600V, TYPE XLP
IN 2" GALVANIZED STEEL CONDUIT (OR AS SHOWN)
- PROPOSED CONTROLLER CABINET
- PROPOSED ELECTRIC SERVICE INSTALLATION
- PROPOSED HANDHOLE
- EXISTING STREET LIGHTING, TO REMAIN
- EXISTING ELECTRICAL CONDUIT, TO REMAIN



QUANTITY	UNIT	DESCRIPTION
1	1	ELECTRIC SERVICE INSTALLATION
2	1	L.SUM. ELECTRIC UTILITY SERVICE CONNECTION
3	1100	FOOT UNDERGROUND CONDUIT, GALVANIZED STEEL, 1 1/2" DIA.
4	700	FOOT UNDERGROUND CONDUIT, GALVANIZED STEEL, 2" DIA.
5	1	EACH HANDHOLE
6	2255	FOOT ELECTRIC CABLE IN CONDUIT, 600V (XLP-TYPE USE) 1/C NO. 6
7	1386	FOOT ELECTRIC CABLE IN CONDUIT, 600V (XLP-TYPE USE) 1/C NO. 8
8	4480	FOOT ELECTRIC CABLE IN CONDUIT, 600V (XLP-TYPE USE) 1/C NO. 10
9	80	FOOT ELECTRIC CABLE IN CONDUIT, 600V (XLP-TYPE USE) 3-1/C NO. 2
10	2	EACH LUMINAIRE, SODIUM VAPOR, HORIZONTAL MOUNT, 250 WATT
11	1	EACH LUMINAIRE, SODIUM VAPOR, HORIZONTAL MOUNT, 310 WATT
12	4	EACH LUMINAIRE, SODIUM VAPOR, HORIZONTAL MOUNT, 400 WATT
13	3	EACH LIGHT POLE, ALUMINUM, 40 FT. M.H., 10 FT. MAST ARM
14	5	EACH BREAKAWAY DEVICE, TRANSFORMER BASE, 15 INCH BOLT CIRCLE
15	4	FOOT CONCRETE FOUNDATION, TYPE D
16	2	EACH DRILL EXISTING HANDHOLE
17	1	EACH LIGHTING CONTROLLER, SPECIAL
18	48	FOOT LIGHT POLE FOUNDATION, SPECIAL

**CONTROLLER PLACEMENT
BIG TIMBER ROAD**

STATION	CONTROLLER	SETBACK
205+08	C	48.0' R

**POLE PLACEMENT
BIG TIMBER ROAD**

STATION	POLE LABEL	SETBACK
204+97.5	CB1	3.0'
202+98	CB2	3.0'

**HANDHOLE PLACEMENT
RANDALL ROAD**

STATION	HANDHOLE	SETBACK
140+78	HH1	47.0' L

FILE NAME = 4459.000-E.2.dwg	USER NAME = ZACH WALLSTEN	DESIGNED - JZ	REVISED -	STATE OF ILLINOIS DEPARTMENT OF TRANSPORTATION	PERMANENT LIGHTING MODERNIZATION PLAN BIG TIMBER ROAD (CH 21) AT RANDALL ROAD (CH 34)	F.A.P. RTE. 527	SECTION 08-00369-00-SP	COUNTY KANE	TOTAL SHEETS 67	SHEET NO. 39		
PLOT SCALE = 1" = .0833'	CHECKED - AJP	DRAWN - ZCW	REVISED -			SCALE: 1"=20'	SHEET NO. OF SHEETS	STA. TO STA.	CONTRACT #: 63669			
PLOT DATE = 3/21/2012	DATE = 3/21/2012	REVISOR -	REVISOR -			GHA #4459.000 ILLINOIS FED. AID PROJECT						