

1 WIRING DIAGRAM
NO SCALE

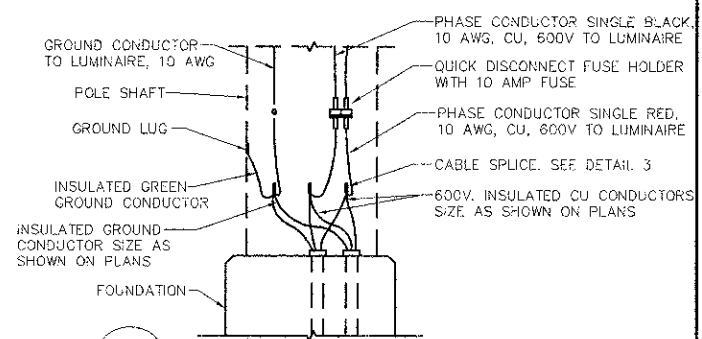
LOAD TABULATION AND VOLTAGE DROP FOR LIGHTING CONTROLLER "C"

CIRCUIT	WATTS	AMPS @ 240V	VOLTAGE DROP AT LAST POLE
A	1910	8.0	2.6% (A5)
B	3070	12.8	2.5% (B5)
C	2460	10.3	2.8% (C7)
D	2520	10.5	2.9% (D7)
TOTAL:	9960	41.5	

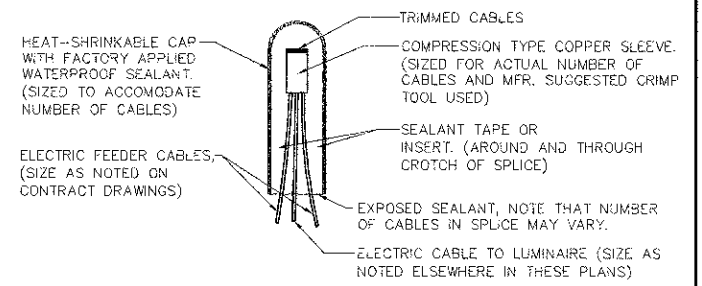
MAX ALLOWABLE @ BALLAST IS 5% VOLTS DROP

LEGEND

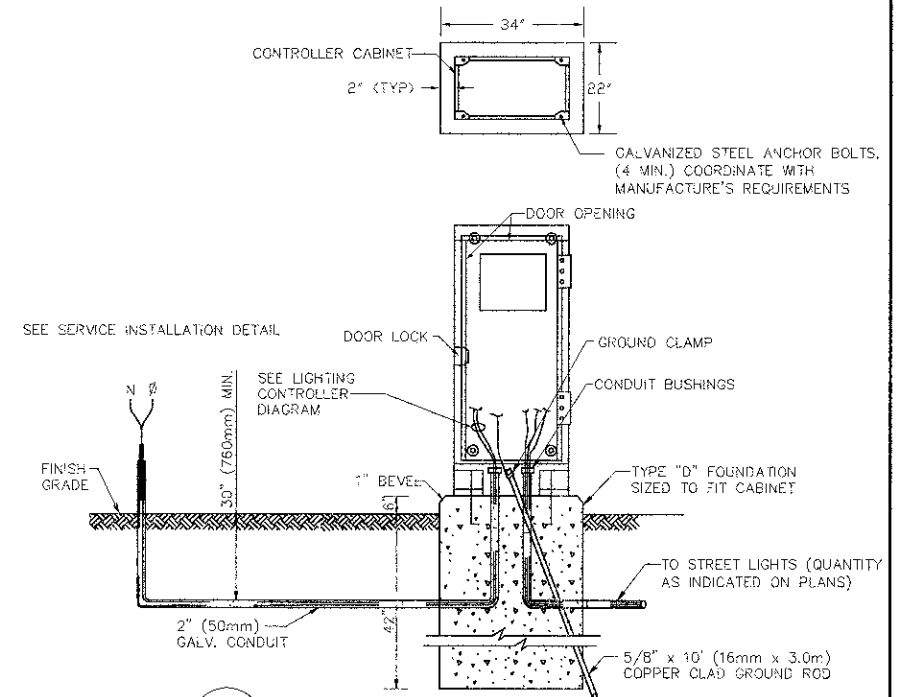
- EXISTING STREET LIGHT POLE
250W HPS LUMINAIRE
40' POLE, 10' ARM
240V, 1 PHASE, 2 WIRE
- EXISTING STREET LIGHT POLE
310W HPS LUMINAIRE
40' POLE, 10' ARM
240V, 1 PHASE, 2 WIRE
- EXISTING HANDHOLE
- PROPOSED LIGHTING FIXTURE
- DENOTES LUMINAIRE TYPE
(REFER TO LIGHTING SCHEDULE SHEET 59)
- POLE MOUNTED LUMINAIRE
- 2#6 AWG & 1#6 AWG GROUND, 600V. (TYPE XLP-RHW)
- 4#6 AWG & 2#6 AWG GROUND, 600V. (TYPE XLP-RHW)
- 2#8 AWG & 1#8 AWG GROUND, 600V. (TYPE XLP-RHW)
- 2#10 AWG & 1#10 AWG GROUND, 600V. (TYPE XLP-RHW)
- 4#10 AWG & 2#10 AWG GROUND, 600V. (TYPE XLP-RHW)
- POLE LABEL
- DENOTES POLE NO. ON GIVEN CIRCUIT
- LETTER - DENOTES CIRCUIT DESIGNATION
- DENOTES LIGHTING CONTROLLER
- PROPOSED LIGHTING CONTROLLER
- PROPOSED HANDHOLE
- PROPOSED 100A/2P, 240/120 VOLT, SINGLE PHASE COMED SERVICE. 3/C #2 IN 2" RIGID GALVANIZED STEEL CONDUIT.



2 POLE BASE WIRING DIAGRAM
NO SCALE



3 SPLICING ELECTRIC CABLES
BASIC MATERIALS AND METHODS
NO SCALE



4 LIGHTING CONTROLLER FOUNDATION DIAGRAM
NO SCALE

NOTES:
A 48"X48"X4" RCC WORK PAD SHALL BE PROVIDED IN FRONT OF CONTROLLER CABINET, UNLESS CABINET IS POSITIONED ADJACENT TO SIDEWALK.
REFER TO CONTROLLER DETAIL FOR LIGHTING CONTROLLER SPECIFICATIONS.